



# Hydraulic Wet Kits & Equipment



**Tel: 01262 601600**

[www.mwhydraulics.co.uk](http://www.mwhydraulics.co.uk) | [sales@mwtruckparts.co.uk](mailto:sales@mwtruckparts.co.uk)

## About us

**M W Hydraulics, our sub brand operating within M W Truck Parts, offer complete hydraulic wet kits and individual hydraulic parts such as:**

hydraulic pumps, hydraulic PTO's, hydraulic tanks, hydraulic valves and PTO switches, hydraulic lever blocks and more. A standard hydraulic wet kit will typically consist of the hydraulic tank, including fixtures and valves, the hydraulic PTO and the hydraulic pump.

To ensure that we supply high quality products to our customers, M W Hydraulics only works with manufacturers that are certified by QA Technic ISO 9001 (2015) for their quality management systems. QA Technic standards are on an

international level of directives and are endorsed by leading safety marks.



We supply hydraulic parts and components for most makes and models of commercial vehicles, specifically Large Goods Vehicles (LGV's) and Heavy Goods Vehicles (HGV's). Our products are compatible with many truck makes such as Volvo, Mercedes-Benz, Scania MAN, DAF, Renault and more.

Complete wet kits are available to buy as well as individual hydraulic components and parts such as: Hydraulic tanks, PTO's (power take offs) and Hydraulic Pumps etc. and all come with a six (6) month free warranty exchange on faulty goods.

For quotations or information on availability of hydraulic equipment to suit your vehicle, please contact our sales team by any of the methods outlined in this catalogue.



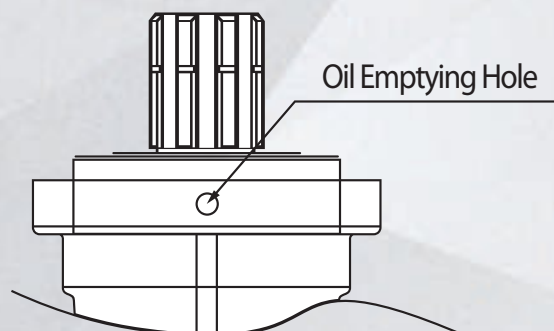
# INDEX

<a href="#">BENT AXIS PISTON PUMPS</a>	<a href="#">06</a>
<a href="#">PISTON PUMPS</a>	<a href="#">10</a>
<a href="#">GEAR PUMPS</a>	<a href="#">16</a>
<a href="#">PTO's</a>	<a href="#">26</a>
<a href="#">CONTROL VALVES</a>	<a href="#">77</a>
<a href="#">PNEUMATIC CONTROLS</a>	<a href="#">82</a>
<a href="#">OIL TANKS</a>	<a href="#">87</a>

# PUMP SELECTION AND MOUNTING INSTRUCTIONS

## PUMP SELECTION

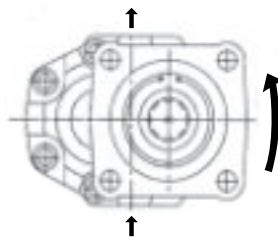
1. Select a pump model which has the performance values such as pressure and flow adequate to its purpose.
2. Determine the adequate connection flange type e.g. UNI, ISO, and Shaft etc.
3. Choose the pump rotation according to the rotation of the actuating components such as the PTO or electric motor.
4. While mounting your pump to the actuating components such as the PTO or electric motor the nuts should be tightened and balanced correctly and the hoses should be flexible.
5. Pull out the plastic plugs in the oil inlet and outlet holes after mounting the pump and then mount the fittings immediately.
6. Check the cleanliness of the oil tank and oil filters.
7. Check that the whole system is filled with oil until the pump inlet and all the valves are open; **do not run the pump without oil even for a few seconds.**
8. The first operation of the pump should only be for a few minutes at low pressure to check whether the pump is working normally. Check the noise level and also if any oil leaks are present, if abnormal conditions are observed, stop the system immediately and check for faults.
9. The oil emptying hole shown on the figure below is designed to detect leaks in the oil seals. The operator should check the oil emptying hole frequently.
10. During the first operation, the system will fill with oil and so the oil tank level should be checked and additional oil should be added as required.
11. The ideal oil temperature is between 50–60c and the pump can run between 0–80c.
12. Do not exceed maximum performance design values stated in our catalogue.
13. Do not change valve pressure while the system is in use.
14. Do not neglect periodic system checks even if everything appears to be running normally e.g. oil quality, filter cleanliness, visual inspections etc.



## PUMP ROTATION



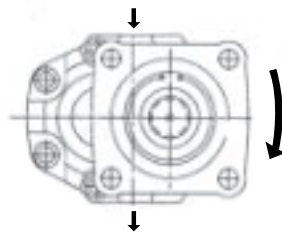
Your pump must be LEFT rotating  
if the PTO shaft is RIGHT rotating



Anti-clock rotation (LEFT)



Your pump must be RIGHT rotating  
if the PTO shaft is LEFT rotating

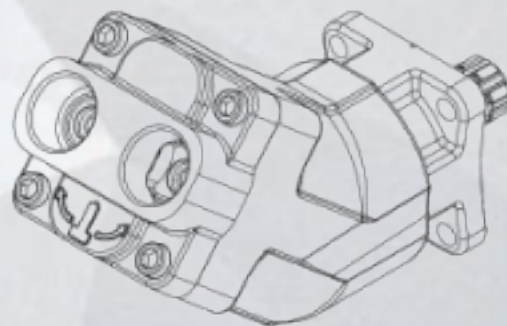
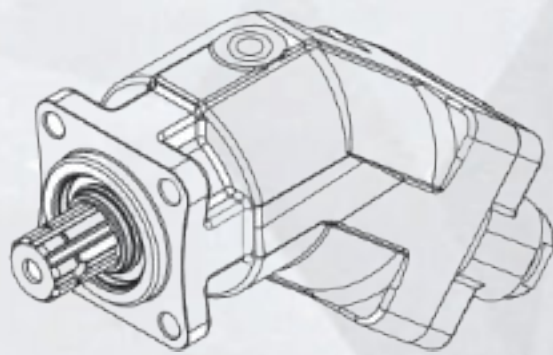


Clockwise rotation (RIGHT)

**Special notes:** Your pump's life will be shorter without filters in your system and we recommend you to use SAE 10 W type oil in winters and SAE 20 W in summers.



# BENT AXIS PUMPS



# CONTENTS

[35 LT BENT AXIS PISTON PUMP](#)

[09](#)

[45 LT BENT AXIS PISTON PUMP](#)

[09](#)

[65 LT BENT AXIS PISTON PUMP](#)

[09](#)

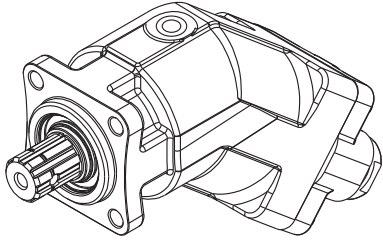
[85 LT BENT AXIS PISTON PUMP](#)

[09](#)

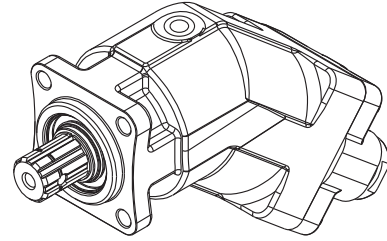
[105 LT BENT AXIS PISTON PUMP](#)

[09](#)

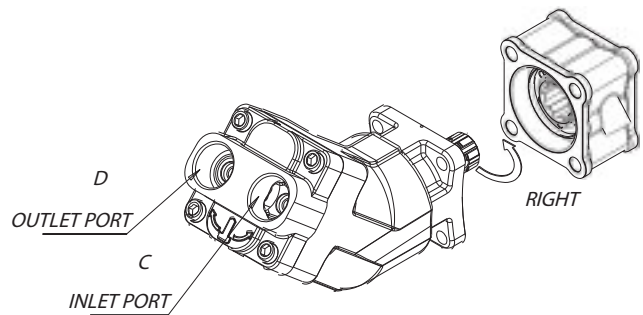
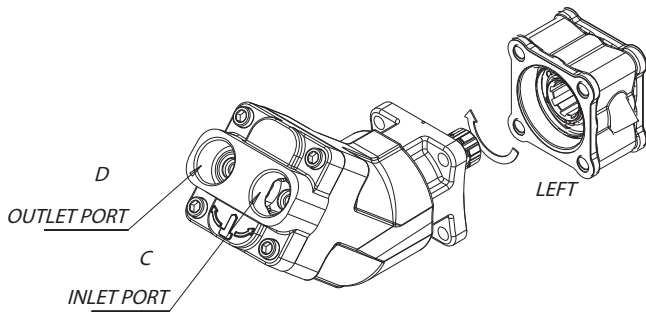




CHANGING OF THE PUMP DIRECTION



CHANGING OF THE PUMP DIRECTION



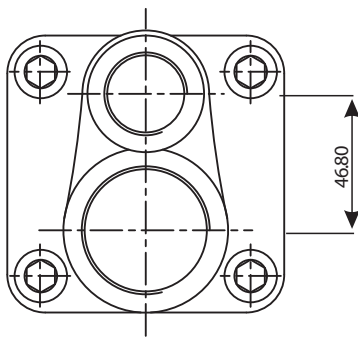
1. In the event the inlet port is open and the pump takes in air, the pump will run at 0.8BAR pressure and this will result in a 3% reduction of oil flow.

2. Please be sure to set the direction of the pump to the required position before installation.

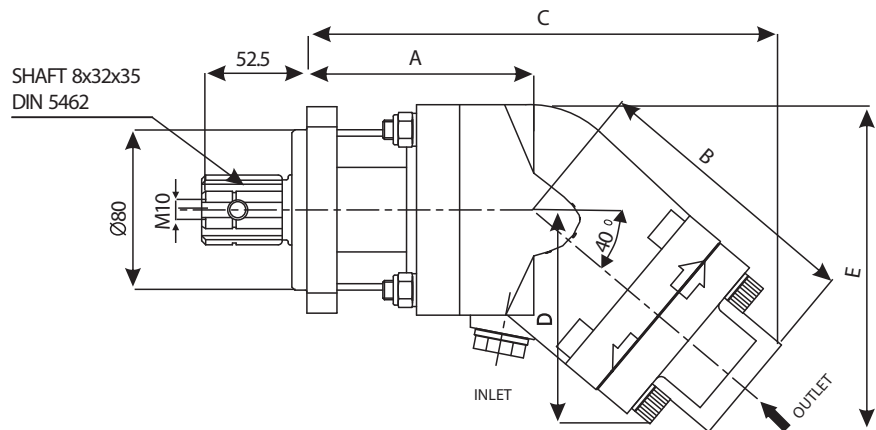
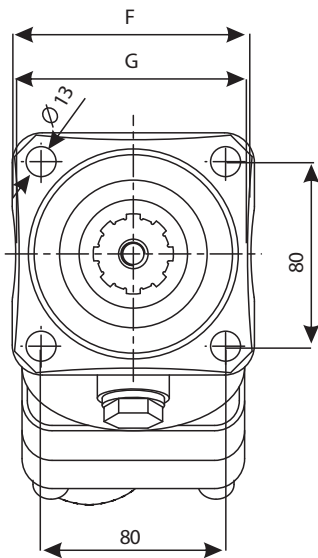




## BENT AXIS PISTON PUMPS



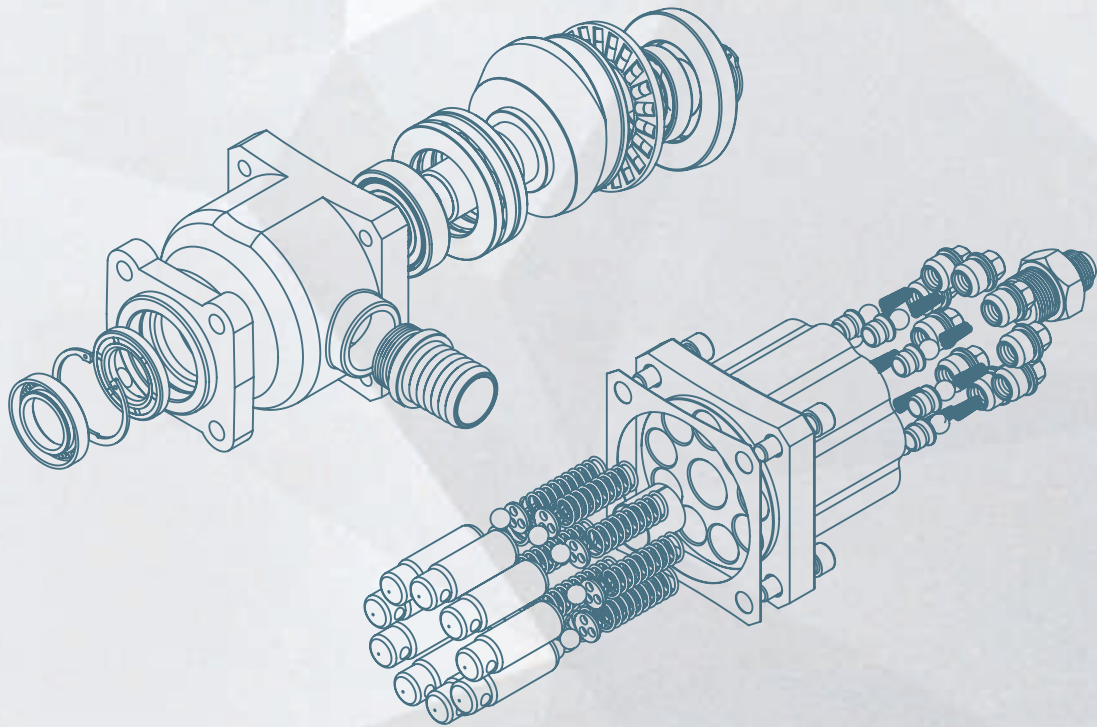
A VIEW



SKU	DISPLACEMENT	WORKING PRESSURE	MAX PRESSURE	MAX SPEED	INLET	OUTLET	WEIGHT
16220350366 CW 16220350399 CCW	35 LT / 1000 RPM	390 BAR	440 BAR	2100	R1" 1/4	3/4"	14 KG.
16220450366 CW 16220450399 CCW	45 LT / 1000 RPM	390 BAR	440 BAR	2000	R1" 1/4	3/4"	14 KG.
HYPUM-T-016 CW HYPUM-T-015 CCW	65 LT / 1000 RPM	350 BAR	440 BAR	2000	R1" 1/4	R1"	16 KG.
HYPUM-T-014 CW HYPUM-T-013 CCW	85 LT / 1000 RPM	300 BAR	350 BAR	1900	R1" 1/2	R1"	18 KG.
HYPUM-T-010 CW HYPUM-T-012 CCW	105 LT / 1000 RPM	300 BAR	350 BAR	1700	R1" 1/2	R1"	20 KG.



# PISTON PUMPS



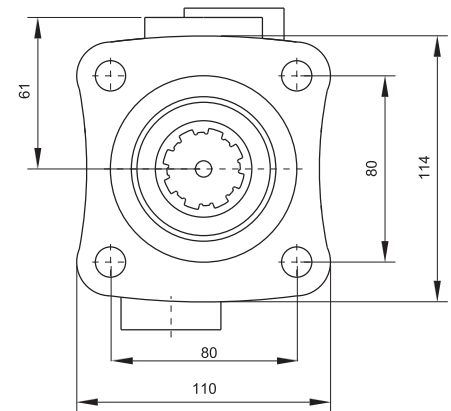
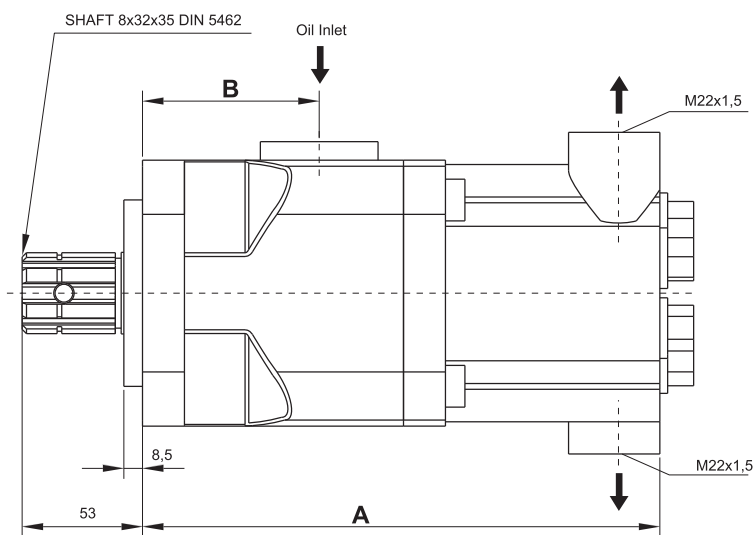
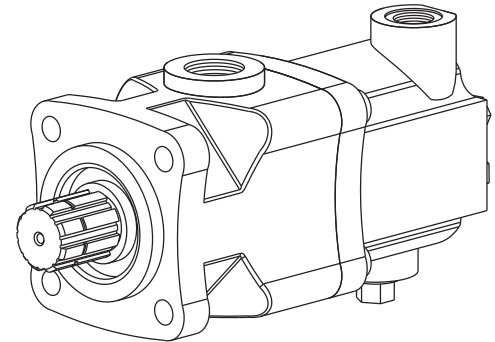
# CONTENTS

<a href="#"><u>60 LT 6 PISTON PUMP</u></a>	<a href="#"><u>12</u></a>
<a href="#"><u>60 LT 6 PISTON PUMP HIGH PRESSURE</u></a>	<a href="#"><u>13</u></a>
<a href="#"><u>85 LT - 105 LT 9 PISTON PUMP</u></a>	<a href="#"><u>14</u></a>
<a href="#"><u>85 LT - 105 LT 9 PISTON PUMP HIGH PRESSURE</u></a>	<a href="#"><u>15</u></a>



## 6 PISTON PUMP 60 LT

PART NO. 16110600369 CW-CCW



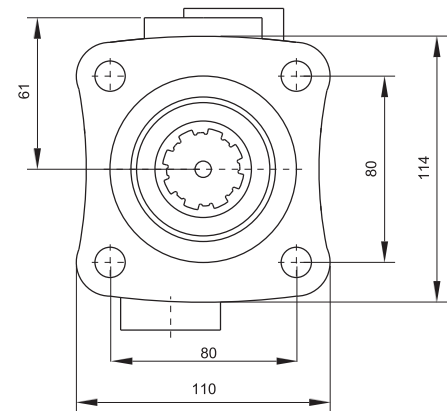
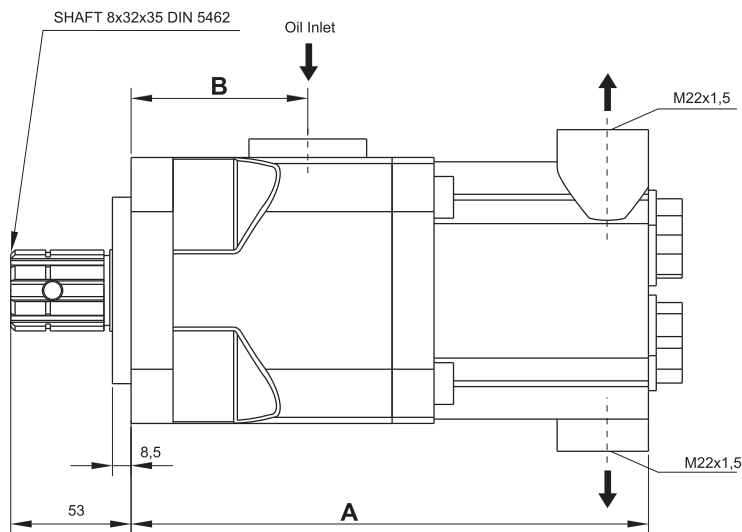
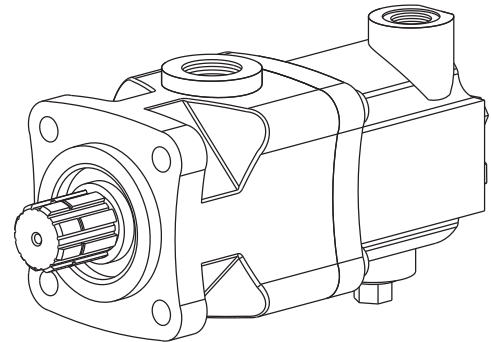
### GENERAL DATA

PART NO.	DISPLACEMENT	WORKING PRESSURE	MAX PRESSURE	MAX SPEED	A / B mm / mm	INLET	OUTLET	WEIGHT KG
16110600369	60 LT / 1000 RPM	200 BAR	300 BAR	1500	221 / 75	R1" 1/4	M22X1.5	14 KG

# PISTON PUMPS

## 6 PISTON PUMP HIGH PRESSURE 60 LT

SKU: HYPUM-T-019 CW - CCW



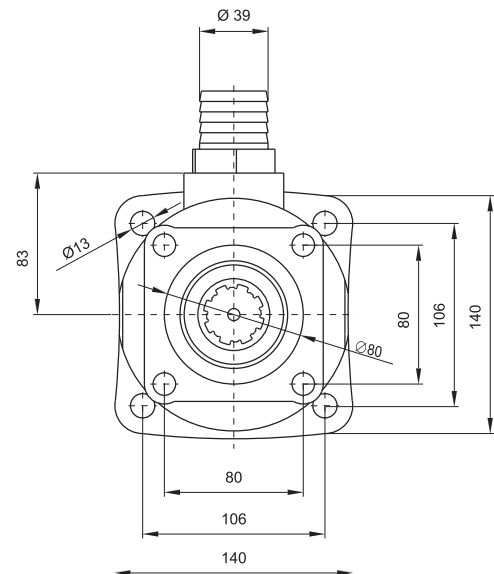
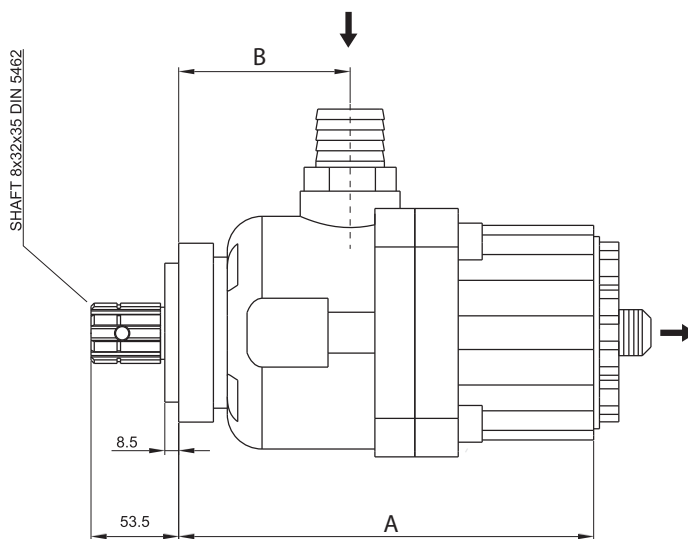
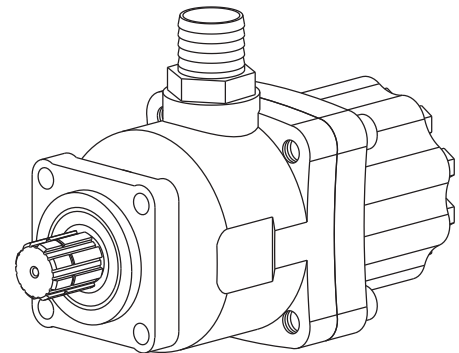
### GENERAL DATA

PART NO.	DISPLACEMENT	WORKING PRESSURE	MAX PRESSURE	MAX SPEED	A / B mm / mm	INLET	OUTLET	WEIGHT KG
HYPUM-T-019	60 LT / 1000 RPM	300 BAR	350 BAR	1500	221 / 75	R1" 1/4	M22x1.5	14.5 KG

## 9 PISTON PUMP 85 LT - 105

85 LT / PART NO. 16120851369 CW - CCW

105 LT / PART NO. 16121051369 CW - CCW



### GENERAL DATA

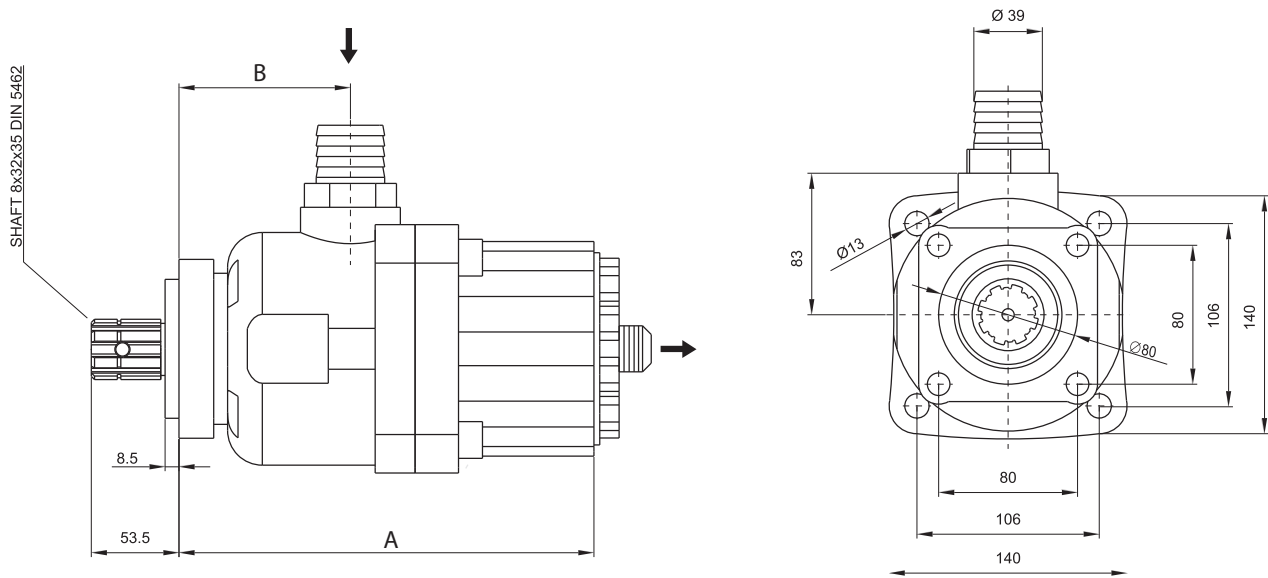
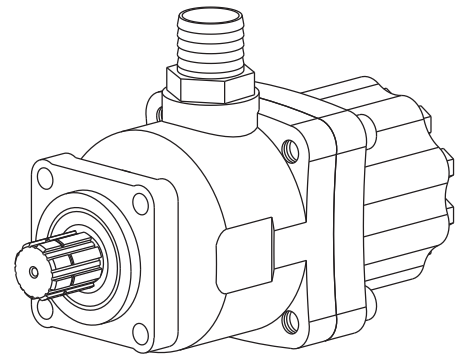
PART NO.	DISPLACEMENT	WORKING PRESSURE	MAX PRESSURE	MAX SPEED	A / B mm / mm	INLET	OUTLET	WEIGHT KG
16120851369	85 LT / 1000 RPM	200 BAR	300 BAR	1300	240 / 100	R1" 1/4	R1"	18 KG
16121051369	105 LT / 1000 RPM	200 BAR	300 BAR	1300	240 / 100	R1" 1/4	R1"	18 KG

# PISTON PUMPS

## 9 PISTON HIGH PRESSURE PUMP 85 LT - 105

85 LT / PART NO: HYPUM-T-018 CW - CCW

105 LT / SKU: HYPUM-T-017 CW - CCW

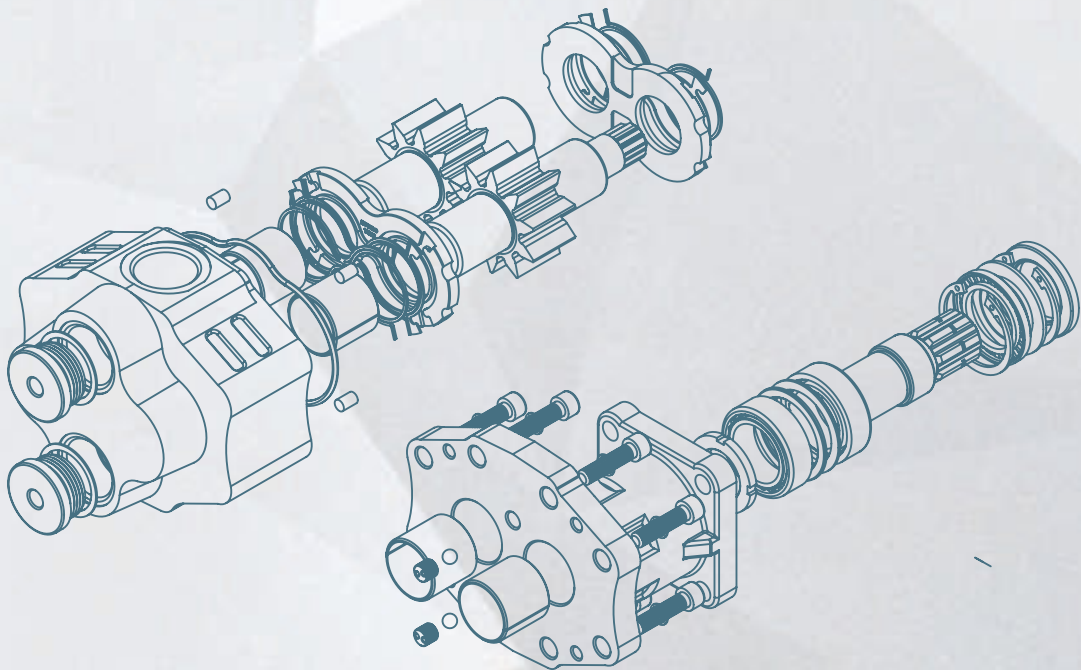


### GENERAL DATA

PART NO.	DISPLACEMENT	WORKING PRESSURE	MAX PRESSURE	MAX SPEED	A / B mm / mm	INLET	OUTLET	WEIGHT KG
HYPUM-T-018	85 LT/1000 RPM	250 BAR	350 BAR	1300	240 / 100	R1" 1/4	R1"	19 KG
HYPUM-T-017	105 LT/1000 RPM	250 BAR	350 BAR	1300	240 / 100			



# GEAR PUMPS





# CONTENTS

<a href="#">17 LT GEAR PUMP</a>	<a href="#">19</a>
<a href="#">27 LT GEAR PUMP</a>	<a href="#">20</a>
<a href="#">34 LT GEAR PUMP</a>	<a href="#">21</a>
<a href="#">43 LT GEAR PUMP</a>	<a href="#">22</a>
<a href="#">51 LT GEAR PUMP</a>	<a href="#">23</a>
<a href="#">61 LT GEAR PUMP</a>	<a href="#">24</a>
<a href="#">82 LT GEAR PUMP</a>	<a href="#">25</a>



Start by removing the cover of the pump from the main body of the pump as shown in diagram 1 below:

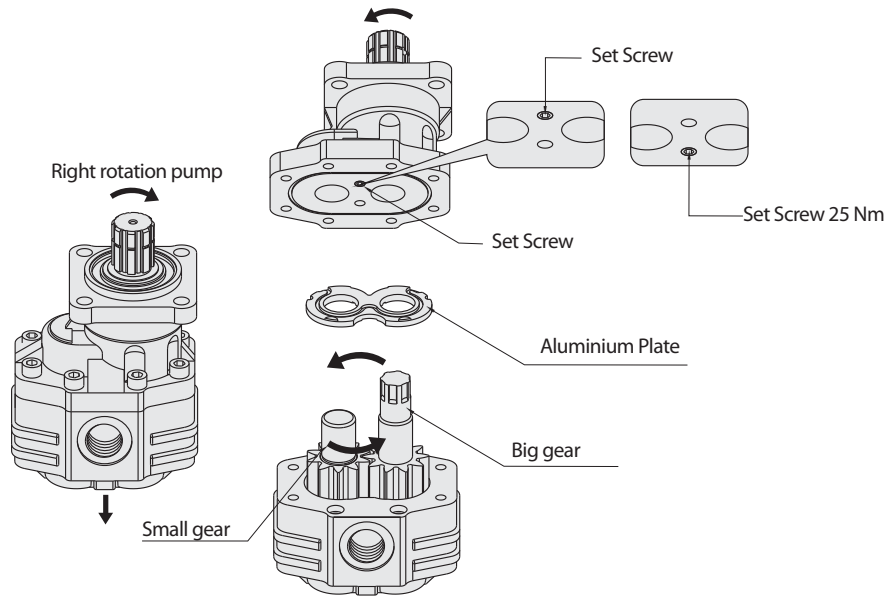
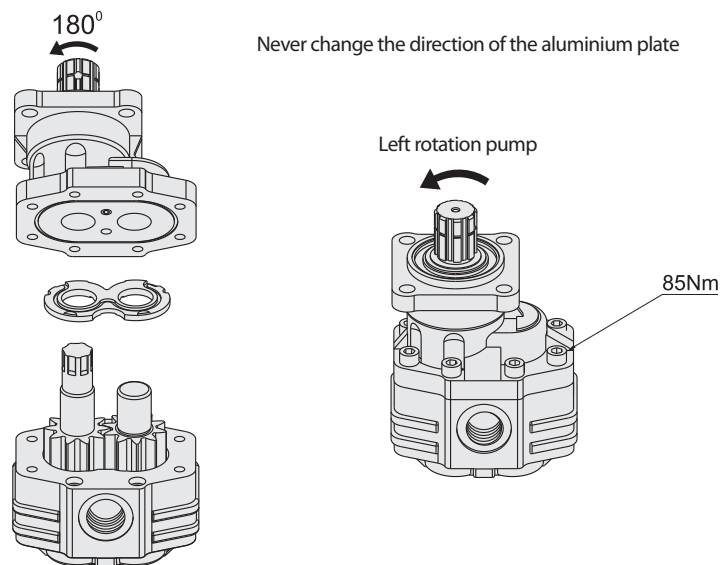


Diagram 1

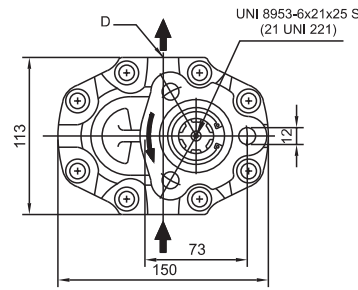
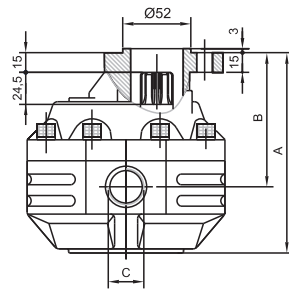
1. Remove the set screw you see on the underside of the cover and place it in the hole opposite.
2. Then you will need to remove the aluminium plate and swap positions of the small and big gears and place the aluminium plate back into position.
3. Reattach the cover to the main body of the pump but in the opposite position from how it was taken off to accommodate the rotation change.



Note: The O-ring on the cover surface has to be greased in order to prevent it from moving during the pump re-assembly.

# GEAR PUMPS

**17 LT / 1000 RPM**

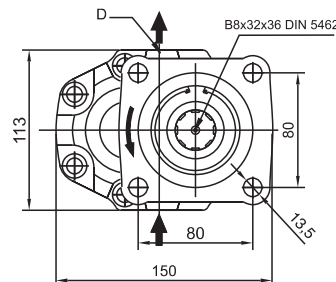
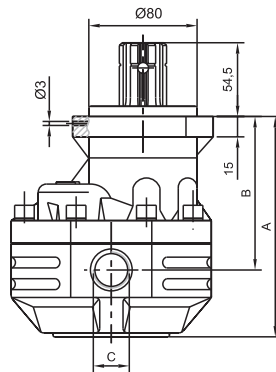


**UNI T1 part no.**

16300170166 CW

16300170199 CCW

16300170169 CW - CCW



**ISO part no.**

16300170366 CW

16300170399 CCW

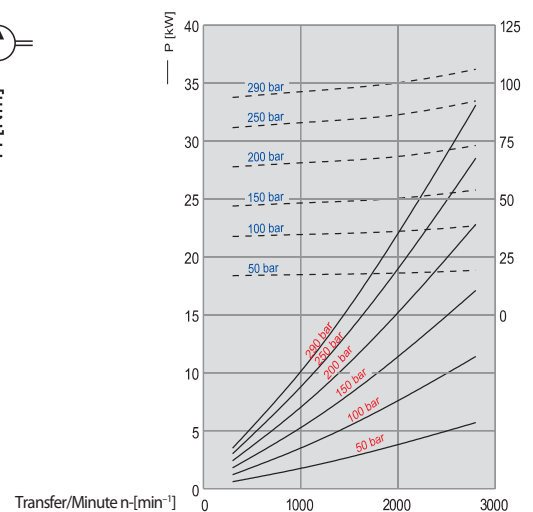
16300170369 CW - CCW

## GENERAL DATA

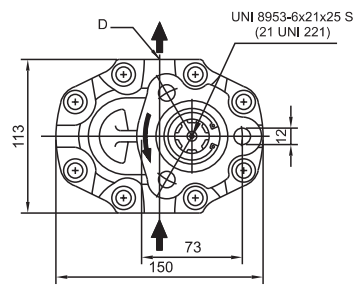
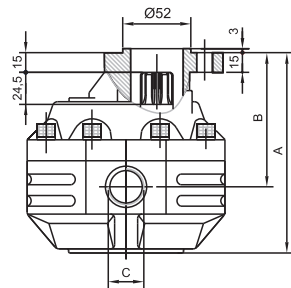
30 - 17	UNI T-1	ISO
A (mm)	151.5	163.5
B (mm)	102	114
Weight	8.5 KG	10.5
C (Oil Inlet)	G 1/2"	
D (Oil Outlet)	G 1/2"	
Max. Cont. Pres.	230 BAR	
Max. Peak Pressure	250 BAR	
Displacement Value	Mineral oil based hydraulic fluids to ISO/DIN and fire resistant fluids	



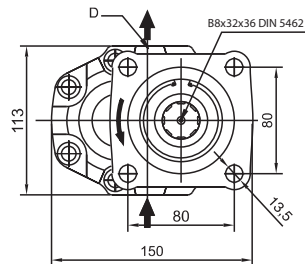
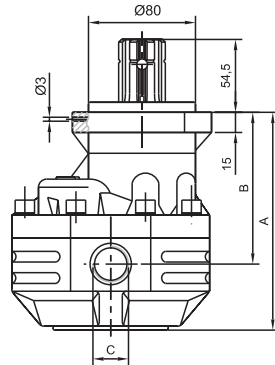
M [Nm]



## 27 LT / 1000 RPM



**UNI T1 SKU:**  
**HYPUM-T-021 CW - CCW**



**ISO SKU:**  
**HYPUM-T-020 CW - CCW**

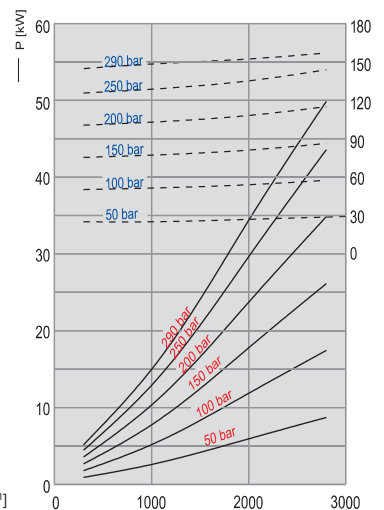
### GENERAL DATA

30 - 27	UNI T-1	ISO
A (mm)	151.5	163.5
B (mm)	102	114
Weight	9	10.5
C - Oil Inlet		3/4"
D - Oil Outlet		3/4"
Max. Cont. Pres.		230 BAR
Max. Peak Pressure		250 BAR
Displacement Value	Mineral oil based hydraulic fluids to ISO/DIN and fire resistant fluids	



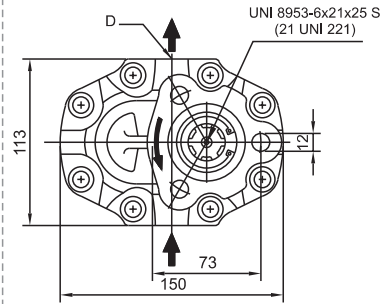
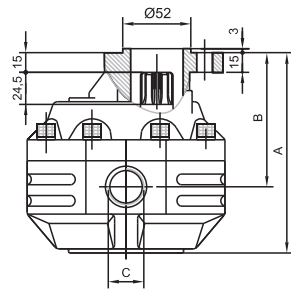
M [Nm]

Transfer/Minute n-[min<sup>-1</sup>]

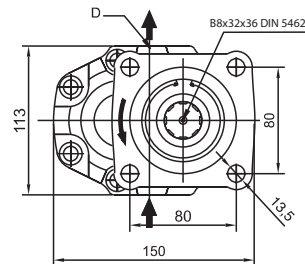
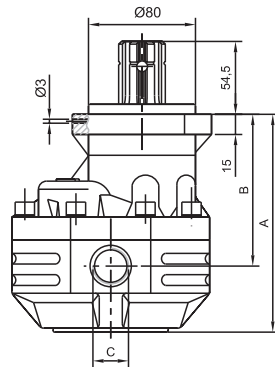


# GEAR PUMPS

**34 LT / 1000 RPM**



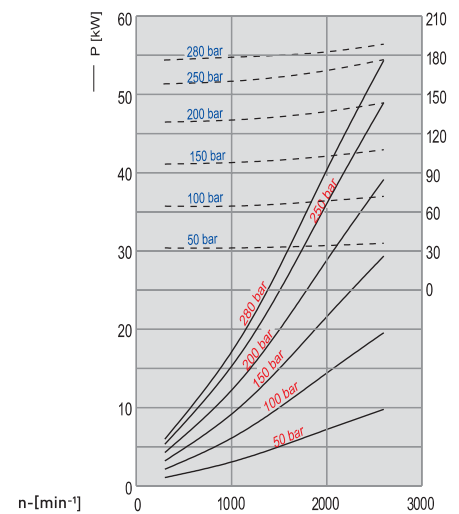
**UNI T1 SKU:**  
**HYPUM-T-022 CW - CCW**



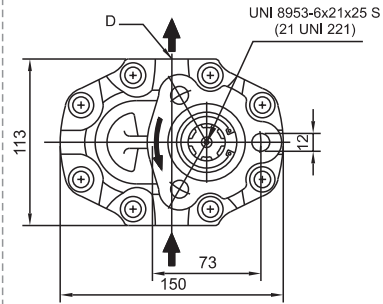
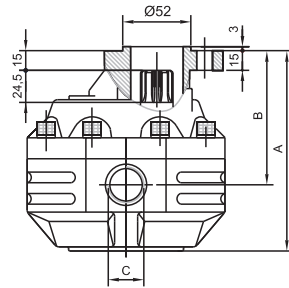
**ISO SKU:**  
**HYPUM-T-023 CW CCW**

## GENERAL DATA

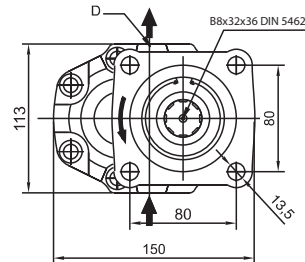
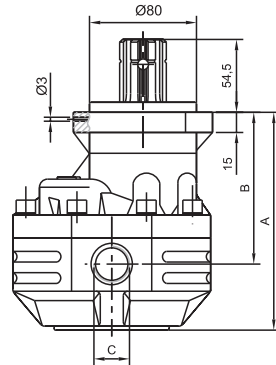
30-34	UNI T-1	ISO
A (mm)	162.5	174.5
B (mm)	107.5	119.5
Weight	9.5	11.5
C (Oil Inlet)		3/4"
D (Oil Outlet)		3/4"
Max. Cont. Pressure		230 BAR
Max. Peak Pressure		250 BAR
Displacement Value	Mineral oil based hydraulic fluids to ISO/DIN and fire resistant fluids	



## 43 LT / 1000 RPM



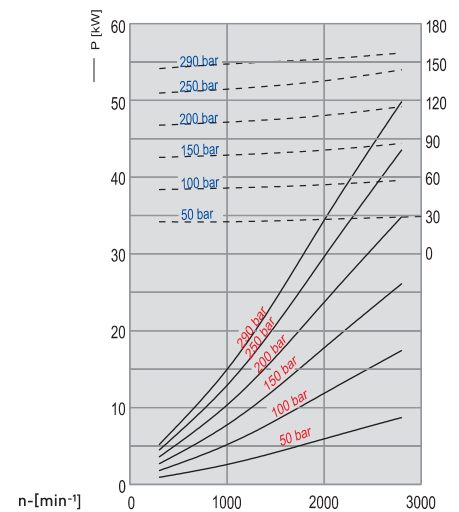
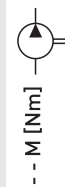
**UNI T1 SKU:**  
HYPUM-T-024 CW - CCW



**ISO SKU:**  
HYPUM-T-025 CW CCW

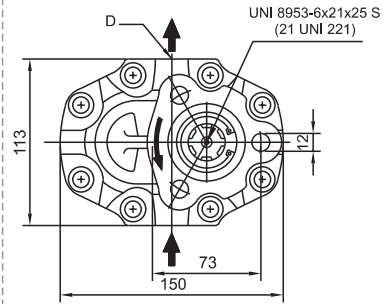
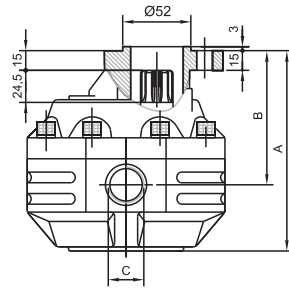
### GENERAL DATA

30 - 43	UNI T-1	ISO
A (mm)	170.5	182.5
B (mm)	111	123
Weight	10	12
C (Oil Inlet)	R1"	
D (Oil Outlet)	R1"	
Max. Cont. Pressure	220 BAR	
Max. Peak Pressure	240 BAR	
Displacement Value	Mineral oil based hydraulic fluids to ISO/DIN and fire resistant fluids	



# GEAR PUMPS

**51 LT / 1000 RPM**

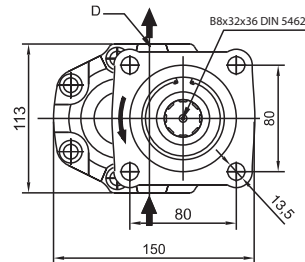
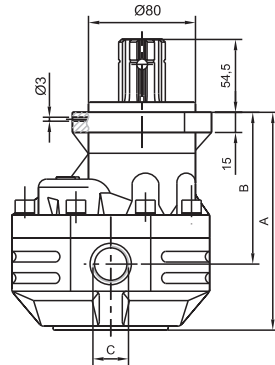


**UNI T1 PART NO.**

16300510166 CW

16300510199 CCW

16300510169 CW - CCW



**ISO PART NO.**

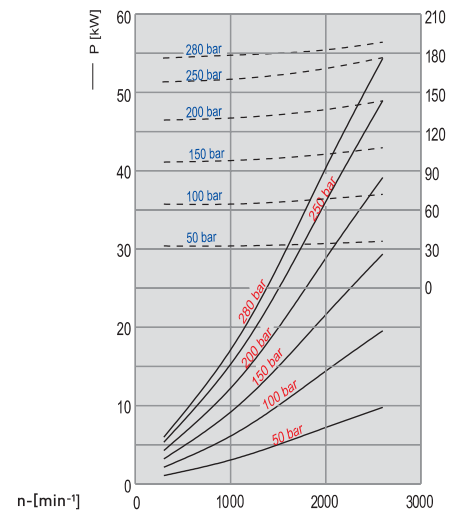
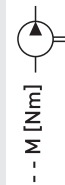
16300510366 CW

16300510399 CCW

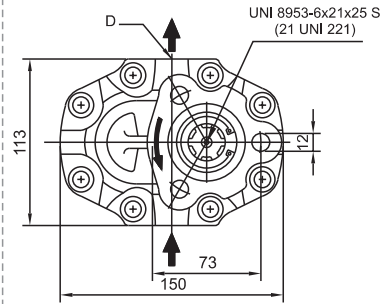
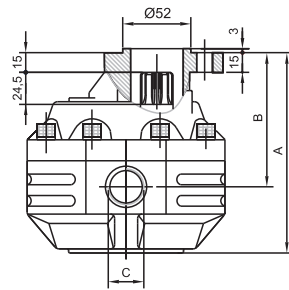
16300510369 CW CCW

## GENERAL DATA

30 - 51	UNI T-1	ISO
A (mm)	175.5	187.5
B (mm)	112.5	124.5
Weight	10.5	12.5
C (Oil Inlet)	R1"	
D (Oil Outlet)	R1"	
Max. Cont. Pressure	220 BAR	
Max. Peak Pressure	240 BAR	
Displacement Value	Mineral oil based hydraulic fluids to ISO/DIN and fire resistant fluids	



## 61 LT / 1000 RPM

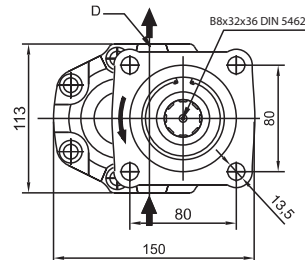
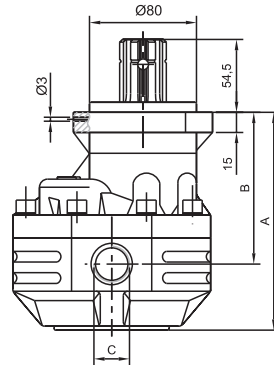


### UNI T1 PART NO.

16300610166 CW

16300610199 CCW

16300610169 CW - CCW



### ISO PART NO.

16300610366 CW

16300610399 CCW

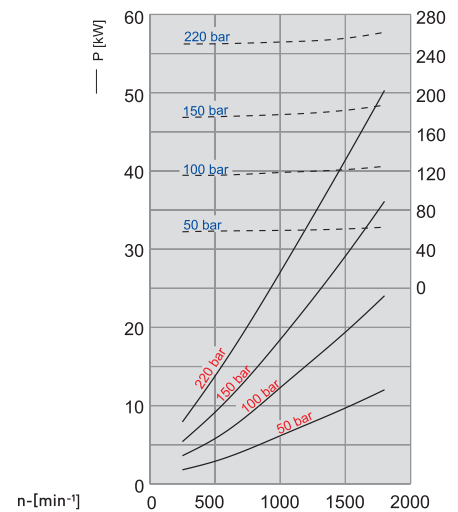
16300610369 CW - CCW

### GENERAL DATA

30-61	UNI T-1	ISO
A (mm)	176.5	188.5
B (mm)	115	127
Weight	11	13
C (Oil Inlet)	R1"	
D (Oil Outlet)	R1"	
Max. Cont. Pressure	200 BAR	
Max. Peak Pressure	220 BAR	
Displacement Value	Mineral oil based hydraulic fluids to ISO/DIN and fire resistant fluids	

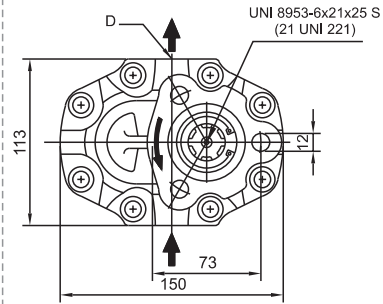
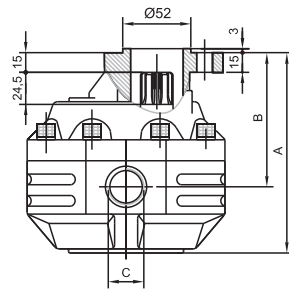


M [Nm]





## 82 LT / 1000 RPM

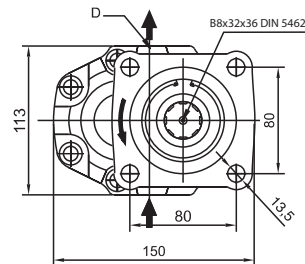
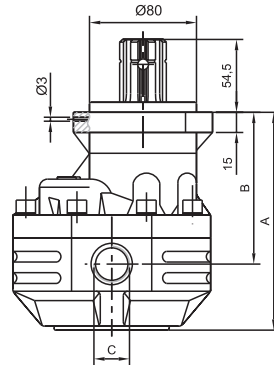


### UNI T1 PART NO.

16300820166 CW

16300820199 CCW

16300820169 CW - CCW



### ISO PART NO.

16300820366 CW

16300820399 CCW

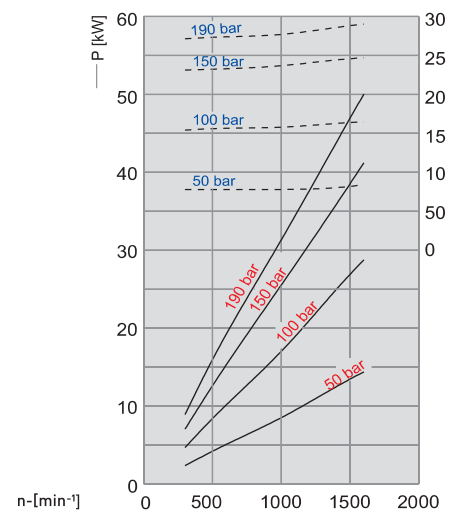
16300820369 CW - CCW

### GENERAL DATA

30 - 82	UNI T-1	ISO
A (mm)	191.5	203.5
B (mm)	121.5	133.5
Weight	11.5	14
C (Oil Inlet)	R1"	
D (Oil Outlet)	R1"	
Max. Cont. Pressure	190 BAR	
Max. Peak Pressure	210 BAR	
Displacement Value	Mineral oil based hydraulic fluids to ISO/DIN and fire resistant fluids	

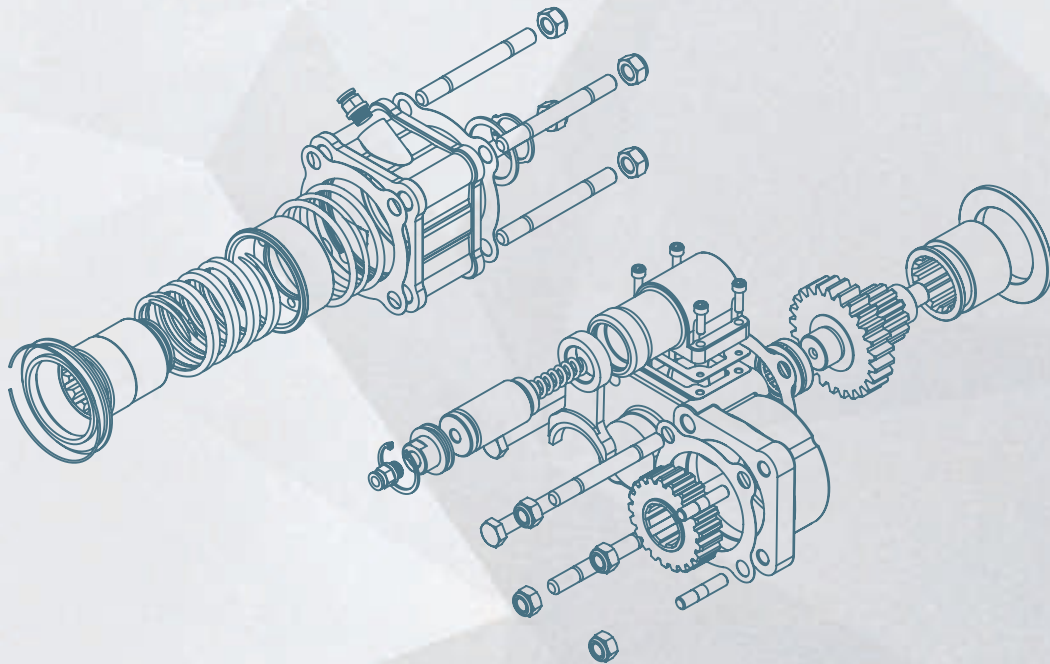


M [Nm]





# POWER TAKE OFF



# CONTENTS



[EATON](#)

[30-35](#)

[FULLER](#)

[36-40](#)

[IVECO](#)

[41-48](#)

[MAN](#)

[49-51](#)

[MERCEDES](#)

[52-63](#)

[SCANIA](#)

[64-67](#)

[VOLVO](#)

[68-73](#)

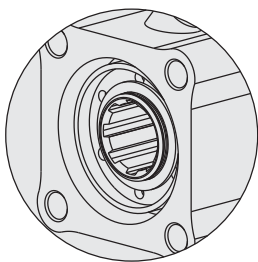
[ZF](#)

[74-76](#)

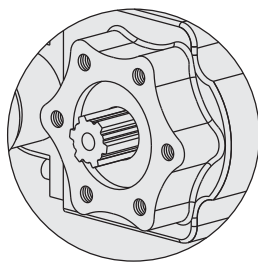


## TYPES OF PTO's

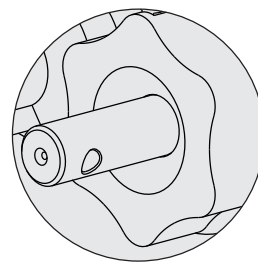
PTO's can be mounted to the gear box from the right side, left side or from the rear. PTO'S mounted from the rear come in two types: Flat Type, which is single gear and Mounting Type, which is double gear. They are then divided into three groups according to the operation system namely pneumatic, mechanic or vacuum. The below diagrams also show the four different PTO outlet types that are available: ISO, UNI, Gudgeon and Flanged.



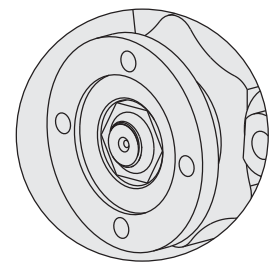
ISO



UNI



Gudgeon



Flanged

### Points to take into consideration when selecting a PTO

When selecting the correct PTO type for your vehicle you must determine the model and type of your gearbox by taking this information directly from the gearbox data plate wherever possible. We recommend this is as opposed to a chassis number search as sometimes older trucks could have several possible gearbox models fitted to that particular vehicle. Then you must:

- Determine the gear box mounting location e.g. right, left or rear
- Select the PTO which is compatible with your gearbox.
- Determine whether the power and rotation provided by the PTO meet your requirements.
- Finally determine the PTO command type e.g. pneumatic, mechanical or vacuum.

### Points to take into consideration when fitting your PTO

- Your vehicle must be turned off and stationary before attempting to fit your PTO.
- The gearbox oil must be discharged.
- Use long life or permanent grease to stop the PTO seal from moving during the assembly.
- Bolts should be tightened to 60Nm on 6 hole PTO types, 70Nm on 8 hole PTO types and 70Nm on rear mounting 4 hole PTO types.
- Replace the previously discharged gearbox oil as required.
- When starting your vehicle/engine after having assembled the PTO, listen to the gearbox and PTO for any unusual noise for up to 10 seconds.
- If an unusual noise is occurring the gears may be pressed too tightly to each other. You should remove the PTO and repeat steps 1-5 but this time using a thicker seal. Please note if there is a discernable rattling noise it may be that a thinner seal is required due to the PTO not being in proper contact with the mounting surface of the gearbox.
- Ensure the bolts have been tightened to the correct torque.
- Ensure the PTO runs at a minimum pressure of 6 BAR.

## PTO Troubleshooting

### 1) In the event the PTO is not working

- The PTO will not operate correctly at a pressure of more or less than 6 BAR.
- Pneumatic pistons can get jammed when not used for long periods and may not work even at high air pressure.
- The PTO switch control is not working.

### 2) In the event you are not able to disengage the PTO

- The pneumatic piston has deteriorated due to dust or poor compressed air quality.
- The PTO switch control is not working.
- Gear ends expand and do not let the coupler gear move free without use of clutch.

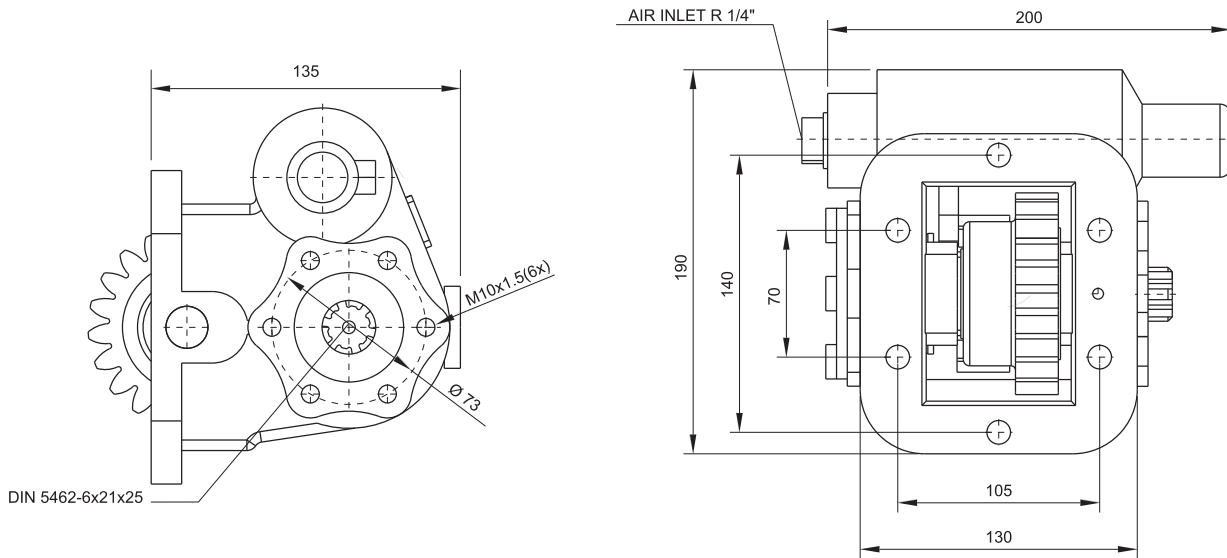
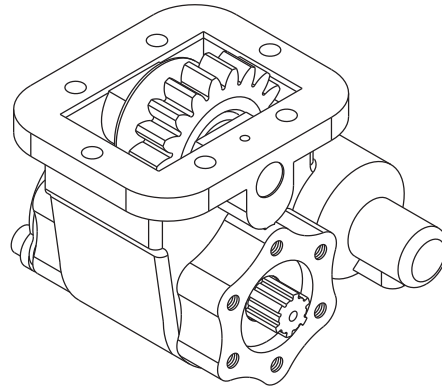
### 3) Other problems

- The torque produced by the PTO is decreased because of improperly fitted seals etc.
- Loud noise from either the PTO or gearbox due to the coupling of the two components not being correct i.e. loose bolts. This may cause damage to the ball bearings and gears in the PTO if not resolved immediately. Please be advised this could also cause severe damage to your gearbox and therefore you must stop using the PTO and correct the problem.

If you are unable to find the correct PTO for your model gearbox, please be advised M W Hydraulics develop new PTO's throughout the year, so please contact us by either phone and/or by email and we may be able to supply the necessary equipment to suit your vehicle.

EATON 4106 SIDE

PART NO. 17561128166



GENERAL DATA

MAIN GEARBOX

EATON FS/FSO/H/V/4106-5206 A/B/H

TRUCK MODELS USED

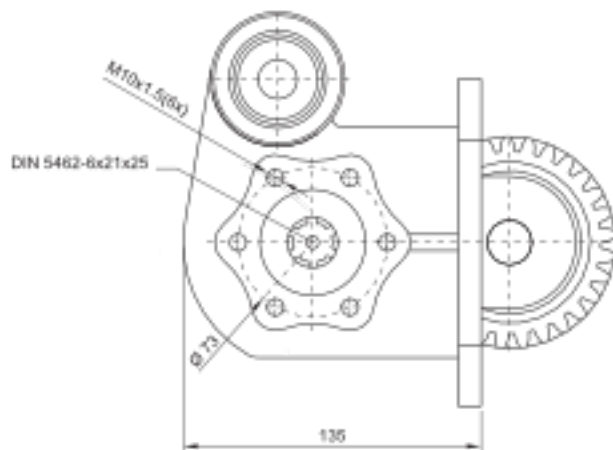
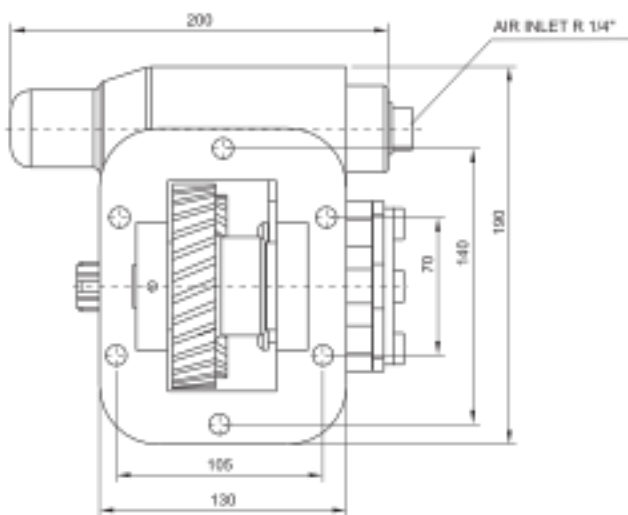
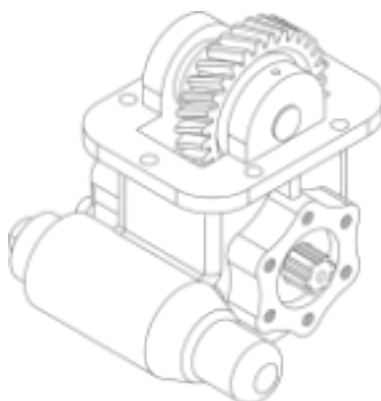
180-617-620-622 BMC PRO / 220.26-180 FATÝH BMC  
 2520 FORD CARGO / AS 950 / CHRYSLER 180.12-210-220 CD-320  
 MIDLUM RENAULT / FODEN 2000 / ERF E6.18 / 1415-1718 FORD 8.163-8.224-18.224 MAN

PART NO.	TORQUE	POWER (100 rpm)
17561128166	21 Kgm 206 Nm	10.7 Hp 8.1 Kw
SPEED	RATIO	WEIGHT
375 rpm	1/1.25	11 Kg
MOUNTING	CONTROL	ROTATION
Side	Pneumatic	Right - UNI

# POWER TAKE OFF (PTO)

## EATON 4106 SIDE HELIX

**PART NO. 17561158166**



### GENERAL DATA

#### MAIN GEARBOX

EATON FS / FSO/H/V 4106 - 5206 A/B/H

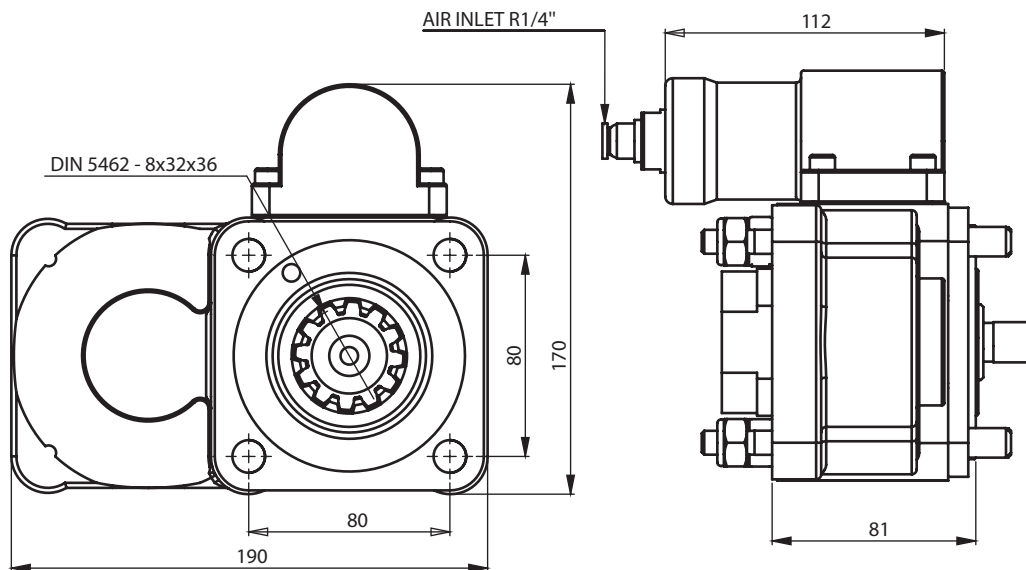
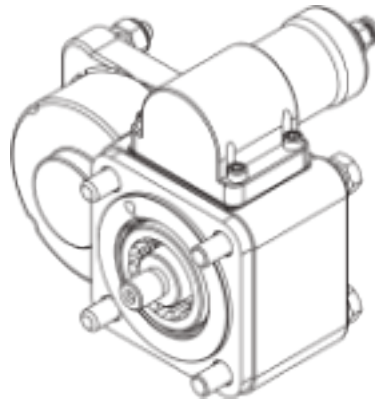
#### TRUCK MODELS USED

180 - 617 - 620 - 622 BMC PRO / 220.26-180 FATÝH BMC 2520 FORD CARGO AS 950 / CHYRESLER  
 180.12-210-220 CD - 320 MIDLUM RENAULT / FODEN 2000 / ERF E6.18 / 1415-1718 FORD  
 8.163-8.224 - 18.228 MAN

<b>PART NO.</b>	<b>TORQUE</b>	<b>POWER (100 rpm)</b>
17561158166	25 Kgm 245 Nm	26.8 Hp 20 Kw
<b>SPEED</b>	<b>RATIO</b>	<b>WEIGHT</b>
750 rpm	1/1.16	13 Kg
<b>MOUNTING</b>	<b>CONTROL</b>	<b>ROTATION</b>
Side	Pneumatic	Right - UNI

EATON - 4106 REAR

SKU: HYPTO-T-034



GENERAL DATA

MAIN GEARBOX

EATON FS/FSO - H-V 4106 - 5106 A/B/H

TRUCK MODELS USED

180 - 617 - 620 - 622 BMC PRO / 220.26-180 FATÝH BMC 2520 FORD CARGO AS 950 / CHYRESLER  
 180.12-210-220 CD - 320 MIDLUM RENAULT / FODEN 2000 / ERF E6.18 / 1415-1718 FORD  
 8.163-8.224 - 18.228 MAN

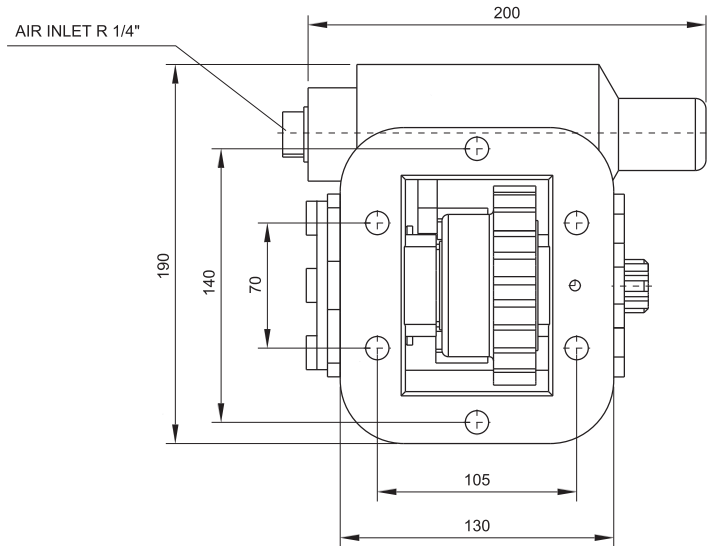
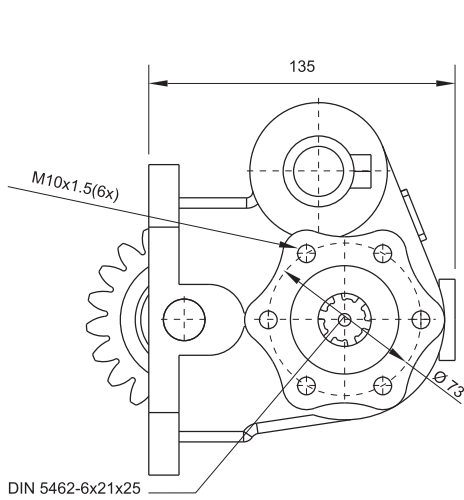
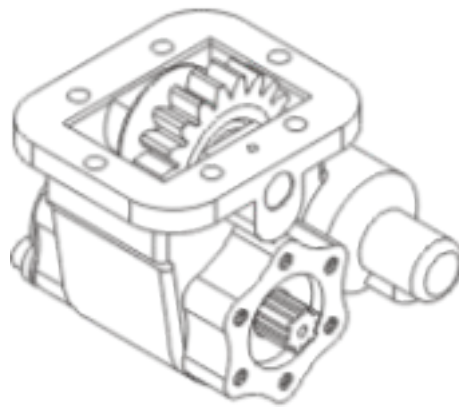
SKU	TORQUE	POWER (100 rpm)
HYPTO-T-034	26 Kg 260 Nm	24.5 Hp 13.8 Kw
SPEED	RATIO	WEIGHT
675 rpm	1/1.2	8 Kg
MOUNTING	CONTROL	ROTATION
Rear	Pneumatic	Left - ISO



# POWER TAKE OFF (PTO)

EATON 6109 - 8209 SIDE

PART NO. 17562128166



## GENERAL DATA

### MAIN GEARBOX

EATON FS/FSV/FSO/H/V 6109-6209-8209-8309 A

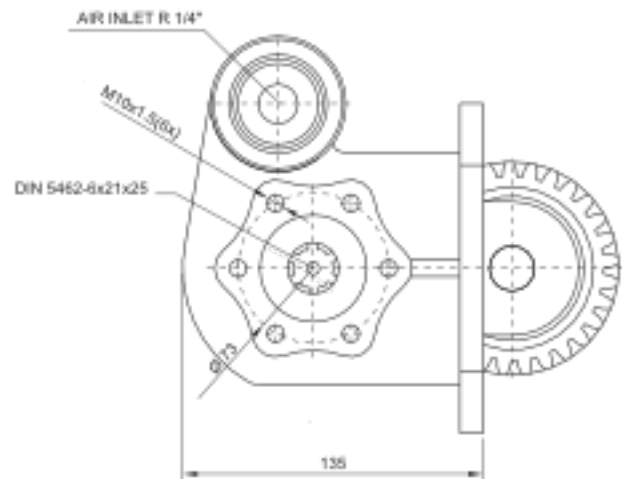
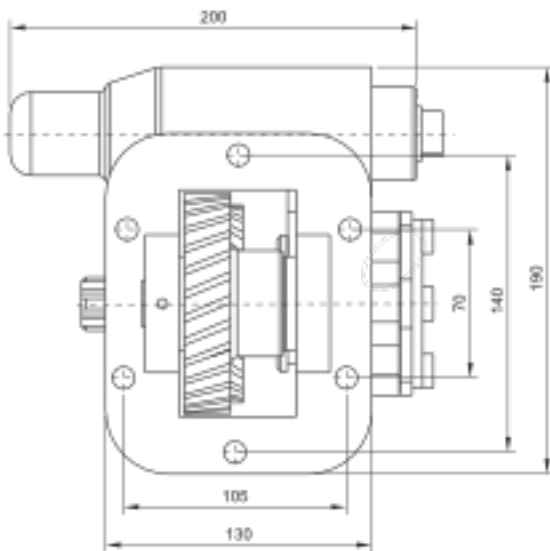
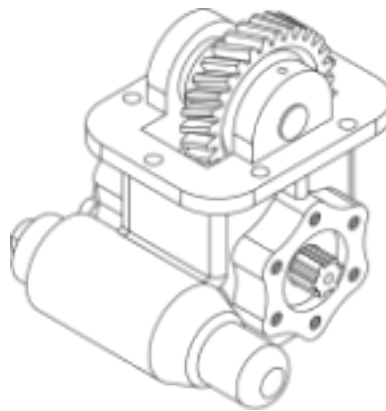
### TRUCK MODELS USED

214.26-220.26-280 FATÝH / 2520L-2621 FORD CARGO  
 522-822-620 BMC 280 / FODEN 3000 26.234-26.264-26.284 MAN 6x2  
 EURO/SEDDON 211 / NISSAN CPC 16 / RENAULT MIDLUM 270 TATA  
 LPTA 1621 TC 6x6 LPS 4021 TC

<b>PART NO.</b>	<b>TORQUE</b>	<b>POWER (100 rpm)</b>
17562128166	21 Kgm 206 Nm	10.8 Hp 8.1 Kw
<b>SPEED</b>	<b>RATIO</b>	<b>WEIGHT</b>
375 rpm	4/5	11 Kg
<b>MOUNTING</b>	<b>CONTROL</b>	<b>ROTATION</b>
Side	Pneumatic	Right - UNI

EATON 6109 HELIX SIDE

PART NO. 17562158166



GENERAL DATA

MAIN GEARBOX

EATON FS / FSV / FSO / H / V 6109 - 6209 - 8209 - 8309 A

TRUCK MODELS USED

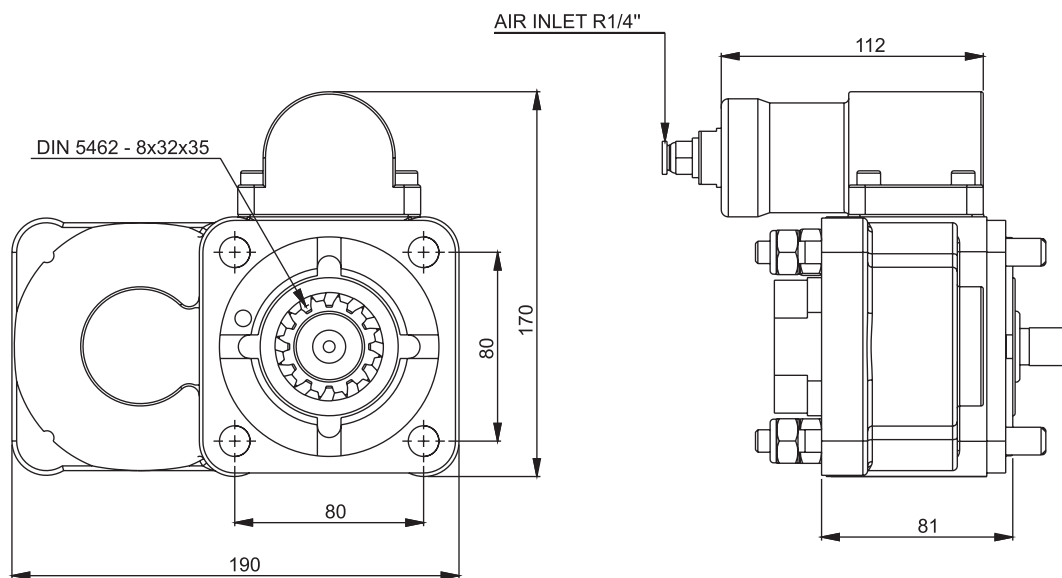
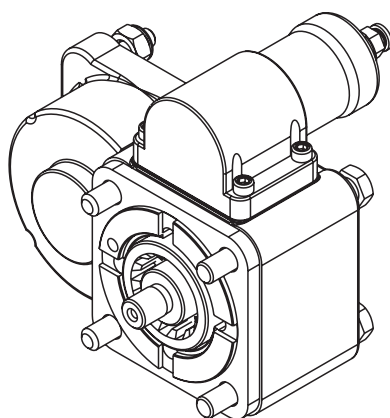
214.26-220.26-280 FATÝH / 2520L-2621 FORD CARGO  
 522-822-620 BMC 280 / FODEN 3000 26.234-26.264-26.284 MAN 6x2  
 EURO/SEDDON 211 / NISSAN CPC 16 / RENAULT MIDLUM 270 TATA  
 LPTA 1621 TC 6x6 LPS 4021 TC

<b>PART NO.</b>	<b>TORQUE</b>	<b>POWER (100 rpm)</b>
17562158166	26 Kgm 255 Nm	26.8 Hp 20 Kw
<b>SPEED</b>	<b>RATIO</b>	<b>WEIGHT</b>
750 rpm	1/1.16	13 Kg
<b>MOUNTING</b>	<b>CONTROL</b>	<b>ROTATION</b>
Side	Pneumatic	Right - UNI

# POWER TAKE OFF (PTO)

EATON 6109 REAR

PART NO. 17561138399



## GENERAL DATA

### MAIN GEARBOX

EATON FS / FSV / FSO / H/V 6109 - 6209-8209-8309 A

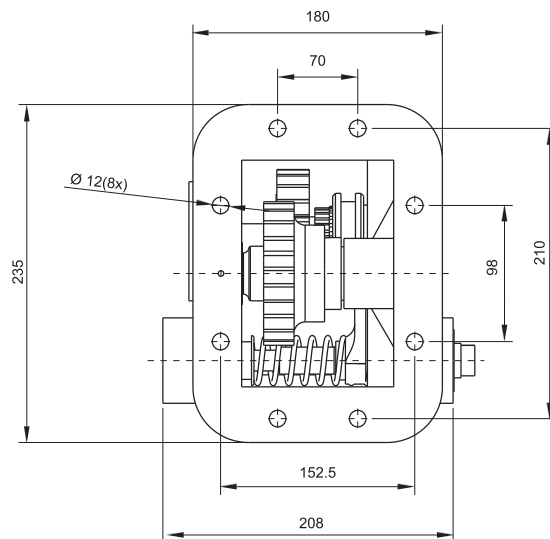
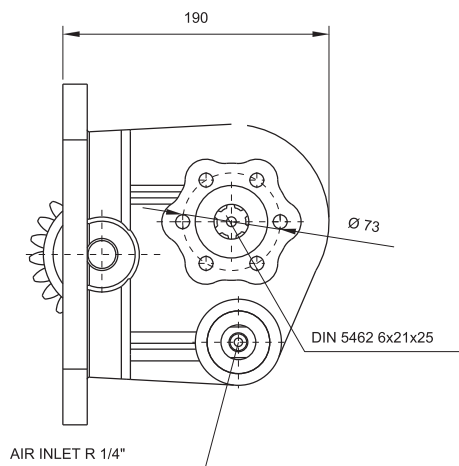
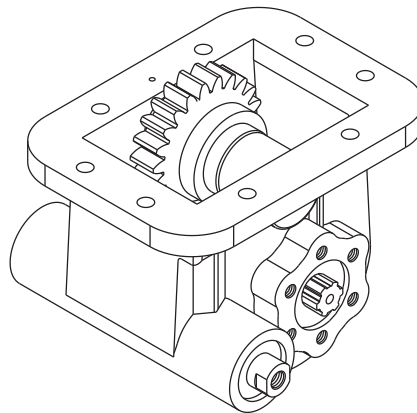
### TRUCK MODELS USED

214.26-220.26-280 FATÝH / 2520L-2621 FORD CARGO  
 522-822-620 BMC 280 / FODEN 3000 26.234-26.264-26.284 MAN 6x2  
 EURO / SEDDON 211 / NISSAN CPC 16 / RENAULT MIDLUM 270 TATA  
 LPTA 1621 TC 6x6 - LPS 4021 TC

<b>PART NO.</b>	<b>TORQUE</b>	<b>POWER (100 rpm)</b>
17561138399	26.5 Kg 260 Nm	24.5 Hp 18.3 Kw
<b>SPEED</b>	<b>RATIO</b>	<b>WEIGHT</b>
675 rpm	5/6	8 Kg
<b>MOUNTING</b>	<b>CONTROL</b>	<b>ROTATION</b>
Rear	Pneumatic	Left - UNI

FULLER 11609 UNI SIDE

PART NO. 17571118166



GENERAL DATA

MAIN GEARBOX

RTO 11609 - 11613 - 11709 - 12709 - 14609  
MRTO/RTX 9509 - 9513 - 9710 - 11509 - 14613 - 15613 - 15615 A/B/H

TRUCK MODELS USED

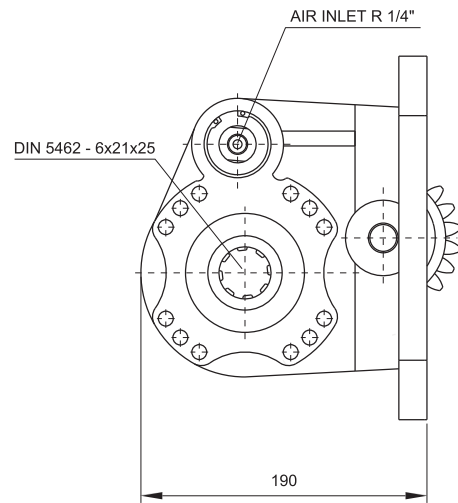
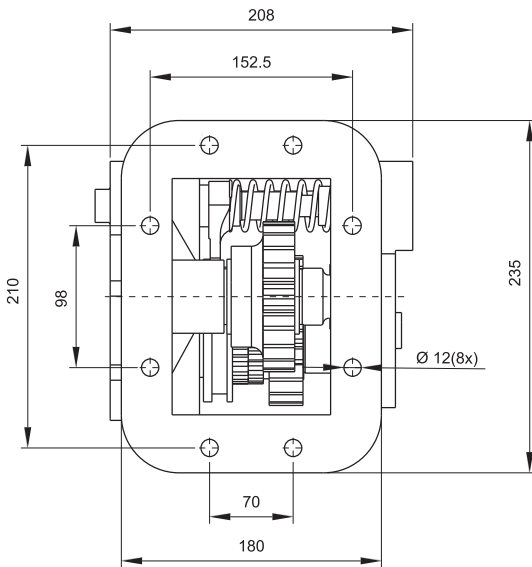
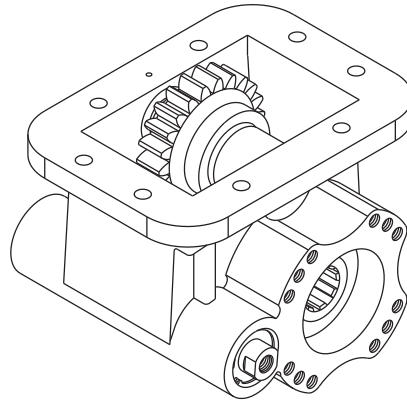
19.361 - 266.321 - 26.240 - 26.280 MAN  
180.24 - 280.26 - 190.26 - 190.30 - 190.35 - 190.42 198.38 - 240.36 - 330.26 - 330.35 - 380E30 IVECO 270-26 FATÝH BMC  
DAF 85-2605 - 28002815- 3030 - 3300 - 3300 - 3600 - 4400 ERF E6-E8E12-EC 14  
LEYLAND / FODEN 4000 / MAGIRUS / 19.320 - 30.280 MAN / FIAT 619 - 697

<b>PART NO.</b>	<b>TORQUE</b>	<b>POWER (100 rpm)</b>
17571118166	40 Kgm 392.4 Nm	7.6 Hp 43.1 Kw
<b>SPEED</b>	<b>RATIO</b>	<b>WEIGHT</b>
1050 rpm	1/1	19 Kg
<b>MOUNTING</b>	<b>CONTROL</b>	<b>ROTATION</b>
Bottom	Pneumatic	Right - UNI

# POWER TAKE OFF (PTO)

## FULLER 11609 ISO BOTTOM

**PART NO. 1757118366**



### GENERAL DATA

#### MAIN GEARBOX

RTO 11609 - 11613 - 11709 - 12709 - 14609  
 MRTO/RTX 9509 - 9513 - 9710 - 11509 - 14613 - 15613 - 15615 A/B/H

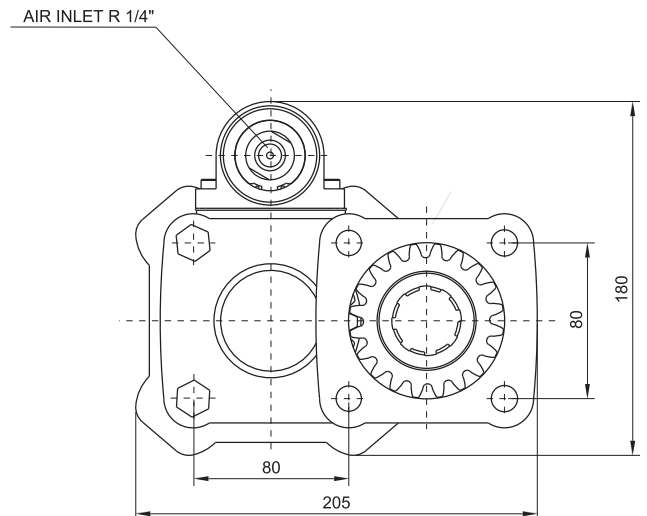
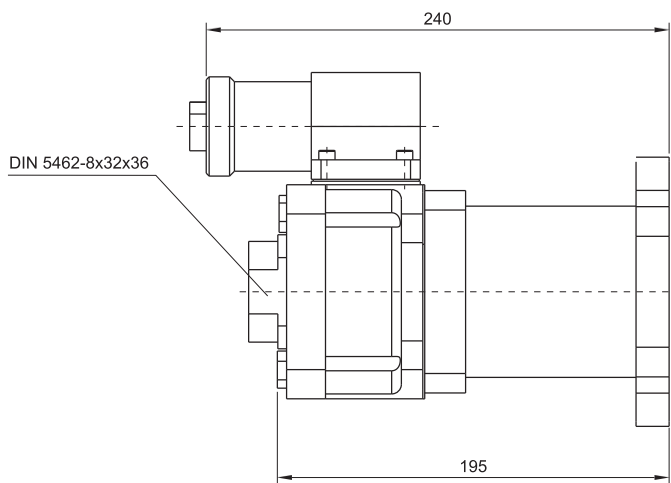
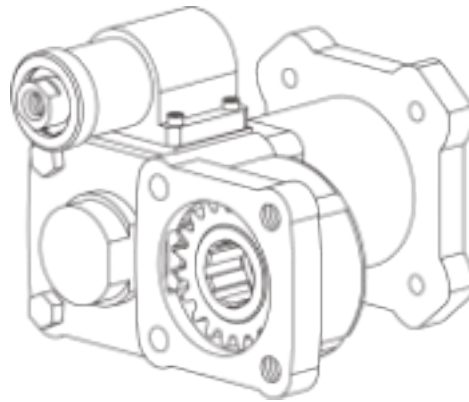
#### TRUCK MODELS USED

19.361 - 26.321 - 26.240 - 26.280 MAN  
 180.24 - 280.26 - 190.26 - 190.30 - 190.35 - 190.42 198.38 - 240.36 - 330.26 - 330.30 - 330.35 - 380E30 IVECO /  
 270-26 FATYH BMC  
 DAF 85-2605 - 2800 - 2815- 3030 - 3300 - 3330 - 3600 - 4400 ERF E6 - E8 - E12 - EC 14  
 LEYLAND / FODEN 4000 / MAGIRUS / 19.320 - 30.280 MAN / FIAT 619 - 697

<b>PART NO.</b>	<b>TORQUE</b>	<b>POWER (100 rpm)</b>
1757118366	40 Kgm 392.4 Nm	57.8 Hp 43.1 Kw
<b>SPEED</b>	<b>RATIO</b>	<b>WEIGHT</b>
1050 rpm	1/1	19 Kg
<b>MOUNTING</b>	<b>CONTROL</b>	<b>ROTATION</b>
Bottom	Pneumatic	Right - UNI

FULLER 11609 REAR

PART NO. 17571138399



GENERAL DATA

MAIN GEARBOX

EATON FULLER RT-RTF-RTO-RTX-RTOF-RTOX-MRT11609A-B-RT-RTX-RTO-RTL0-RTOO-RTOOF-RTOOX 11509-14613-15613-15615-A-B-H / RTO-RTX 11709,12609 / RTO 11608 LL / RTX 11613-B/RT-RTX 11709 H-B / RT-RTF 910 / RTO 910 / RT1110 / RTO 1110 / RT 7609 / RTO-RTX 7609 / RT-RTO 7613 / RT-RTF 9509 A-C-RT-RTF-MRT-MRTO-RTO-RTOF 9509, 9513, 9710 A-B-RT-RTO-RTX 12509,12513,12709 H, 12710-B/RT-RTF-RTO-RTOF-RTL0-RTX 14608 LL, 14609, 14613, 14710E

TRUCK MODELS USED

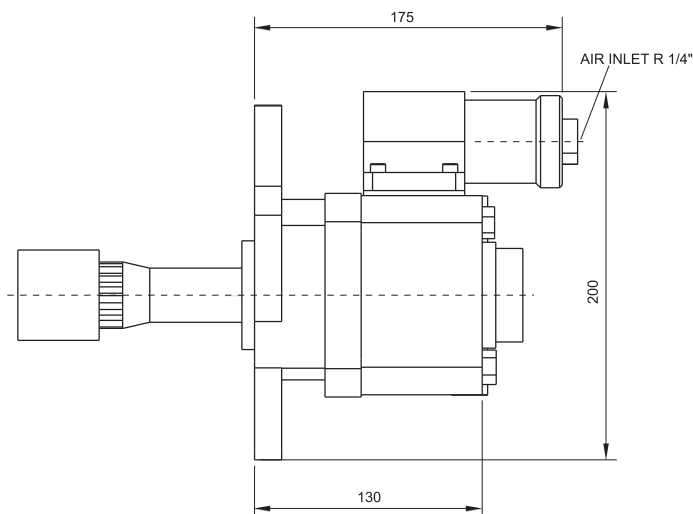
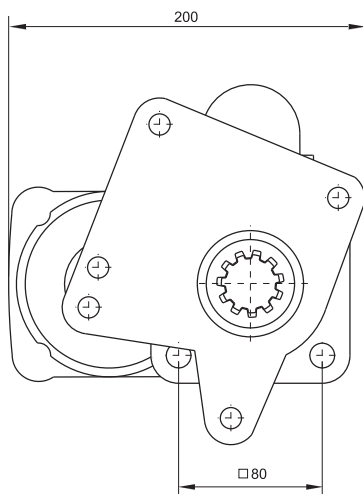
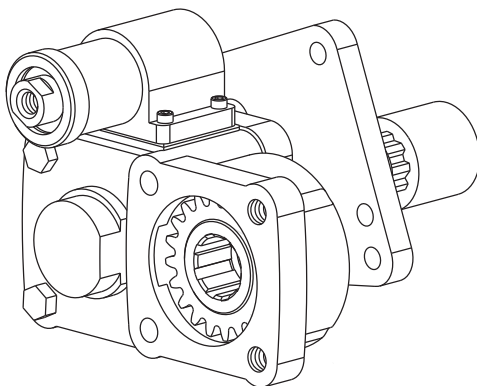
19.361-26.321-26.240-26.280 MAN / 180.24-180.26-190.26-190.30 - 190.35-190.42-198.38-240.36-330.26-330.30-330.35-380E30 IVECO / 270-26 FATYH BMC / DAF 85-2605-2800-2815-3030-3300-3330 - 3600-4400 / ERF E6-E8-E12-EC 14 / LEYLAND / FODEN 4000 / MAGIRUS / 19.320-30.280 MAN / FIAT 619-697

<b>PART NO.</b>	<b>TORQUE</b>	<b>POWER (100 rpm)</b>
17571138399	26.5 Kgm 260 Nm	32.9 Hp 24.5 Kw
<b>SPEED</b>	<b>RATIO</b>	<b>WEIGHT</b>
900 rpm	1/1.2	14 Kg
<b>MOUNTING</b>	<b>CONTROL</b>	<b>ROTATION</b>
Rear	Pneumatic	Left - ISO

# POWER TAKE OFF (PTO)

## FULLER 17316 REAR

PART NO. 17572138399



### GENERAL DATA

#### MAIN GEARBOX

RTSO 12316-14316-15316-17316 A

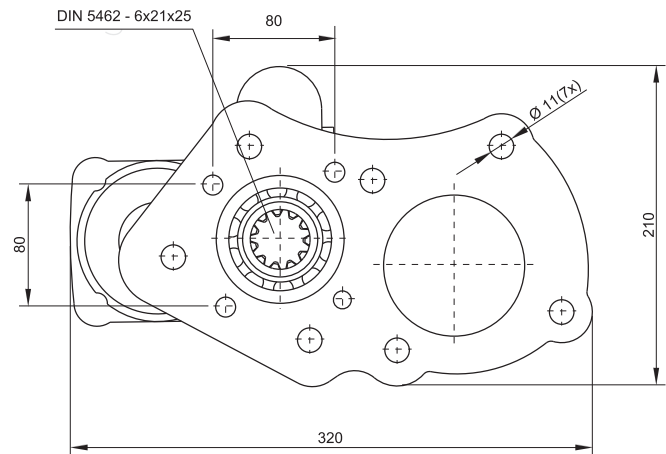
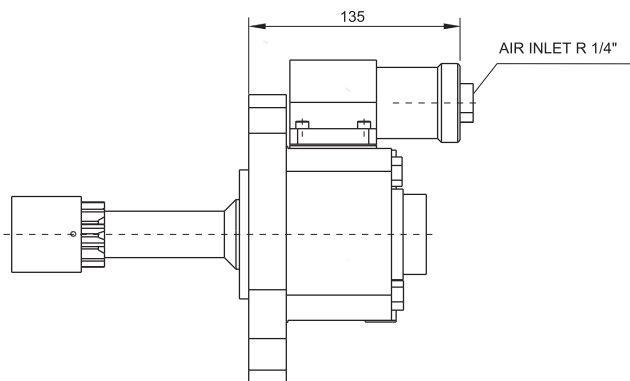
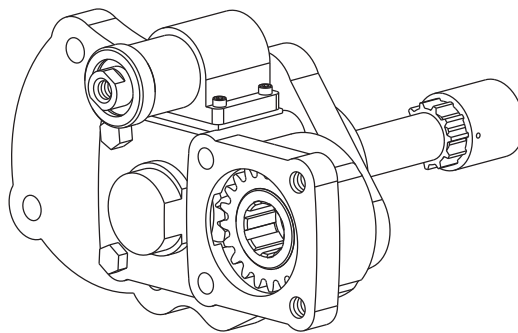
#### TRUCK MODELS USED

19.463 SILENT  
 19.314-19.364-19.414-19.464-18.403-35.403-21.314-24.417-27.364 MAN  
 35.314-35.414-37.464-41.414-41.603-41.464-50.414 MAN

<b>PART NO.</b>	<b>TORQUE</b>	<b>POWER (100 rpm)</b>
17572138399	24 Kgm 235.4 Nm	30.6 Hp 22.9 Kw
<b>SPEED</b>	<b>RATIO</b>	<b>WEIGHT</b>
1000 rpm	1/1.2	13 Kg
<b>MOUNTING</b>	<b>CONTROL</b>	<b>ROTATION</b>
Rear	Pneumatic	Left - ISO

FULLER 15612 REAR

PART NO. 17573138399



GENERAL DATA

MAIN GEARBOX

EATON - FULLER 11612 - 12612 - 13612 - 15612 - 14607 - 16612 A/H

TRUCK MODELS USED

440E42 - 720E37 EUROTECH - EUROTRACKER - EUROSTAR / LEYLAND  
 80.330-85.330-85.400 DAF / 190.36-240.36 IVECO / FODEN 4275  
 SEDDON ATKINSON 3.11 L 25 / ERF E 14.35 TT / 400E34 IVECO

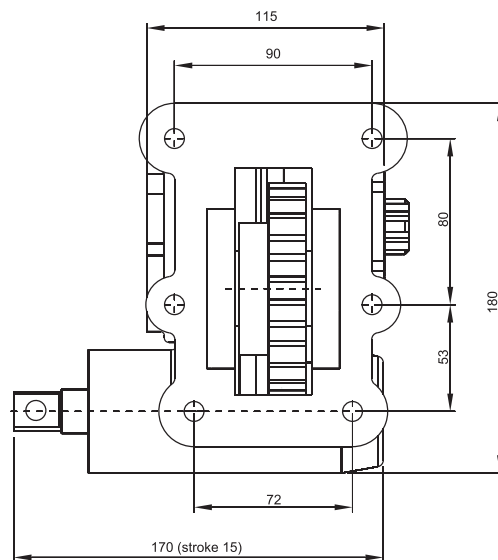
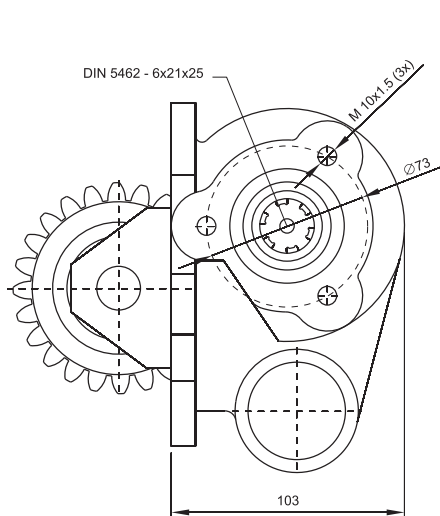
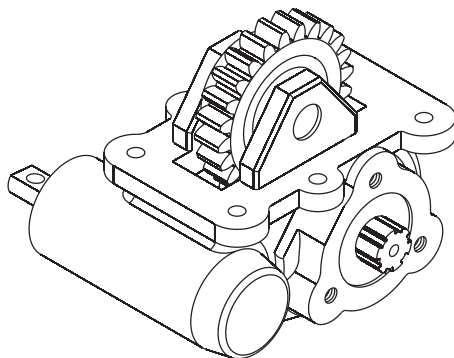
<b>PART NO.</b>	<b>TORQUE</b>	<b>POWER (100 rpm)</b>
17573138399	26.5 Kgm 260 Nm	24.5 Hp 8.3 Kw
<b>SPEED</b>	<b>RATIO</b>	<b>WEIGHT</b>
675 rpm	1/1.2	16 Kg
<b>MOUNTING</b>	<b>CONTROL</b>	<b>ROTATION</b>
Rear	Pneumatic	Left - ISO



# POWER TAKE OFF (PTO)

IVECO 2828

PART NO. 17601127166



## GENERAL DATA

### MAIN GEARBOX

2828.5-2831.5-28028-28031

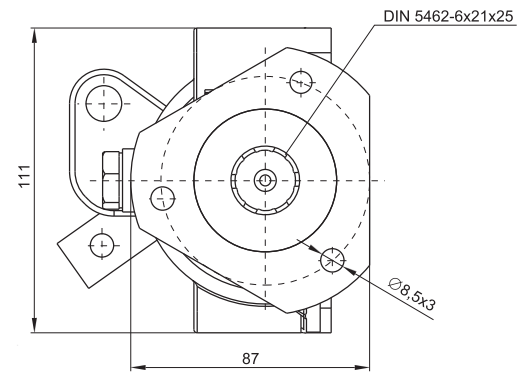
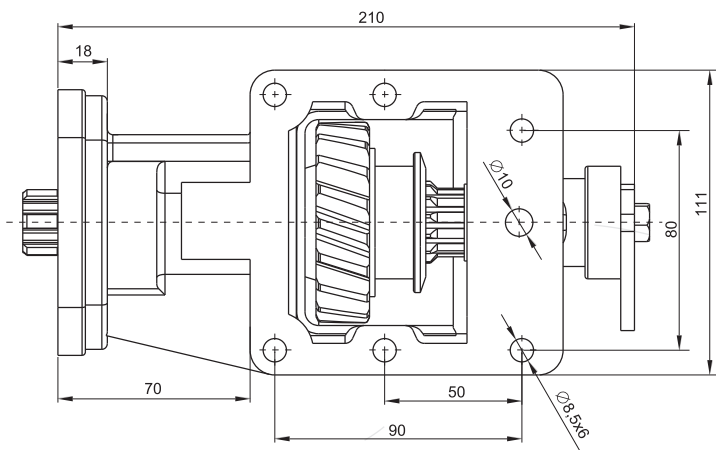
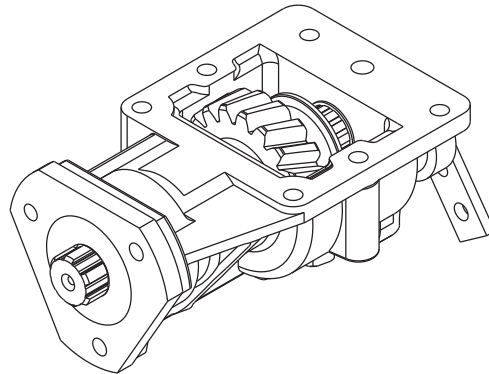
### TRUCK MODELS USED

35.9-65.9-35 NC-50 - NC-50.9-50.11 IVECO

<b>PART NO.</b>	<b>TORQUE</b>	<b>POWER (100 rpm)</b>
17601127166	15 Kgm 147 Nm	6.2 Hp 4.6 Kw
<b>SPEED</b>	<b>RATIO</b>	<b>WEIGHT</b>
300 rpm	1/1.26	9 KG
<b>MOUNTING</b>	<b>CONTROL</b>	<b>ROTATION</b>
Right	Mechanic	Right - UNI

IVECO 2826 SIDE

PART NO. 17602127199



GENERAL DATA

MAIN GEARBOX

2826.5 IVECO

TRUCK MODELS USED

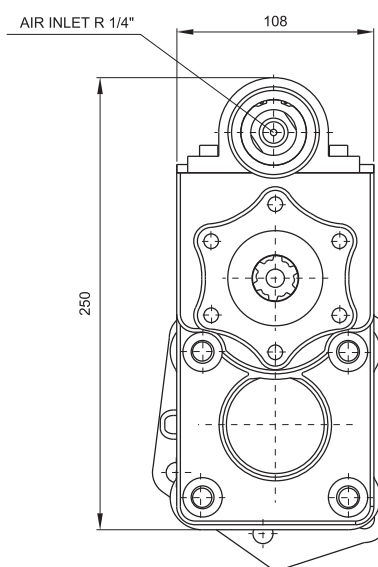
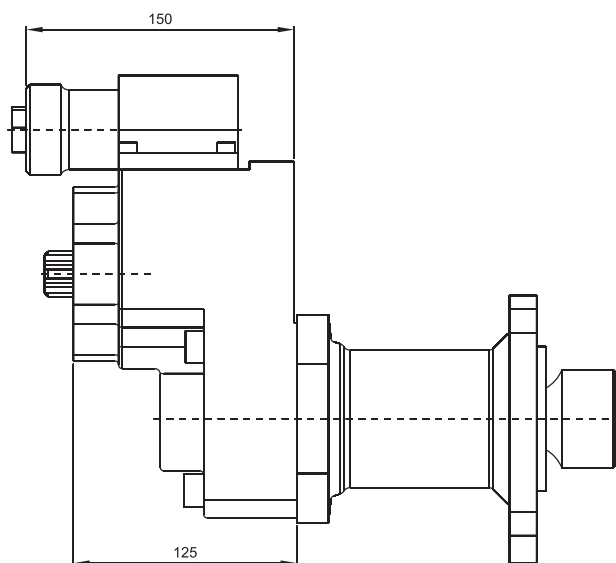
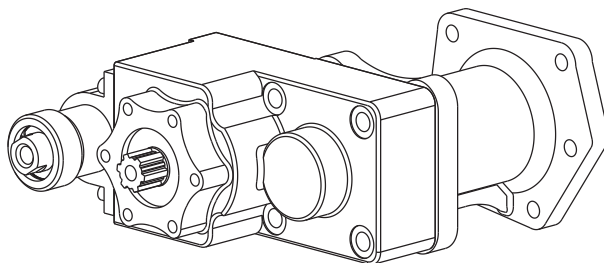
30.10 - 35.10 - 35.12 - 49.10 - 49.12 - 59.12 - 60.12 IVECO

<b>PART NO.</b>	<b>TORQUE</b>	<b>POWER (100 rpm)</b>
17602127199	21.3 Kgm 208 Nm	27.3 Hp 20.4 Kw
<b>SPEED</b>	<b>RATIO</b>	<b>WEIGHT</b>
1000 rpm	1/1	6 KG
<b>MOUNTING</b>	<b>CONTROL</b>	<b>ROTATION</b>
Left Side	Mechanical	Left - UNI

## POWER TAKE OFF (PTO)

IVECO 2846 REAR

PART NO. 17604138199



### GENERAL DATA

#### MAIN GEARBOX

2846.5-2842-2835-2830-2646

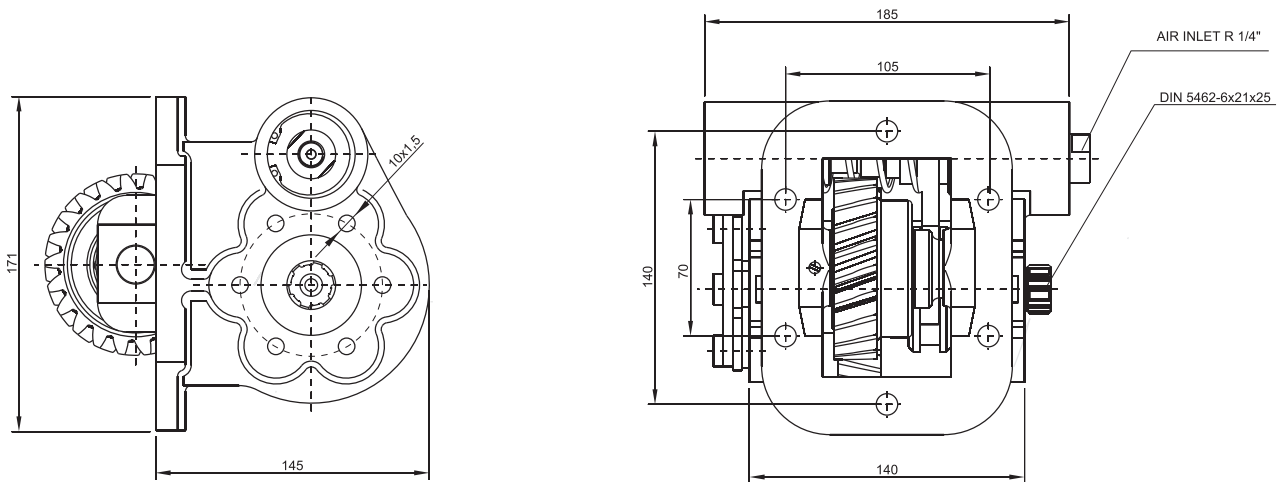
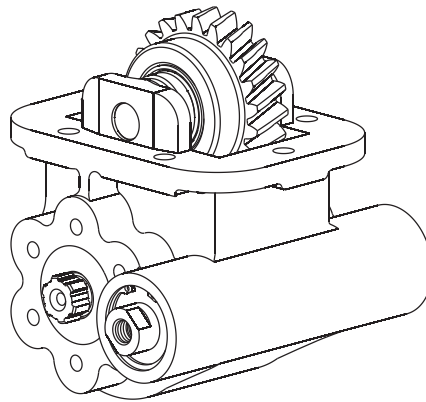
#### TRUCK MODELS USED

FIAT IVECO / 65.15-79.13-79.14-80.14 IVECO / 65.12-79.12-95.14  
100.13-109.14-135.14 ZETA IVECO

<b>PART NO.</b>	<b>TORQUE</b>	<b>POWER (100 rpm)</b>
17604138199	18.3 Kgm 179.5 Nm	16.8 Hp 12.5 Kw
<b>SPEED</b>	<b>RATIO</b>	<b>WEIGHT</b>
500 rpm	1/1.12	14 KG
<b>MOUNTING</b>	<b>CONTROL</b>	<b>ROTATION</b>
Rear	Pneumatic	Left - UNI

IVECO 2855 SIDE

PART NO. 17605127166



GENERAL DATA

MAIN GEARBOX

2845.6 - 2855.6 IVECO

TRUCK MODELS USED

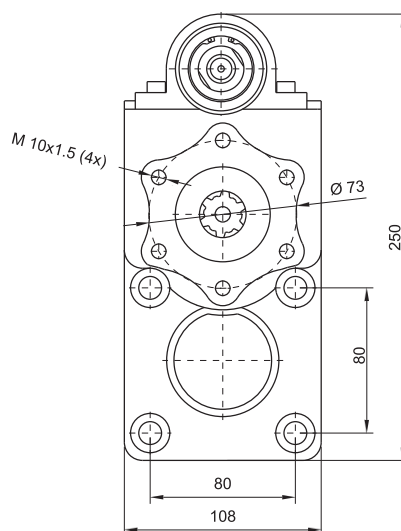
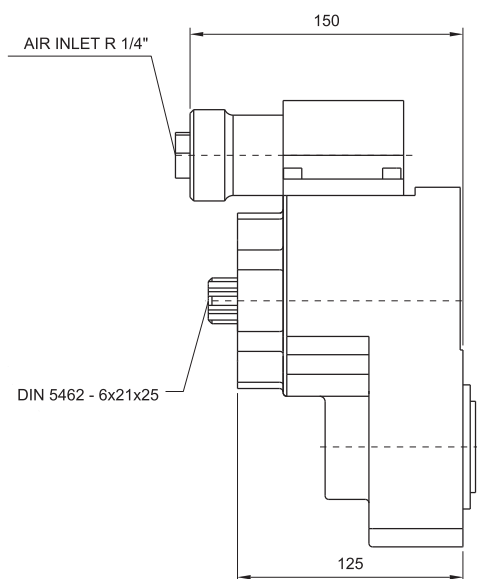
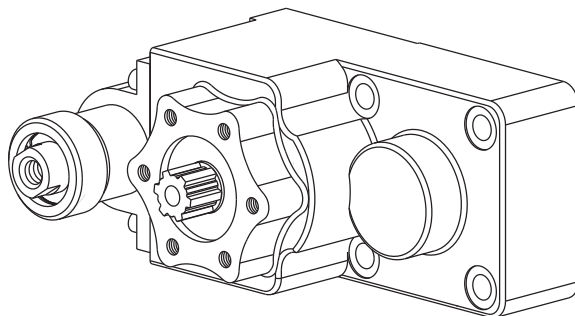
IVECO 60.10 - 60.12-75.14-80.14-80.12-85.12-85.14-120.114-140.14-150.14-130E15  
 150E21-220E21-60.14-65E12-65E14-75.12-75E14-80E15-80E18-85E13-85E15  
 100E15-100E18-130E15-130E18

<b>PART NO.</b>	<b>TORQUE</b>	<b>POWER (100 rpm)</b>
17605127166	24.4 Kgm 240 Nm	32 Hp 23.3 Kw
<b>SPEED</b>	<b>RATIO</b>	<b>WEIGHT</b>
1000 rpm	1/0.88	11 KG
<b>MOUNTING</b>	<b>CONTROL</b>	<b>ROTATION</b>
Right Side	Mechanical	Right - UNI

## POWER TAKE OFF (PTO)

### IVECO 2855 REAR

SKU: HYPTO-T-035



#### GENERAL DATA

##### MAIN GEARBOX

2845.6-2855.6 IVECO

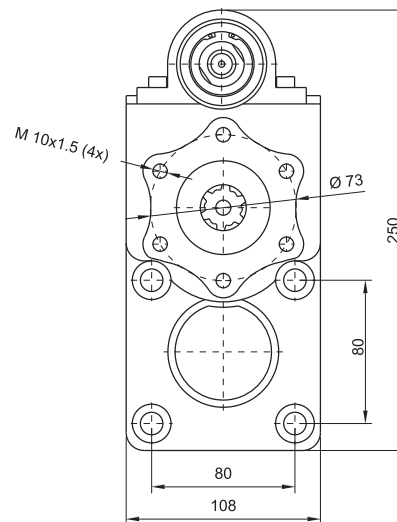
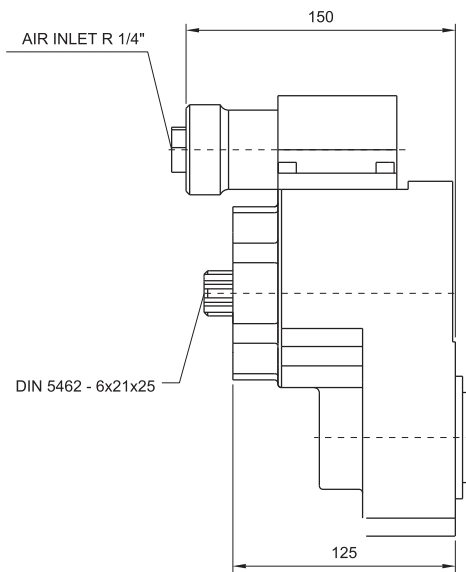
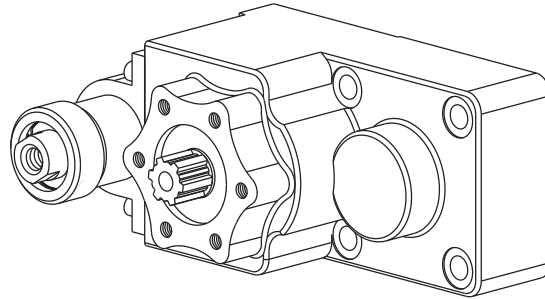
##### TRUCK MODELS USED

IVECO 60.10-60.12-75.14-80. 14-80. 12-85.12 - 85.14-120.14-140.14-150.14  
130E15-150E21-220E21-60.14-65E12-65E14-75.12-75E14-75E15 - 80E15 - 80E18  
85E13-85E15-100E15-100E18-130E15-130E18

SKU	TORQUE	POWER (100 rpm)
HYPTO-T-035	18.3 Kgm 179.5 Nm	16.8 Hp 12.5 Kw
SPEED	RATIO	WEIGHT
650 rpm	1/1.12	10 KG
MOUNTING	CONTROL	ROTATION
Rear	Pneumatic	Left - UNI

IVECO 2865 REAR

SKU: HYPTO-T-036



GENERAL DATA

MAIN GEARBOX

2865.6

TRUCK MODELS USED

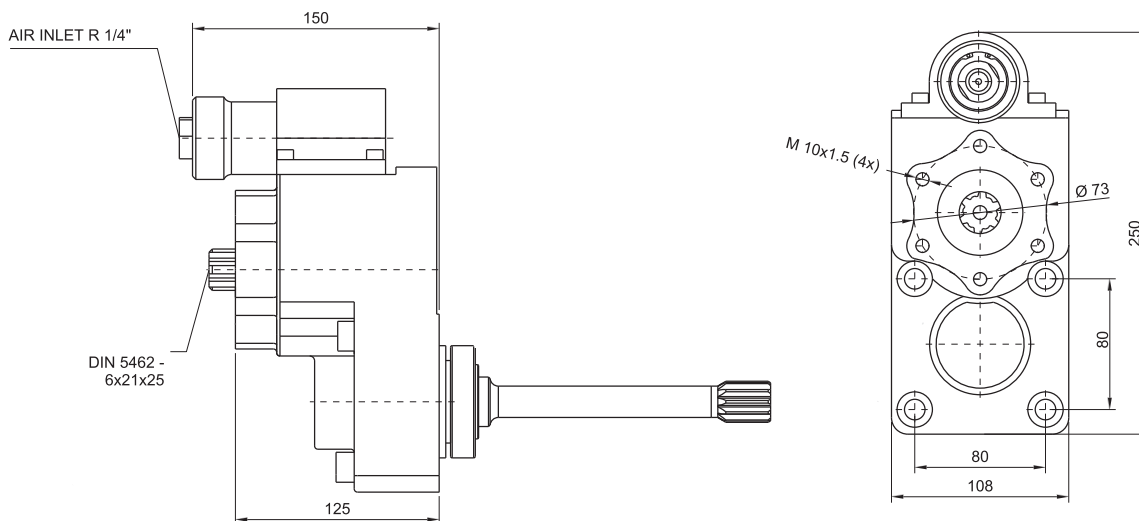
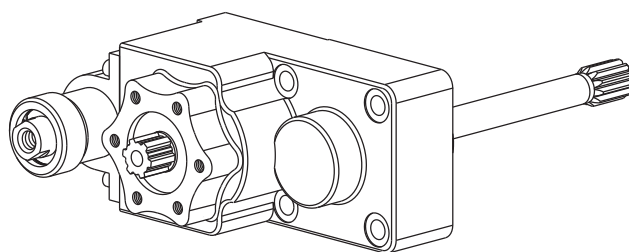
IVECO EUROCARGO / 100E21-120E18-120E23-130E23  
 180E18-80.21-100.18-120.23-130.23-150.18-150.23-170.18-170.23  
 150E21-220E21 EUROCARGO IVECO

SKU	TORQUE	POWER (100 rpm)
HYPTO-T-036	18.3 Kgm 179.5 Nm	16.8 Hp 12.5 Kw
SPEED	RATIO	WEIGHT
650 rpm	1/1.12	10 KG
MOUNTING	CONTROL	ROTATION
Rear	Pneumatic	Left - UNI

# POWER TAKE OFF (PTO)

## Hydraulic PTO for Iveco 2870 Rear Euro Cargo

SKU: HYPTO-T-037



### GENERAL DATA

#### MAIN GEARBOX

2870.9

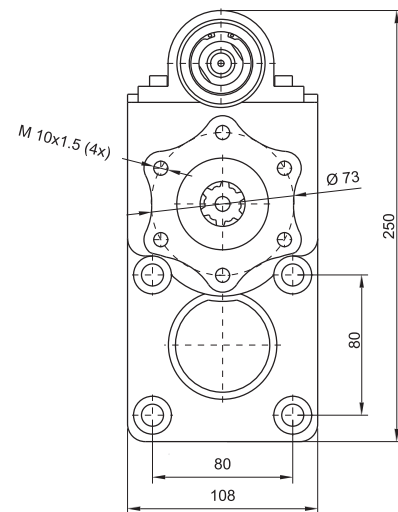
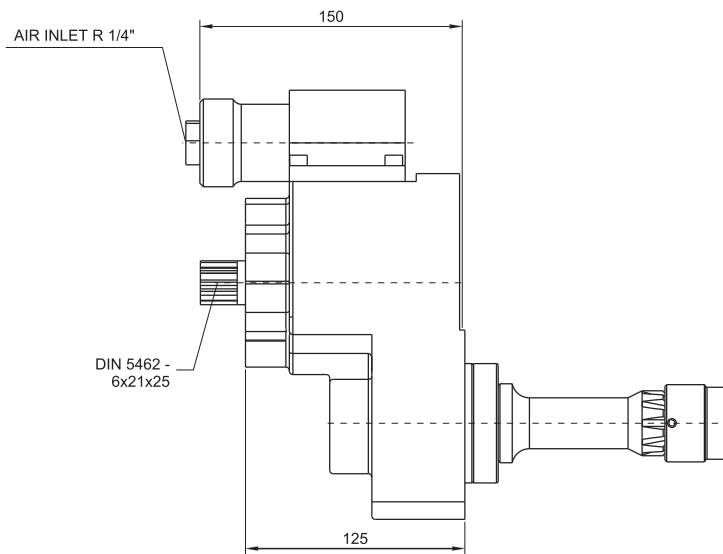
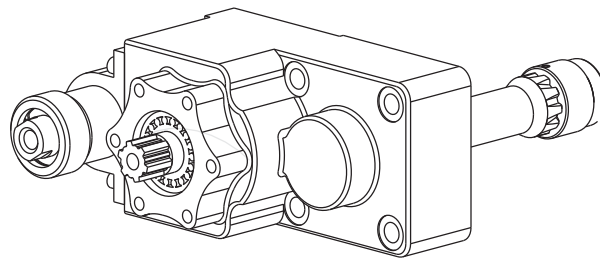
#### TRUCK MODELS USED

120E18-120E23-130E15-130E18-130E23-150E15-150E18-150E23-170E18  
 170E23-180E21-250E21-100E18-100E23-100E15-130E15-130E18  
 EURO CARGO IVECO/ 250 E24-230 E18-180 E28-250 E23  
 EURO CARGO IVECO

SKU	TORQUE	POWER (100 rpm)
HYPTO-T-037	22.4 Kgm 219.7 Nm	20.8 Hp 15.5 Kw
SPEED	RATIO	WEIGHT
675 rpm	1/1.12	12 KG
MOUNTING	CONTROL	ROTATION
Rear	Pneumatic	Left - UNI

IVECO 2895 REAR

PART NO. 17608138199



GENERAL DATA

MAIN GEARBOX

2985.9

TRUCK MODELS USED

120E18-120E23-130E15-130E18-130E23-150E15-150E18-150E23-170E18  
170E23-180E21-180E28-250E21-100E18-100E23-100E15-130E15-130E18  
EUROCARGO IVECO

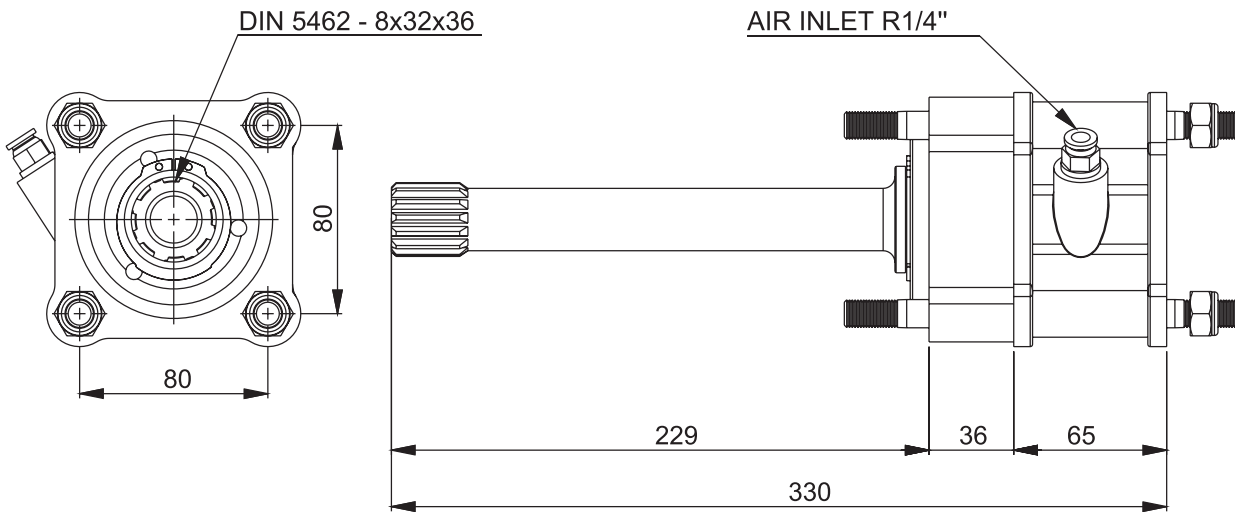
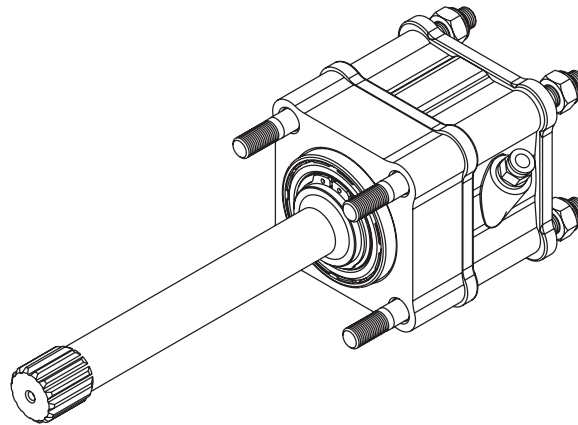
<b>PART NO.</b>	<b>TORQUE</b>	<b>POWER (100 rpm)</b>
17608138199	22.4 Kgm 219.7 Nm	20.8 Hp 15.5 Kw
<b>SPEED</b>	<b>RATIO</b>	<b>WEIGHT</b>
675 rpm	1/1.12	12.5 KG
<b>MOUNTING</b>	<b>CONTROL</b>	<b>ROTATION</b>
Rear	Pneumatic	Left - UNI



# POWER TAKE OFF (PTO)

MAN

SKU: HYPTO-T-028



## GENERAL DATA

### MAIN GEARBOX

ZF ASTRONIC - 16AS 251 / 16S 251 + PLATE 12AS 1631 / 16AS 1931 / 12AS 2131 / 12AS 2141 / 12AS 2300 IT / 12AS 2301 IT / 12AS 2331 / 12AS 2341 / 12AS 2501 IT / 12AS 2531 / 12AS 2541 / 12AS 2741 / 12AS 2941 / 12AS 3001 IT / 12AS 3002 IT / 12AS 3141 / 16AS2231 / 16AS 2600 IT / 16AS2601 IT / 16AS2631 IT INTERDAR

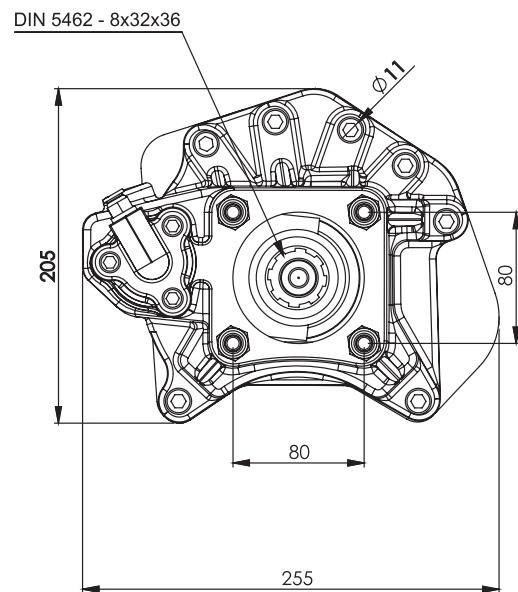
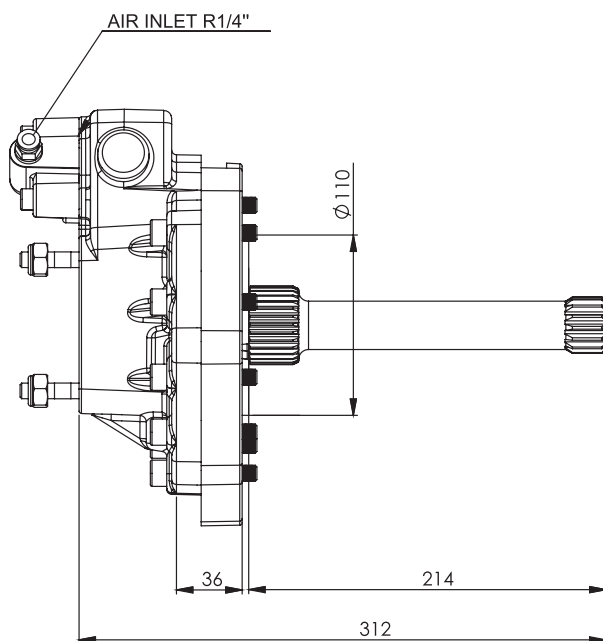
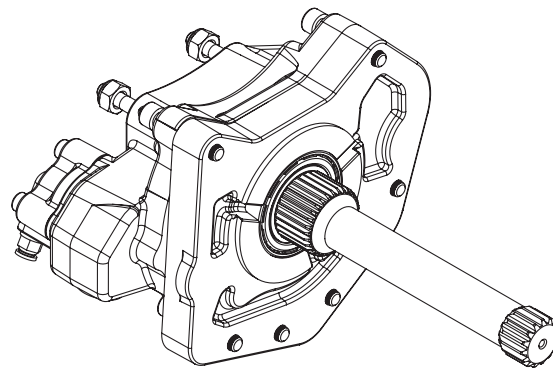
### TRUCK MODELS USED

TG - A 18,460A - 19,430 MAN EUROPE 6x4 / 3300 DAF - 85,330 CF DAF / 14,463 MAN / IVECO 480 STRALIS / 39,390 MAN TGA

SKU	TORQUE	POWER (100 rpm)
HYPTO-T-028	48.9 Kgm 479.7 Nm	-- Hp 25.7 Kw
SPEED	RATIO	WEIGHT
513 rpm	---	7 KG
MOUNTING	CONTROL	ROTATION
Rear	Pneumatic	Right - ISO

MERCEDES ACTROS A

PART NO. 17513138366



GENERAL DATA

MAIN GEARBOX

G125-9, G135, G155-9, G180, G200, G211-9, G240, G255, G260 (11.9-15.9-16.2)  
G125-16, G135-16, G155-16, G180-16, G200-16, G210-16, G240-16, G255

TRUCK MODELS USED

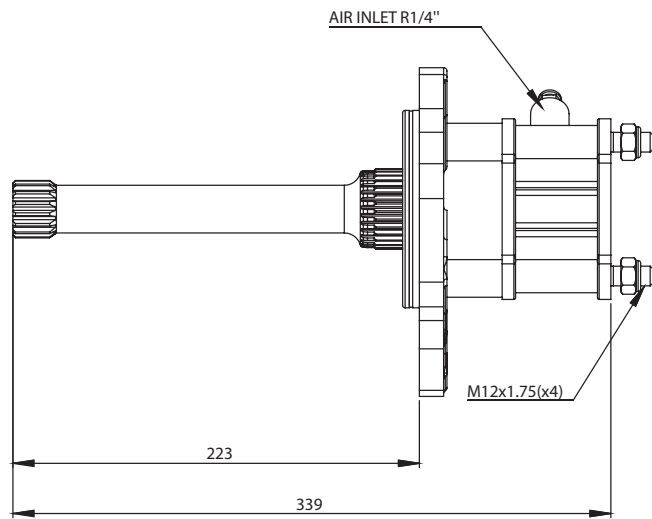
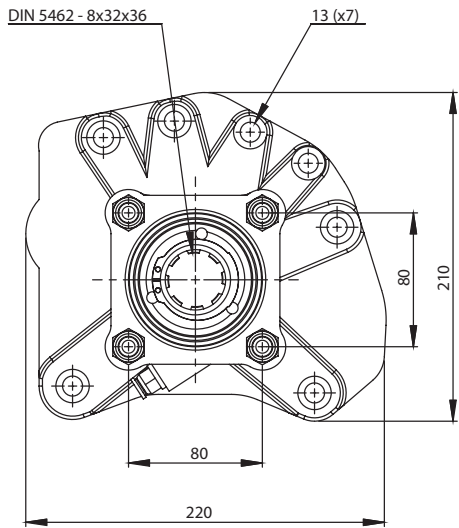
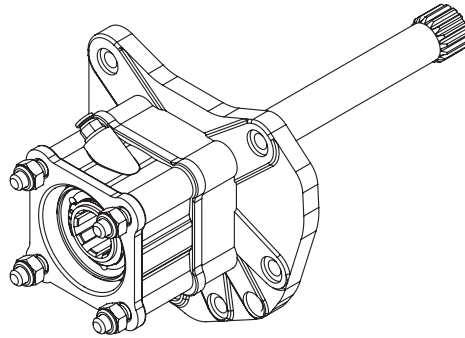
1729 - 1735 - 1827 - 1834 - 1838 - 1929 - 1935 - 2038 - 2429 - 2435 - 2527 - 2531 - 2534 - 2629 - 2631 - 2635 - 2638 -  
3229 - 3234 - 3534 - 3535 - 1831 - 1835 - 1840 - 1844 - 1848 - 1850 - 1857 - 1934 - 1938 - 1953 - 2044 - 2050 - 2544 -  
2550 - 2650 - 2643 - 2644 - 3031 - 3234 - 3331 - 3335 - 3336 - 3340 - 3235 - 2031 - 2040 - 2648 - 3548 - 3553 - 3557 -  
3538 - 2641 - 3244 ACTROS

PART NO.	TORQUE	POWER (100 rpm)
17513138366	23.5 Kgm 130.5 Nm	16 Hp 12 Kw
SPEED	RATIO	WEIGHT
500 rpm	1/1	9.5 KG
MOUNTING	CONTROL	ROTATION
Rear	Pneumatic	Right - ISO

# POWER TAKE OFF (PTO)

## MERCEDES AXOR - 1

SKU: HYPTO-T-020



### GENERAL DATA

#### MAIN GEARBOX

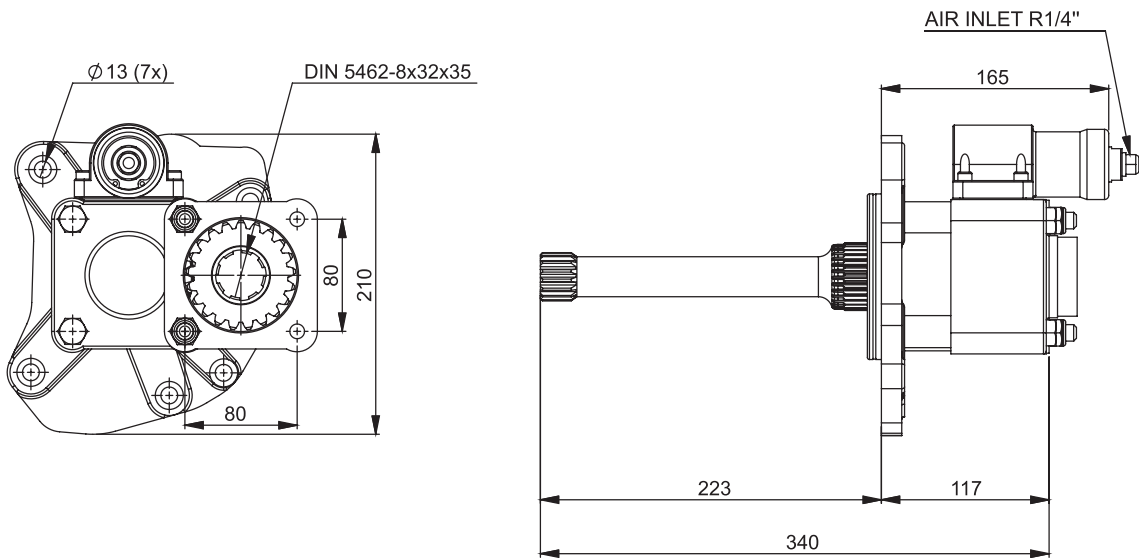
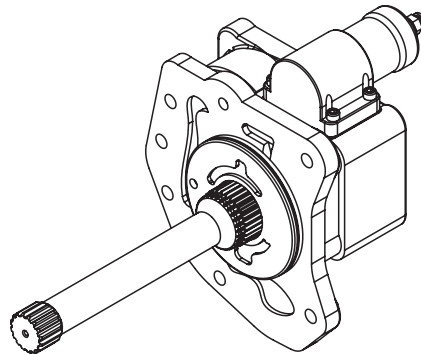
G125, G 131-9, G135, G 141-9, G180, G200, G210, G211, G 211-12, G 211-16, G 221-9, G 230-12, G 230-16, G240, G 240-16, G255, G260, G 260-16, G 280-16, G 281-12 & G 330-12

#### TRUCK MODELS USED

1729 - 1735 - 1827 - 1834 - 1838 - 1929 - 1935 - 2038 - 2429 - 2435 - 2527 - 2531 - 2534 - 2629 - 2631 - 2635 - 2638 - 3229 - 3234 - 3534 - 3535 - 1831 - 1835 - 1840 - 1844 - 1848 - 1850 - 1857 - 1934 - 1938 - 1953 - 2044 - 2050 - 2544 - 2550 - 2650 - 2643 - 2644 - 3031 - 3234 - 3331 - 3335 - 3336 - 3340 - 3235 - 2031 - 2040 - 2648 - 3548 - 3553 - 3557 - 3538 - 2641 - 3244 ACTROS

SKU	TORQUE	POWER (100 rpm)
HYPTO-T-020	24 Kgm 235.5 Nm	16 Hp 12 Kw
SPEED	RATIO	WEIGHT
500 rpm	1/1	10.5 KG
MOUNTING	CONTROL	ROTATION
Rear	Pneumatic	Right - ISO

**MERCEDES AXOR - 2**  
**SKU: HYPTO-T-022**



**GENERAL DATA**

**MAIN GEARBOX**

G125-9, G135, G155-9, G180, G200, G211-9, G240, G255, G260 (11.9-15.9-16.2)  
 G125-16, G135-16, G155-16, G180-16, G200-16, G210-16, G240-16, G255

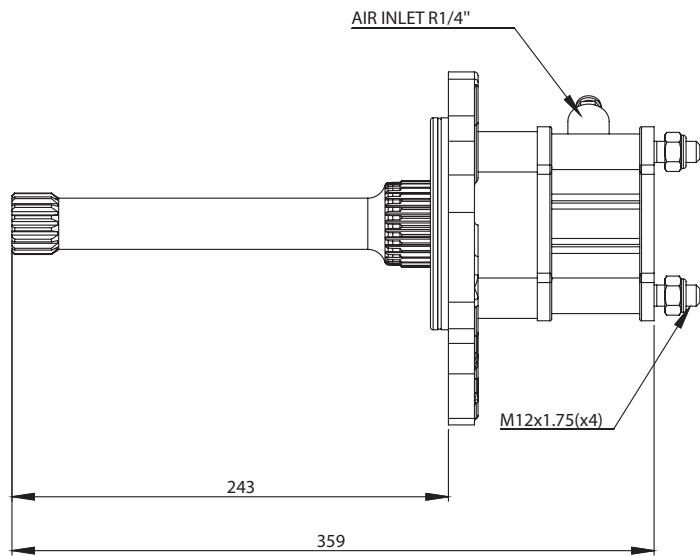
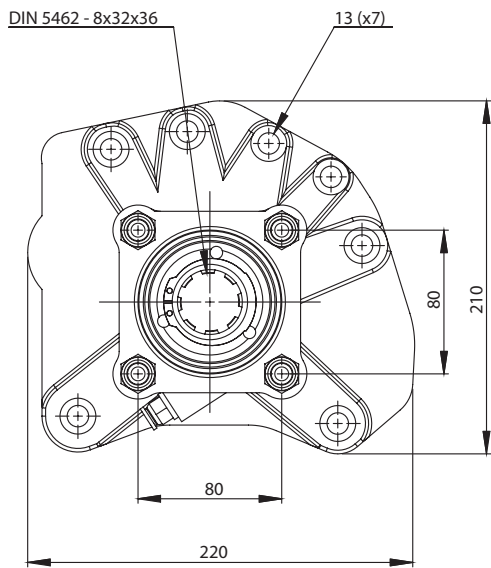
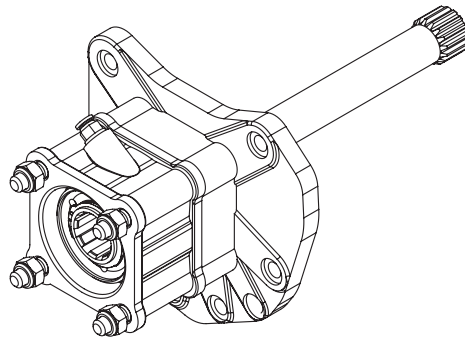
**TRUCK MODELS USED**

1729 - 1735 - 1827 - 1834 - 1838 - 1929 - 1935 - 2038 - 2429 - 2435 - 2527 - 2531 - 2534 - 2629 - 2631 - 2635 - 2638 -  
 3229 - 3234 - 3534 - 3535 - 1831 - 1835 - 1840 - 1844 - 1848 - 1850 - 1857 - 1934 - 1938 - 1953 - 2044 - 2050 - 2544 -  
 2550 - 2650 - 2643 - 2644 - 3031 - 3234 - 3331 - 3335 - 3336 - 3340 - 3235 - 2031 - 2040 - 2648 - 3548 - 3553 - 3557 -  
 3538 - 2641 - 3244 ACTROS

<b>SKU</b>	<b>TORQUE</b>	<b>POWER</b> (100 rpm)
HYPTO-T-022	30 Kgm 295 Nm	57.7 Hp 43 Kw
<b>SPEED</b>	<b>RATIO</b>	<b>WEIGHT</b>
675 rpm	1/1.12	16.6 KG
<b>MOUNTING</b>	<b>CONTROL</b>	<b>ROTATION</b>
Rear	Pneumatic	Left - ISO

# POWER TAKE OFF (PTO)

**MERCEDES G155 - 1 ACTROS**  
**PART NO. 17512138366**



## GENERAL DATA

### MAIN GEARBOX

G125, G 131-9, G135, G 141-9, G180, G200, G210, G211, G 211-12, G 211-16, G 221-9, G 230-12, G 230-16, G240, G 240-16, G255, G260, G 260-16, G 280-16, G 281-12 & G 330-12

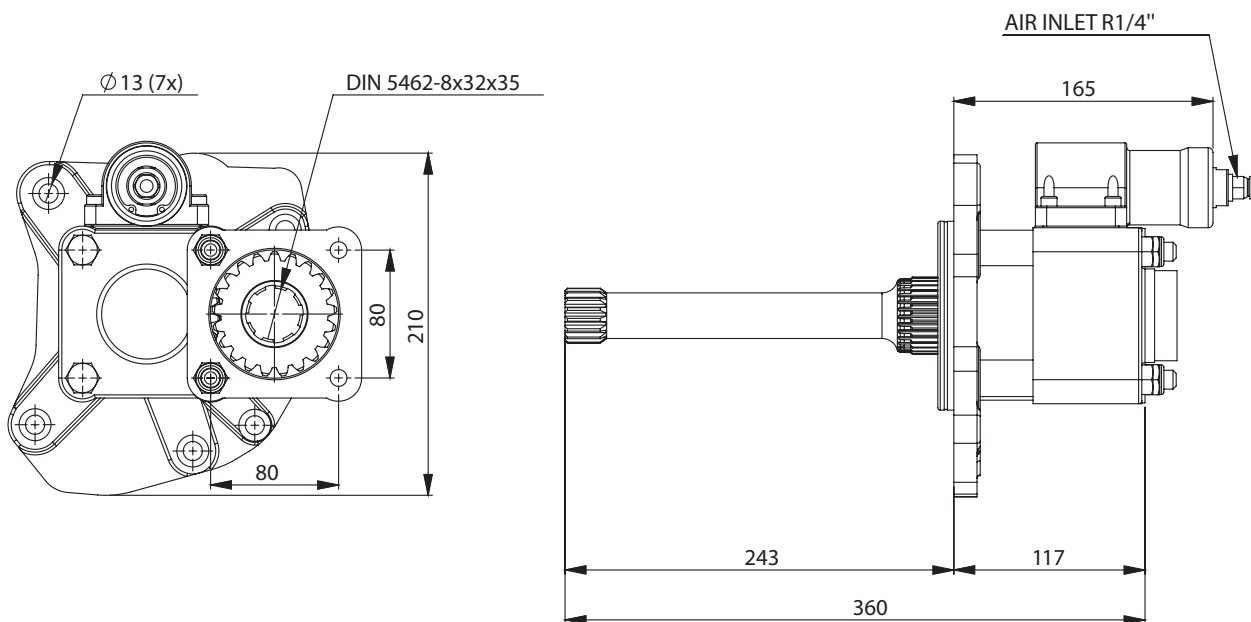
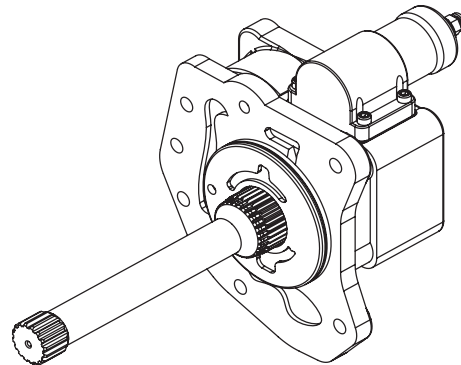
### TRUCK MODELS USED

1729 - 1735 - 1827 - 1834 - 1838 - 1929 - 1935 - 2038 - 2429 - 2435 - 2527 - 2531 - 2534 - 2629 - 2631 - 2635 - 2638 - 3229 - 3234 - 3534 - 3535 - 1831 - 1835 - 1840 - 1844 - 1848 - 1850 - 1857 - 1934 - 1938 - 1953 - 2044 - 2050 - 2544 - 2550 - 2650 - 2643 - 2644 - 3031 - 3234 - 3331 - 3335 - 3336 - 3340 - 3235 - 2031 - 2040 - 2648 - 3548 - 3553 - 3557 - 3538 - 2641 - 3244 ACTROS

<b>PART NO.</b>	<b>TORQUE</b>	<b>POWER (100 rpm)</b>
17512138366	23 Kgm 255 Nm	16 Hp 12 Kw
<b>SPEED</b>	<b>RATIO</b>	<b>WEIGHT</b>
500 rpm	1/1	11 KG
<b>MOUNTING</b>	<b>CONTROL</b>	<b>ROTATION</b>
Rear	Pneumatic	Right - ISO

MERCEDES G155-2 ACTROS

SKU: HYPTO-T-021



GENERAL DATA

MAIN GEARBOX

G125-9, G135, G155-9, G180, G200, G211-9, G240, G255, G260 (11.9-15.9-16.2)  
G125-16, G135-16, G155-16, G180-16, G200-16, G210-16, G240-16, G255

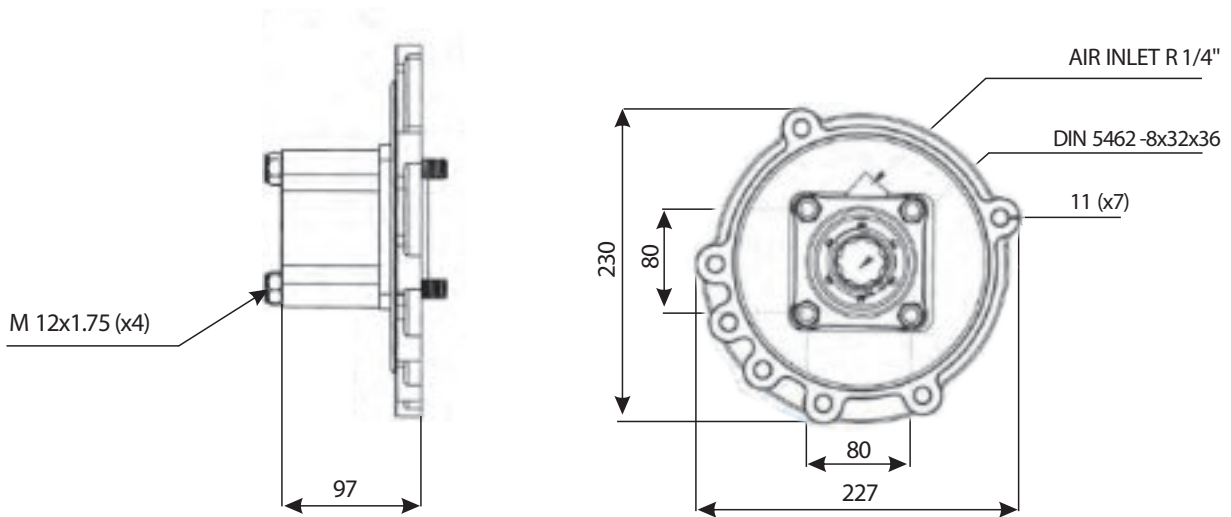
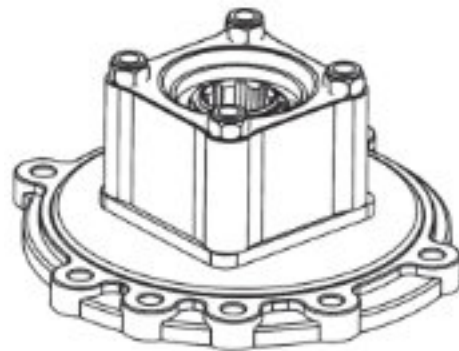
TRUCK MODELS USED

1729 - 1735 - 1827 - 1834 - 1838 - 1929 - 1935 - 2038 - 2429 - 2435 - 2527 - 2531 - 2534 - 2629 - 2631 - 2635 - 2638 -  
3229 - 3234 - 3534 - 3535 - 1831 - 1835 - 1840 - 1844 - 1848 - 1850 - 1857 - 1934 - 1938 - 1953 - 2044 - 2050 - 2544 -  
2550 - 2650 - 2643 - 2644 - 3031 - 3234 - 3331 - 3335 - 3336 - 3340 - 3235 - 2031 - 2040 - 2648 - 3548 - 3553 - 3557 -  
3538 - 2641 - 3244 ACTROS

SKU	TORQUE	POWER (100 rpm)
HYPTO-T-021	28 Kgm 275 Nm	57.7 Hp 43 Kw
SPEED	RATIO	WEIGHT
675 rpm	1/1.12	16.5 KG
MOUNTING	CONTROL	ROTATION
Rear	Pneumatic	Left - ISO

# POWER TAKE OFF (PTO)

MERCEDES G4  
SKU: HYPTO-T-025



## GENERAL DATA

### MAIN GEARBOX

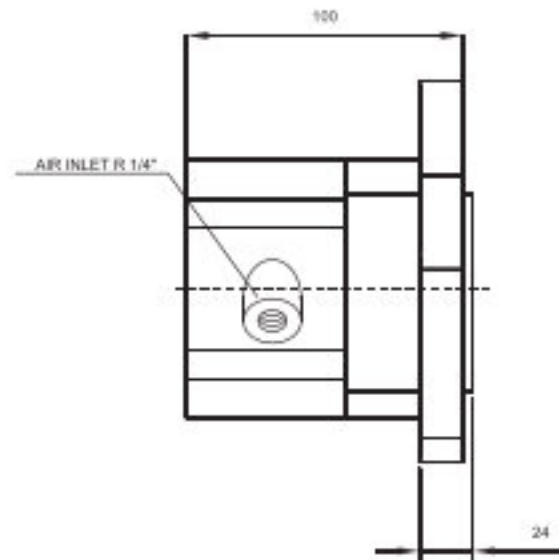
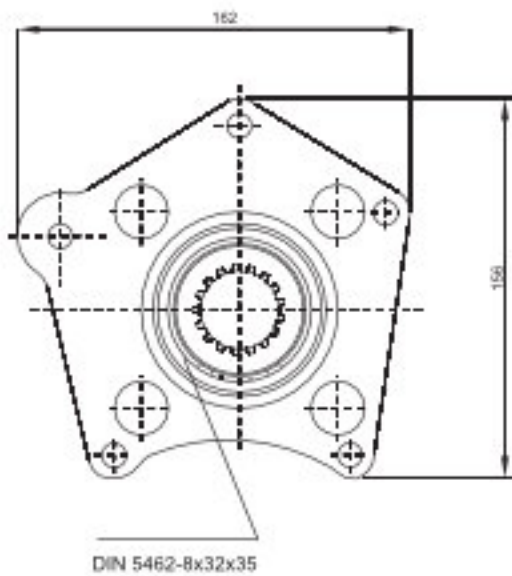
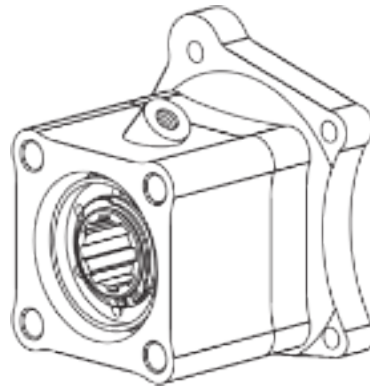
G4-GV/ 4 65, 90, 95, 110, 125, 135, 155, 180

### TRUCK MODELS USED

1222-1224-1417-1419-1617-1619-1620-1722-1733-1817-1820-1821-1827-1831-1922-2232-2517-2521-2527-3027-1424-1628-1820-1824-1929-1935-1948-2224-2222-2426-2524-2622-2629-2635  
MERCEDES BENZ

SKU	TORQUE	POWER (100 rpm)
HYPTO-T-025	22.5 Kgm 219.7 Nm	16 Hp 12 Kw
SPEED	RATIO	WEIGHT
500 rpm	1/1	6 KG
MOUNTING	CONTROL	ROTATION
Rear	Pneumatic	Right - ISO

MERCEDES 352-1  
PART NO. 17515138366



**GENERAL DATA**

**MAIN GEARBOX**

G3 / 32, 36, 40, 45, 50, 55, 60, 61.

**TRUCK MODELS USED**

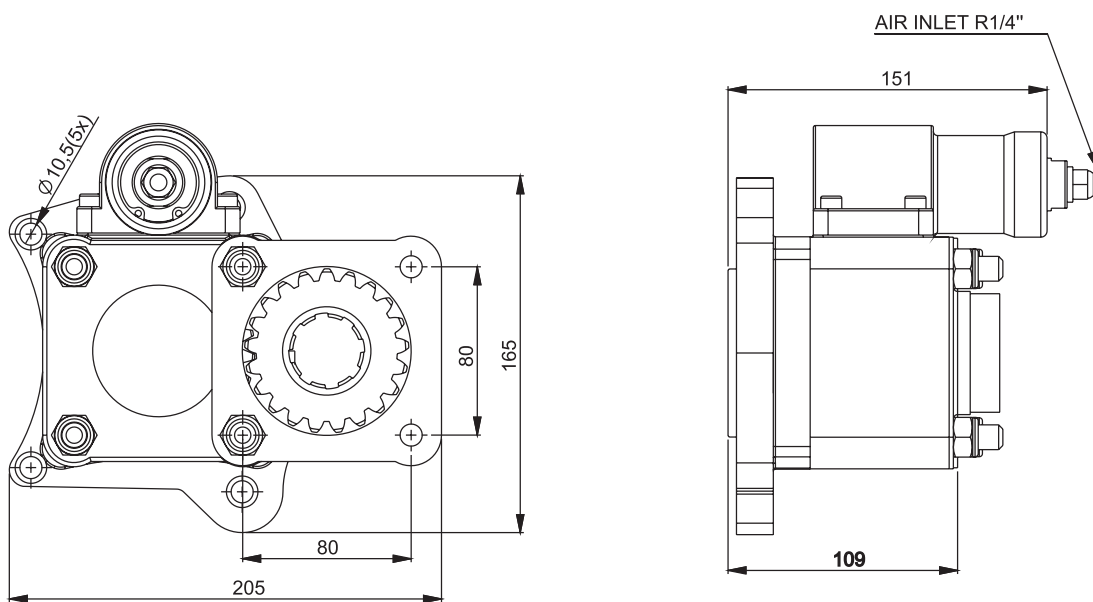
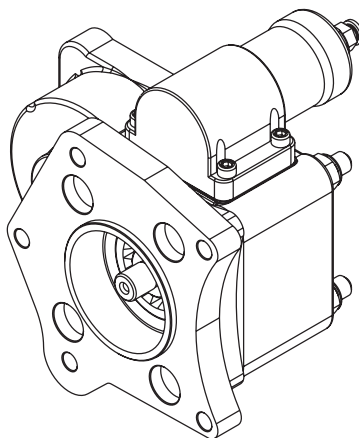
315 - 352 - 362 - 383 - 609 - 710 - 712 - 809 - 812 - 813 - 814 - 817 - 913 - 1017 - 1113 - 1114 - 1213 - 1216 - 1318 - 1618

<b>PART NO.</b>	<b>TORQUE</b>	<b>POWER</b> (100 rpm)
17515138366	23 Kgm 225 Nm	29.7 Hp 21.9 Kw
<b>SPEED</b>	<b>RATIO</b>	<b>WEIGHT</b>
1000 rpm	1/1	5.5 KG
<b>MOUNTING</b>	<b>CONTROL</b>	<b>ROTATION</b>
Rear	Pneumatic	Right - ISO



# POWER TAKE OFF (PTO)

MERCEDES 352-2  
PART NO. 17515638399



## GENERAL DATA

### MAIN GEARBOX

G3 / 32, 36, 40, 45, 50, 55, 60, 61

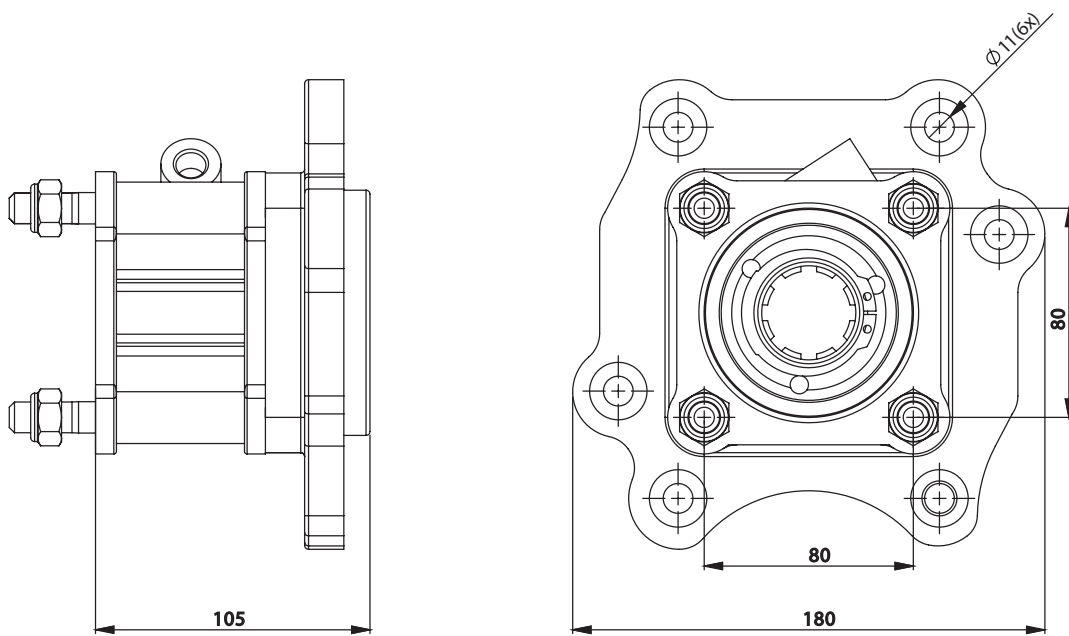
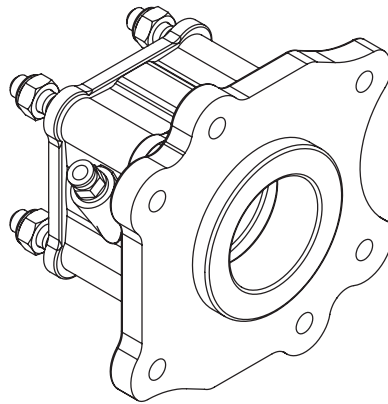
### TRUCK MODELS USED

315 - 352 - 362 - 383 - 609 - 710 - 712 - 809 - 812 - 813 - 814 - 817 - 913 - 1017 - 1113 - 1114 - 1213 - 1216 - 1318 - 1618

<b>PART NO.</b>	<b>TORQUE</b>	<b>POWER (100 rpm)</b>
17515638399	22.4 Kgm 219.7 Nm	18.5 Hp 13.8 Kw
<b>SPEED</b>	<b>RATIO</b>	<b>WEIGHT</b>
600 rpm	1/1. 12	10 KG
<b>MOUNTING</b>	<b>CONTROL</b>	<b>ROTATION</b>
Rear	Pneumatic	Left - UNI

MERCEDES ATEGO - 1 / 6 HOLE

SKU: HYPTO-T-026



GENERAL DATA

MAIN GEARBOX

G56-6 (6.291)

TRUCK MODELS USED

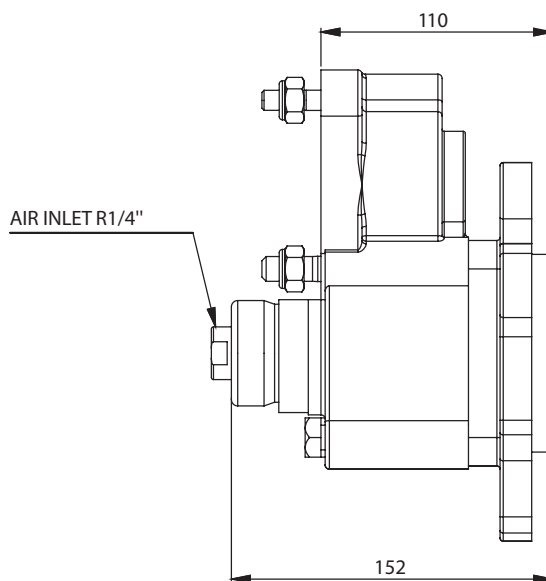
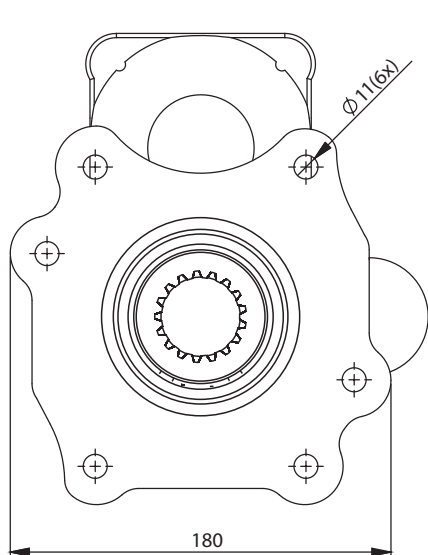
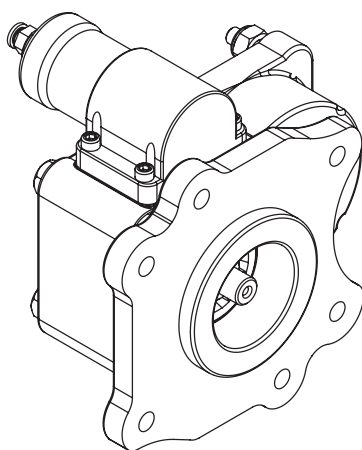
614 - 814 - 815 - 817 - 818 - 823 - 925 - 1017 - 1328 - 1215 - 1217 - 1223 - 1225 - 1317 - 1323 - 1328 - 1517 - 1523 - 1618 - 1623 - 1823 ATEGO

PART NO.	TORQUE	POWER (100 rpm)
HYPTO-T-026	26.5 Kgm 265.5 Nm	-- Hp 14.9 Kw
SPEED	RATIO	WEIGHT
650 rpm	1/1	7 KG
MOUNTING	CONTROL	ROTATION
Rear	Pneumatic	Left - ISO

# POWER TAKE OFF (PTO)

## MERCEDES ATEGO-2 / 6 HOLE

SKU: HYPTO-T-027



### GENERAL DATA

#### MAIN GEARBOX

G56-6 (6.291)

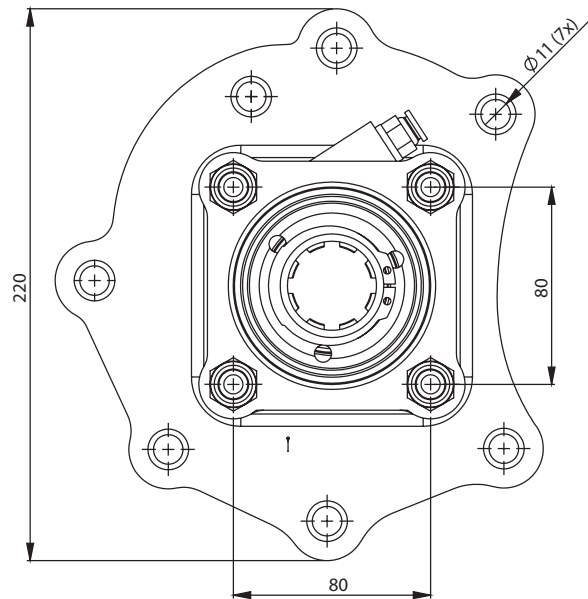
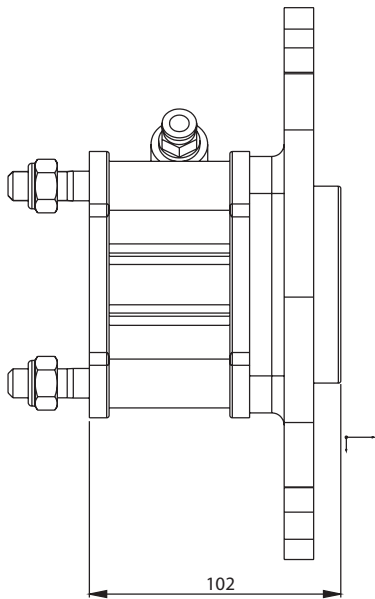
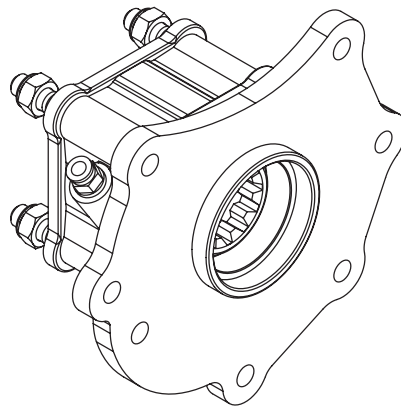
#### TRUCK MODELS USED

614 - 814 - 815 - 817 - 818 - 823 - 925 - 1017 - 1328 - 1215 - 1217 - 1223 - 1225 - 1317 - 1323 - 1328 - 1517 - 1523 - 1618 - 1623 - 1823 ATEGO

SKU	TORQUE	POWER (100 rpm)
HYPTO-T-027	26.5 Kgm 265.5 Nm	-- Hp 14.9 Kw
SPEED	RATIO	WEIGHT
650 rpm	--	11 KG
MOUNTING	CONTROL	PTO ROTATON
Rear	Pneumatic	Left - ISO

MERCEDES ATEGO-1 / 7 HOLE

SKU: HYPTO-T-010



GENERAL DATA

MAIN GEARBOX

G 60-6 (9.20) / G85-6 (6.70)

TRUCK MODELS USED

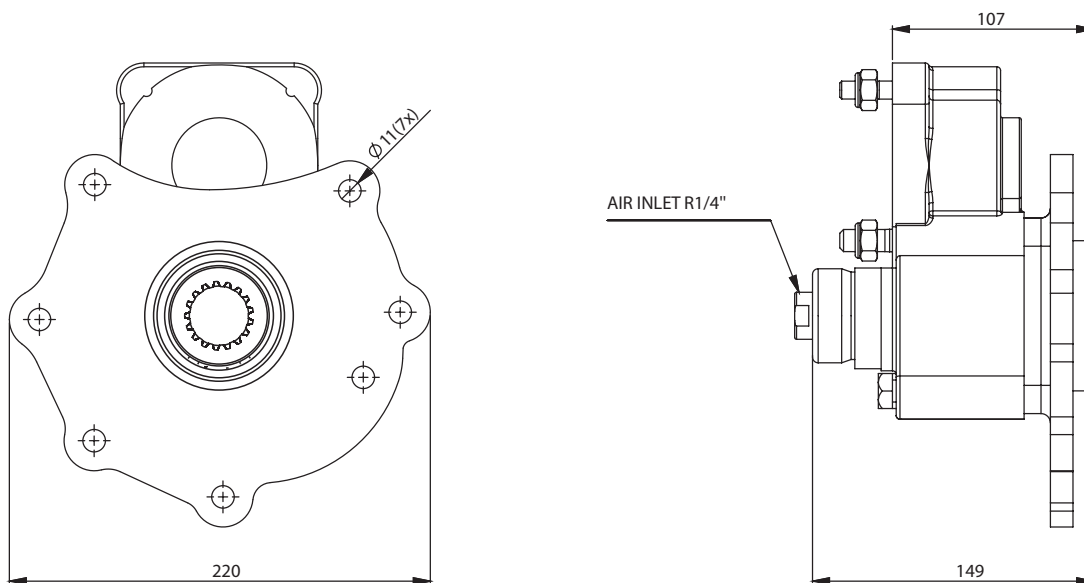
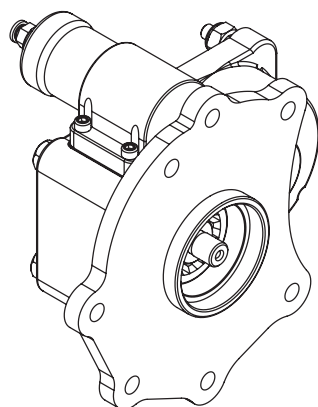
614 - 814 - 815 - 817 - 818 - 823 - 925 - 1017 - 1328 - 1215 - 1217 - 1223 - 1225 - 1317 - 1323 - 1328 - 1517 - 1523 - 1618 - 1623 - 1823 ATEGO

PART NO.	TORQUE	POWER (100 rpm)
	23.5 Kgm 230.5 Nm	- Hp 12 Kw
SPEED	RATIO	WEIGHT
500 rpm	1/1	8 KG
MOUNTING	CONTROL	PTO ROTATON
Rear	Pneumatic	Right - ISO

# POWER TAKE OFF (PTO)

## MERCEDES ATEGO-2 / 7 HOLE

PART NO. 17516738399



### GENERAL DATA

#### MAIN GEARBOX

G 60-6 (9.20) / G85-6 (6.70).

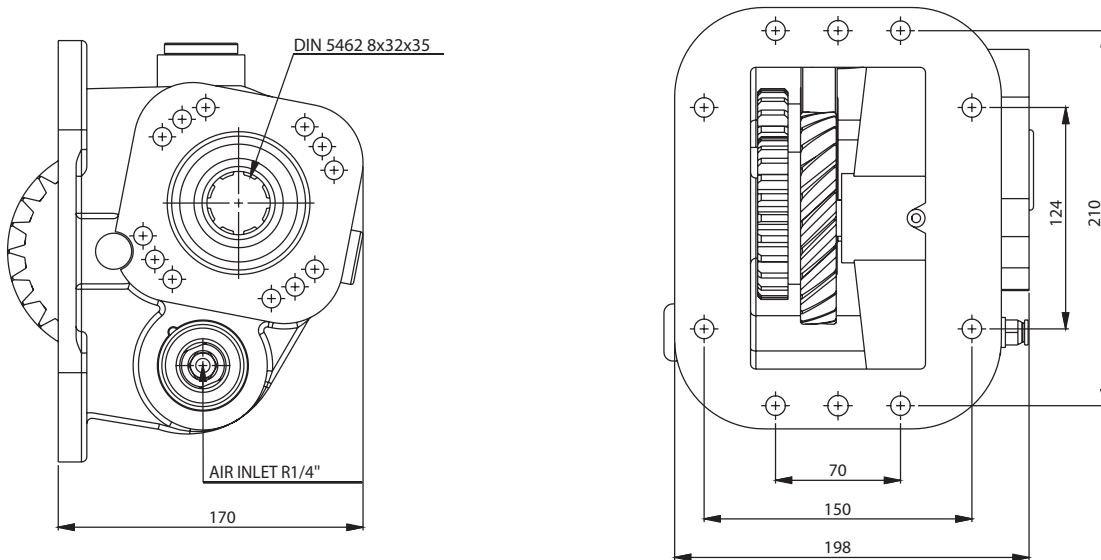
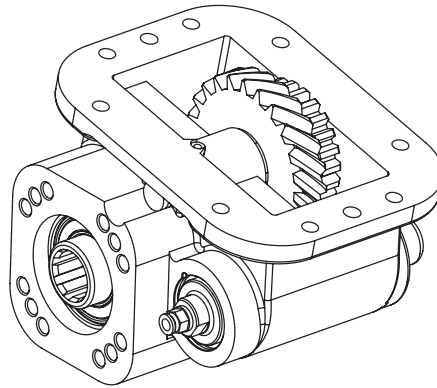
#### TRUCK MODELS USED

614 - 814 - 815 - 817 - 818 - 823 - 925 - 1017 - 1328 - 1215 - 1217 - 1223 - 1225 - 1317 - 1323 - 1328 - 1517 - 1523 - 1618 - 1623 - 1823 ATEGO

<b>PART NO.</b>	<b>TORQUE</b>	<b>POWER (100 rpm)</b>
17516738399	26.5 Kgm 265.5 Nm	- Hp 14.9 Kw
<b>SPEED</b>	<b>RATIO</b>	<b>WEIGHT</b>
650 rpm		12 KG
<b>MOUNTING</b>	<b>CONTROL</b>	<b>ROTATION</b>
Rear	Pneumatic	Left - ISO

SCANIA GR 900

SKU: HYPTO-T-024



GENERAL DATA

MAIN GEARBOX

GR 900 / GRH 900

TRUCK MODELS USED

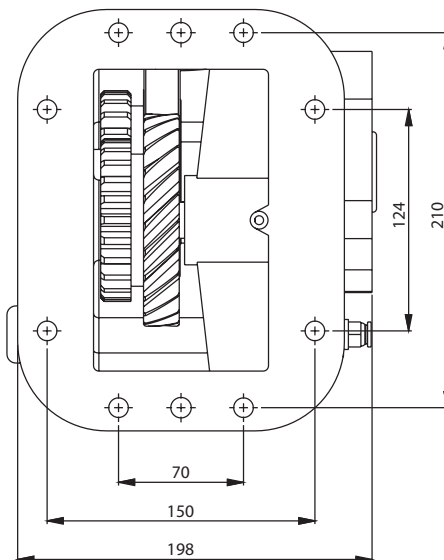
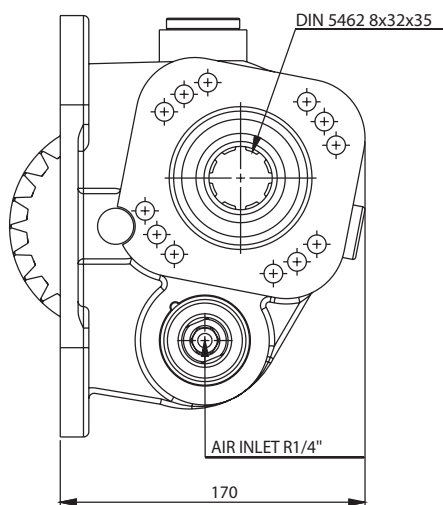
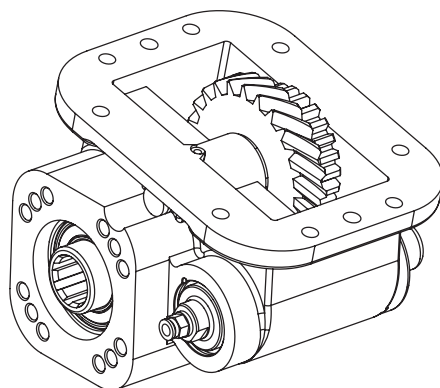
94 C 310 - 124 C 360-R 124 G 360-124 G 360-143H450CV- 143M400CV - 260H-143H - P113M P114- GA380 - 114P - 124R - 113P - 114R - 113H 360 SCANIA

SKU	TORQUE	POWER (100 rpm)
HYPTO-T-024	25 Kgm 245 Nm	45.3 Hp 33.8 Kw
SPEED	RATIO	WEIGHT
1065 rpm	1/0.78	22.5 KG
MOUNTING	CONTROL	ROTATION
Right - Side	Pneumatic	Right - ISO

# POWER TAKE OFF (PTO)

SCANIA GRS 900

SKU: HYPTO-T-019



## GENERAL DATA

### MAIN GEARBOX

GRS 900 / GRS 890 / GRS 920

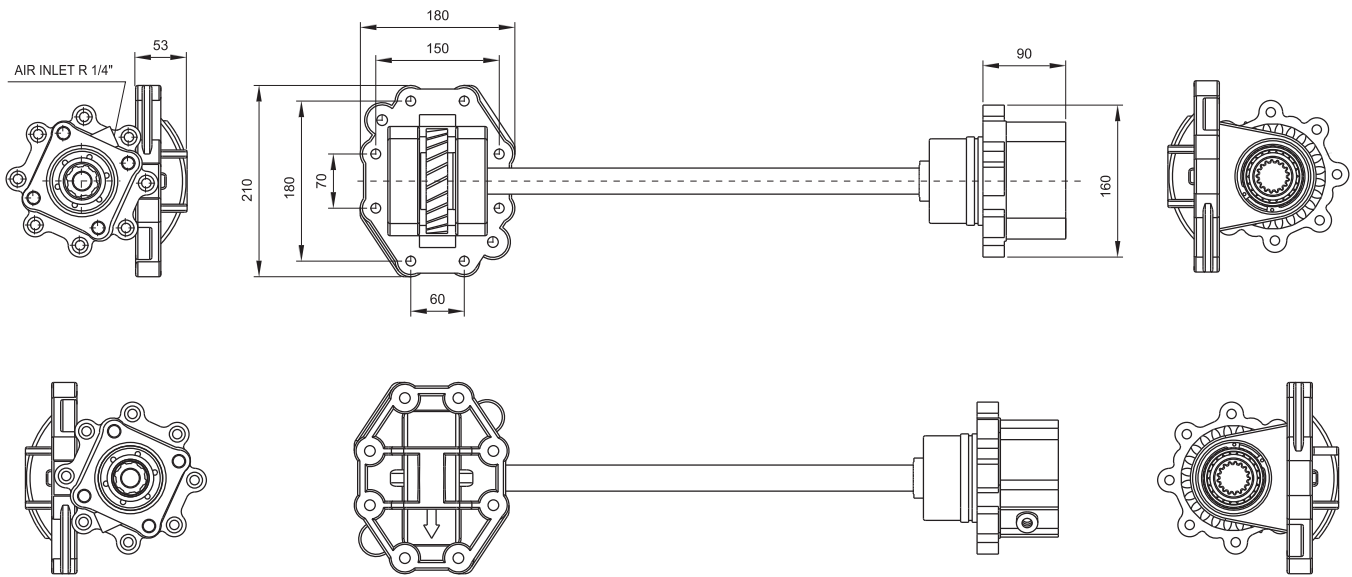
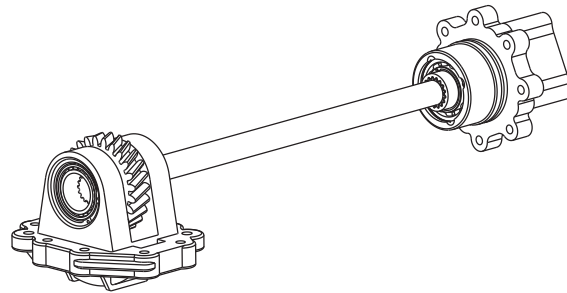
### TRUCK MODELS USED

124 G 420-113-124 L 400-144 L 530-124 LA 420-144 LA 460 - 144 LA 530-R124 LA 420 R 124 - GA  
420-143H-143M-143,400-143,450 - 143,500-R580-R124GA / CB-R164 GA SCANIA

SKU	TORQUE	POWER (100 rpm)
HYPTO-T-019	25 Kgm 245 Nm	45.3 Hp 33.8 Kw
SPEED	RATIO	WEIGHT
1065 rpm	1/0.78	22.5 KG
MOUNTING	CONTROL	ROTATION
Right - Side	Pneumatic	Right - ISO

Hydraulic PTO for Scania GR / GRS 895, 905 Gearbox

SKU: HYPTO-T-018



GENERAL DATA

MAIN GEARBOX

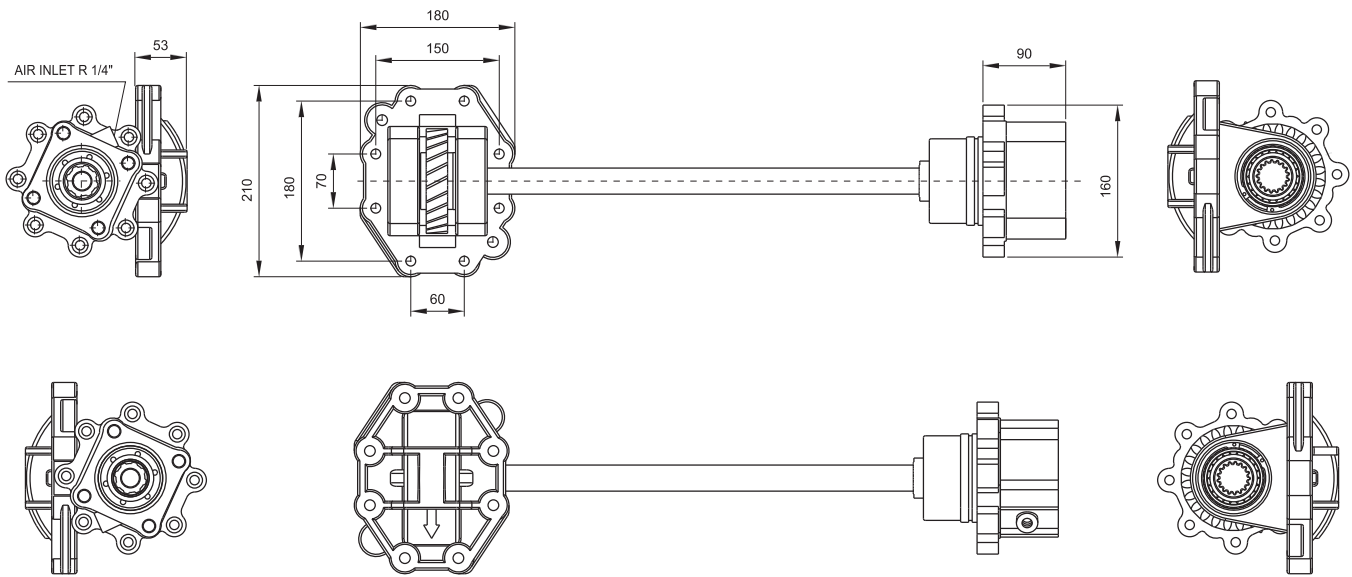
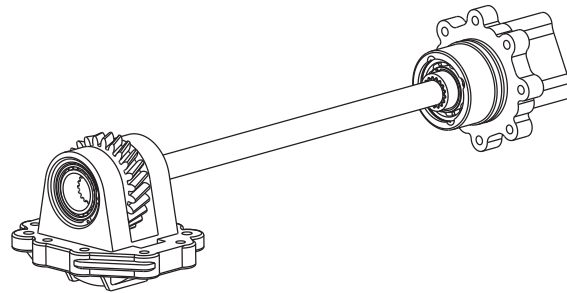
TRUCK MODELS USED

SKU	TORQUE	POWER (100 rpm)
HYPTO-T-018	22.5 Kgm 436 Nm	56.8 Hp 42.4 Kw
SPEED	RATIO	WEIGHT
1250 rpm	1/1	22.5 KG
MOUNTING	CONTROL	ROTATION
Rear	Pneumatic	Left - Side



Hydraulic PTO for Scania GRSO 905

SKU: HYPTO-T-023



GENERAL DATA

MAIN GEARBOX

GR 905 / GRS 905

TRUCK MODELS USED

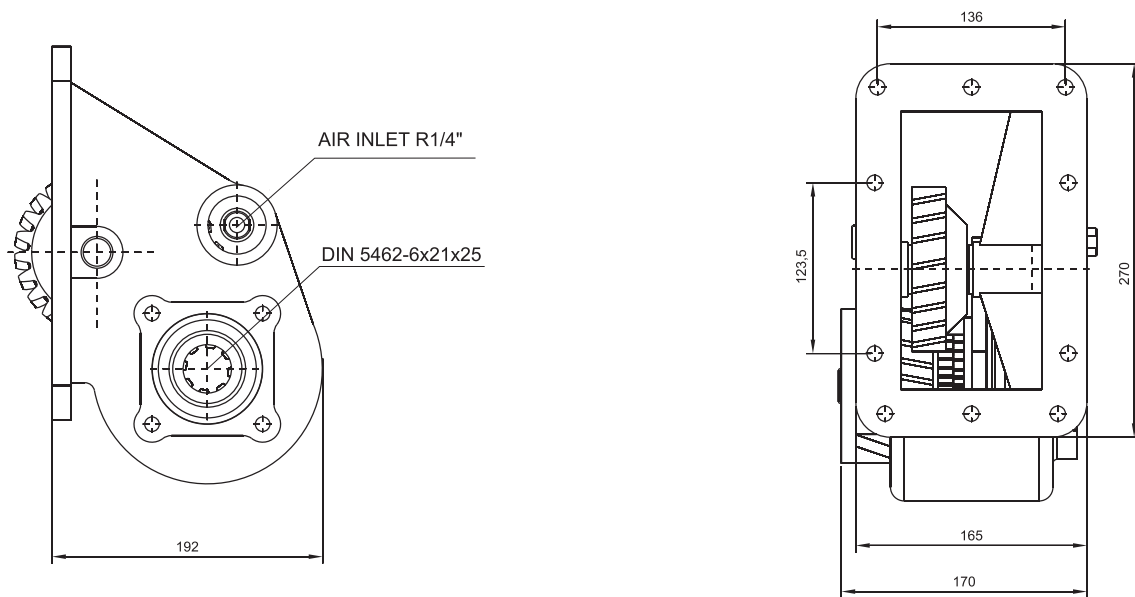
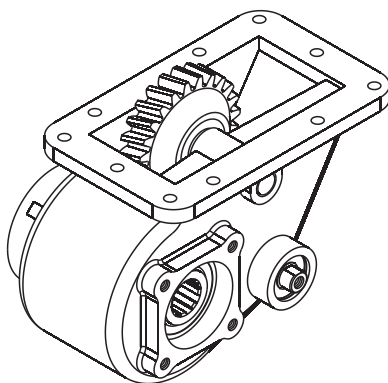
R420 - G420 EURO 5 SCANIA

SKU	TORQUE	POWER (100 rpm)
HYPTO-T-023	22.5 Kgm 436 Nm	56.8 Hp 42.4 Kw
SPEED	RATIO	WEIGHT
1250 rpm	1/1	22.5 KG
MOUNTING	CONTROL	ROTATION
Rear	Pneumatic	Left - Side

# POWER TAKE OFF (PTO)

SCANIA GR 871

PART NO. 17544128366



## GENERAL DATA

### MAIN GEARBOX

GR 870 - 871 SCANIA

### TRUCK MODELS USED

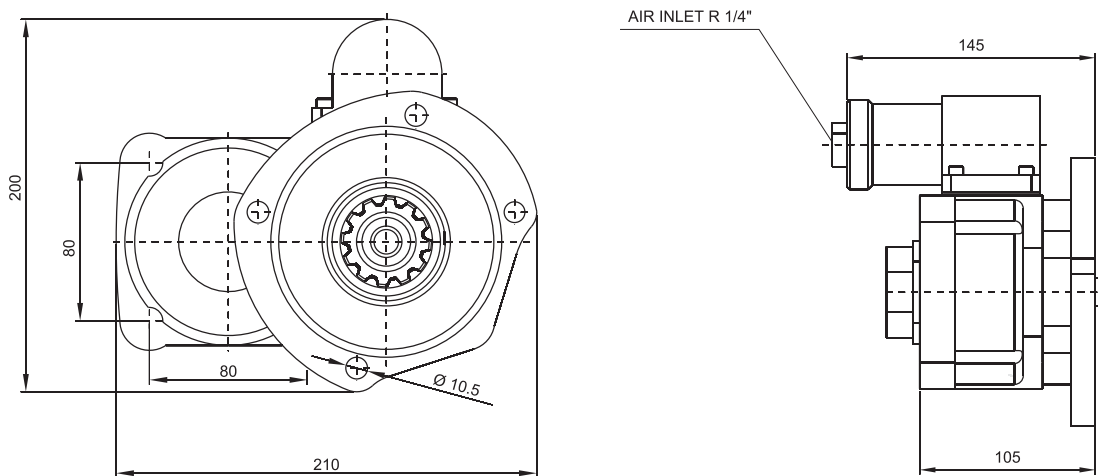
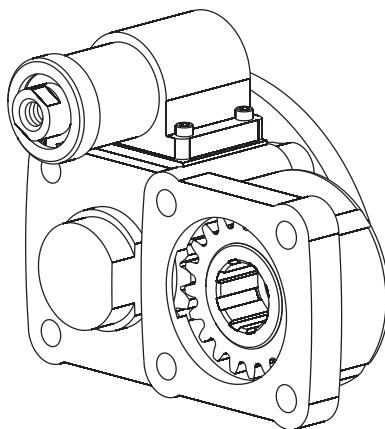
P92 - 93 - 111 - 112C - 113R - 114H - 142M - 144L - 93H - 280R - 113M - SCANIA

<b>PART NO.</b>	<b>TORQUE</b>	<b>POWER (100 rpm)</b>
17544128366	29 Kgm 284 Nm	37.5 Hp 27.6 Kw
<b>SPEED</b>	<b>RATIO</b>	<b>WEIGHT</b>
1000 rpm	1/0.78	22.5 KG
<b>MOUNTING</b>	<b>CONTROL</b>	<b>ROTATION</b>
Right Side	Pneumatic	Right - ISO

# POWER TAKE OFF (PTO)

VOLVO R5-2

PART NO. 17611638399



## GENERAL DATA

### MAIN GEARBOX

R 51-R/ SR 52 / R52

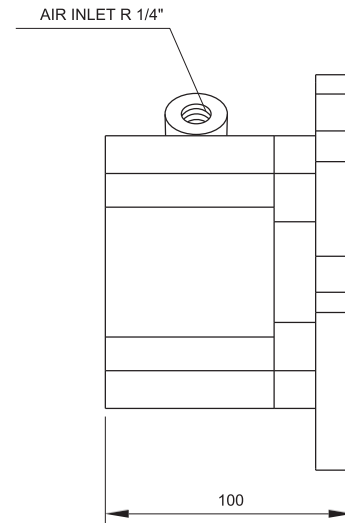
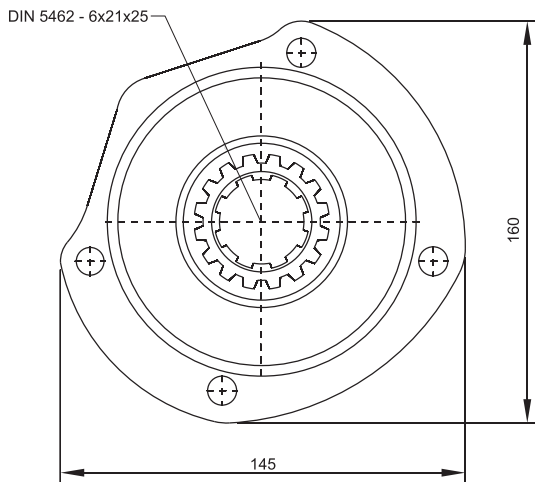
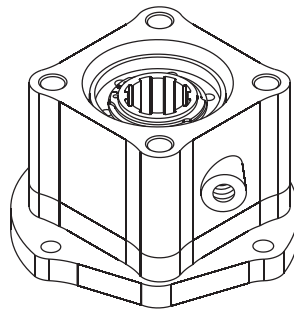
### TRUCK MODELS USED

VOLVO F 0-F 86-F 88-F 1233

<b>PART NO.</b>	<b>TORQUE</b>	<b>POWER (100 rpm)</b>
17611638399	24 Kgm 235.5 Nm	22.3 Hp
<b>SPEED</b>	<b>RATIO</b>	<b>WEIGHT</b>
675 rpm	1/1.2	10 KG
<b>MOUNTING</b>	<b>CONTROL</b>	<b>ROTATION</b>
Rear	Pneumatic	Left - UNI

VOLVO R6-1

PART NO. 17612138366



**GENERAL DATA**

**MAIN GEARBOX**

R 62-SR61-R62/MR 62 B

**TRUCK MODELS USED**

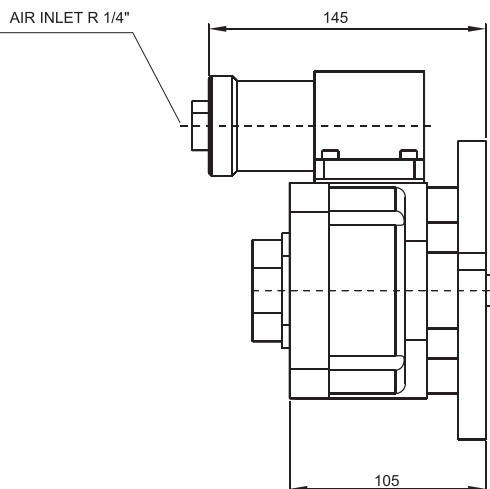
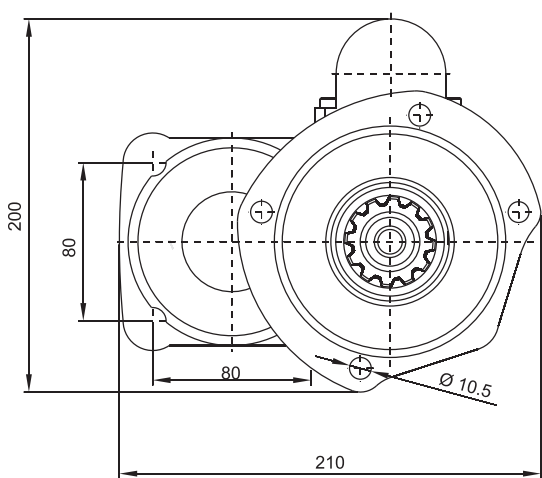
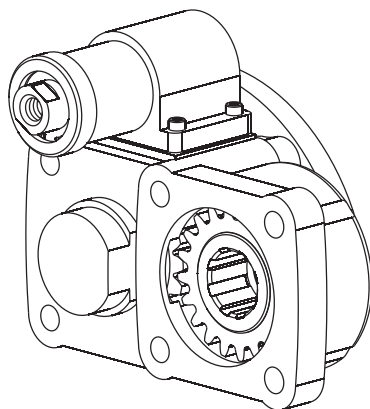
F 7-F 10-F 12-F 88-F 89-F 1020-F 1225-N 10-N 12 VOLVO

<b>PART NO.</b> 17612138366	<b>TORQUE</b> 25 Kgm 245 Nm	<b>POWER (100 rpm)</b> 26.5 Hp 19.8 Kw
<b>SPEED</b> 780 rpm	<b>RATIO</b> 1/1.2	<b>WEIGHT</b> 6 KG
<b>MOUNTING</b> Rear	<b>CONTROL</b> Pneumatic	<b>ROTATION</b> Right - ISO

# POWER TAKE OFF (PTO)

VOLVO R6-2

PART NO. 17612638399



## GENERAL DATA

### MAIN GEARBOX

R62-SR61-R62 / MR 62 B

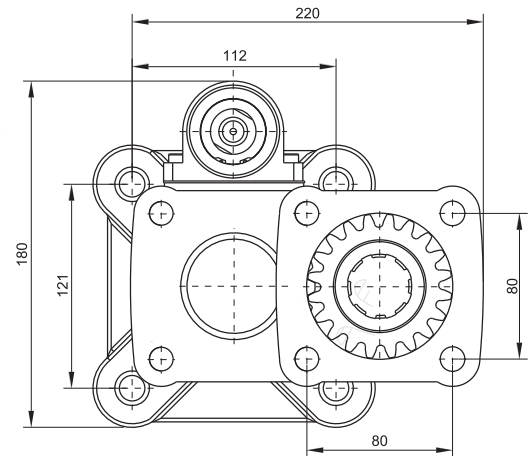
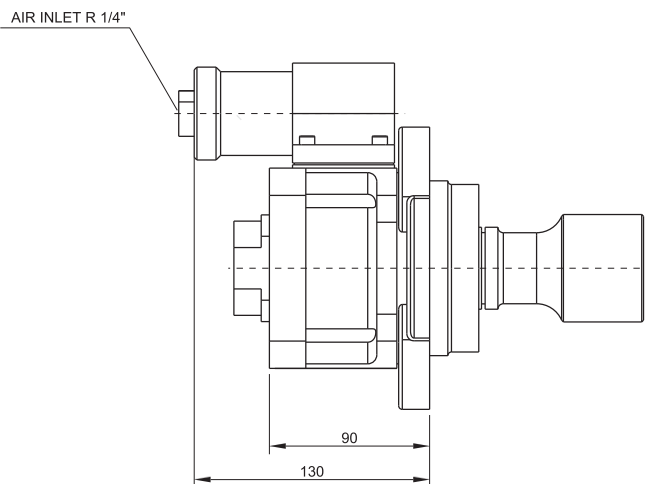
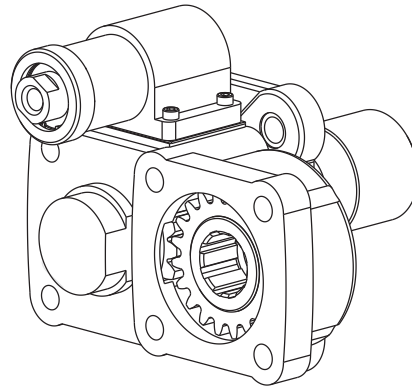
### TRUCK MODELS USED

F 7-F 10-F 12-F 88-F 89-F 1020-F 1225-N 10-N 12 VOLVO

<b>PART NO.</b>	<b>TORQUE</b>	<b>POWER (100 rpm)</b>
17612638399	24 Kg 235.5 Nm	22.3 Hp 16.6 Kw
<b>SPEED</b>	<b>RATIO</b>	<b>WEIGHT</b>
675 rpm	1/1.2	10 KG
<b>MOUNTING</b>	<b>CONTROL</b>	<b>ROTATION</b>
Rear	Pneumatic	Left - ISO

VOLVO SR70-2

PART NO. 17613638399



GENERAL DATA

MAIN GEARBOX

SR/R 70-72

TRUCK MODELS USED

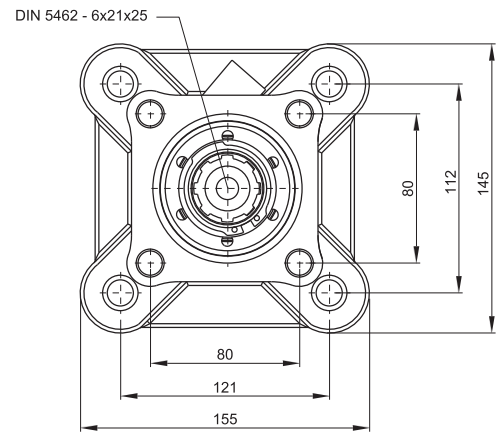
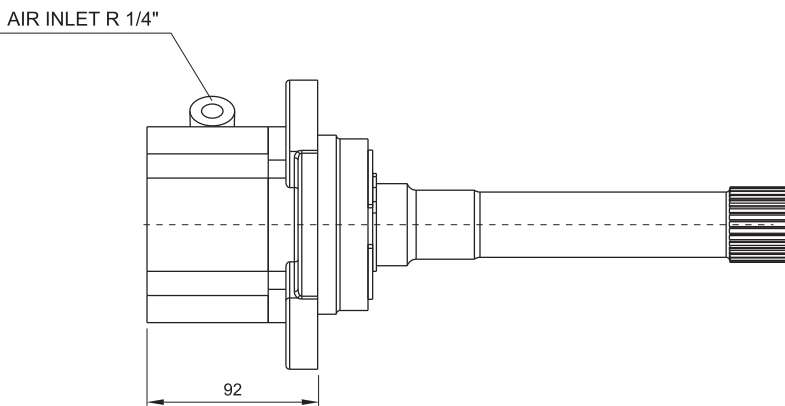
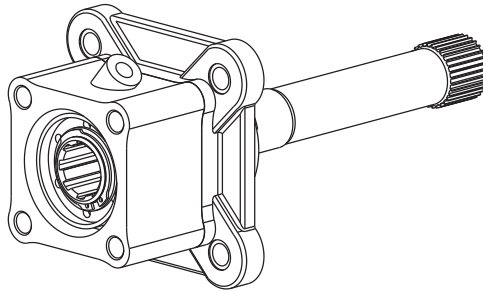
FL7 - FL10 - F10 - F12 - N12 - N10 - NL12 VOLVO

<b>PART NO.</b>	<b>TORQUE</b>	<b>POWER (100 rpm)</b>
17613638399	24 Kgm 235.4 Nm	30.6 Hp 22.9 Kw
<b>SPEED</b>	<b>RATIO</b>	<b>WEIGHT</b>
1000 rpm	1/1.2	12.5 KG
<b>MOUNTING</b>	<b>CONTROL</b>	<b>ROTATION</b>
Rear	Pneumatic	Left - ISO

# POWER TAKE OFF (PTO)

## Hydraulic PTO for Volvo F FL FM FH Series Up to Euro 3

SKU: HYPTO-T-009



### GENERAL DATA

#### MAIN GEARBOX

Volvo R/SR 1000-1400-1700-1900-2000 and SRO 2400 / Volvo VT 2009 B (9 Speed Manual)  
 Volvo VT 2412 B (12 Speed I-Shift Gearbox) / Volvo VT 2014 B (14 Speed Manual Gearbox)  
 Volvo VT 2214 B (14 Speed Manual Gearbox) / Volvo VT 2514 B (14 Speed Manual Gearbox)

#### TRUCK MODELS USED

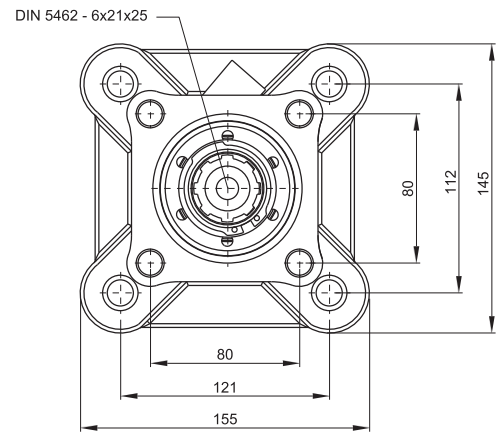
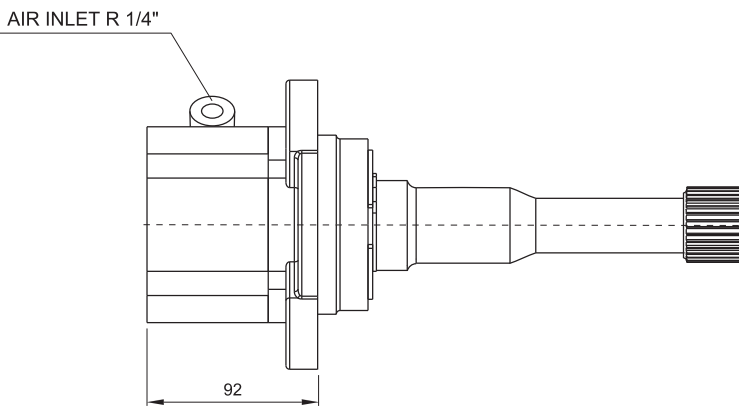
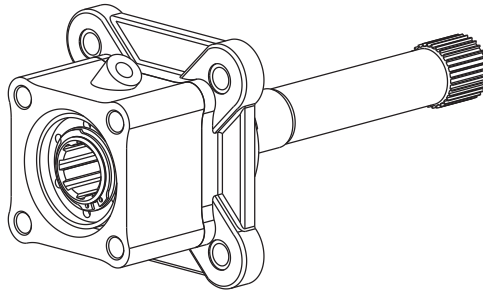
FL7, FM7, FM9, F10, F12, FM12, FH12, F16

SKU	TORQUE	POWER (100 rpm)
HYPTO-T-009	25 Kgm 245 Nm	22.7 Hp 16.9 Kw
SPEED	RATIO	WEIGHT
450 rpm	1/1	9 KG
MOUNTING	CONTROL	ROTATION
Rear	Pneumatic	Right - ISO

# POWER TAKE OFF (PTO)

## Hydraulic PTO Volvo FM FH Series Euro 4, 5, 6

SKU: HYPTO-T-011



### GENERAL DATA

#### MAIN GEARBOX

AT2412 C I-Shift (Semi Auto) / AT2412 D I-Shift (Semi Auto)  
 AT2512 E I-Shift (Semi Auto) / AT2612 E I-Shift (Semi Auto)  
 AT2612 B I-Shift (Semi Auto)

#### TRUCK MODELS USED

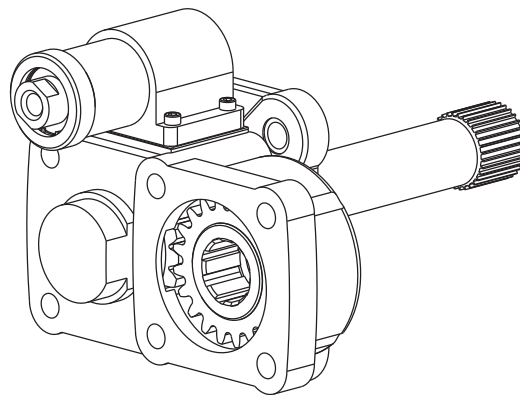
Volvo FH/FM13 Euro 4 (Version 2)  
 Volvo FH/FM13 Euro 5 (Version 3)  
 Volvo FH/FM13 Euro 6 (Version 4)

SKU	TORQUE	POWER (100 rpm)
HYPTO-T-011	25 Kgm 245 Nm	22.7 Hp 16.9 Kw
SPEED	RATIO	WEIGHT
450 rpm	1/1	9 KG
MOUNTING	CONTROL	ROTATION
Rear	Pneumatic	Right - ISO

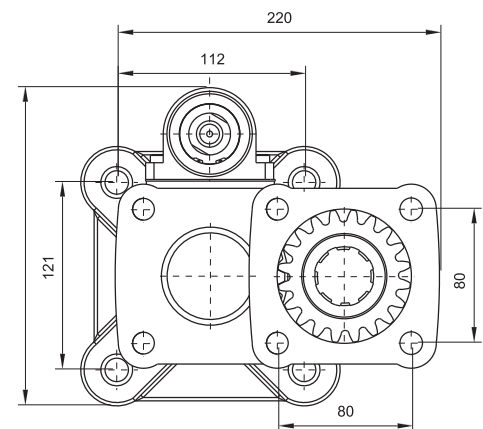
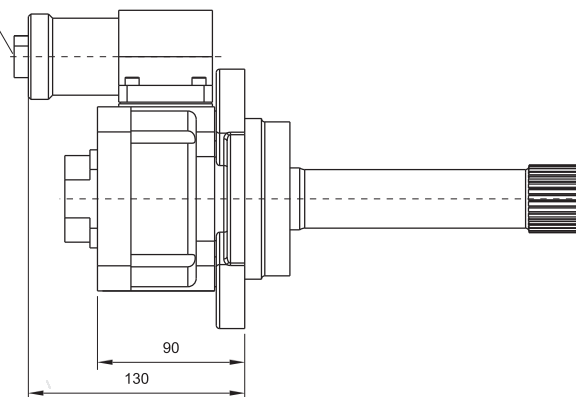


VOLVO 1700-2 ISO

PART NO. 17614638399



AIR INLET R 1/4"



**GENERAL DATA**

**MAIN GEARBOX**

SR/R 1000-1400-1700-1900-2000-SRO 2400

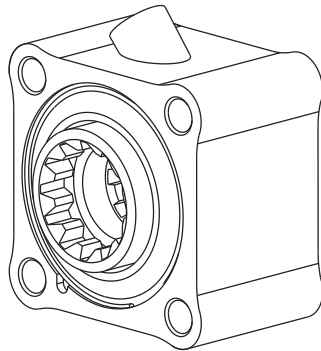
**TRUCK MODELS USED**

FL 10 320-NL 12-FH 16 520-FH 12 420-FM 12-FH 16-FM 10-FM12 VOLVO  
 FL 616-FL 7-F 10-FL 10-F 12-F 16-N 10-N 12-FL 7-NL 12-F 16

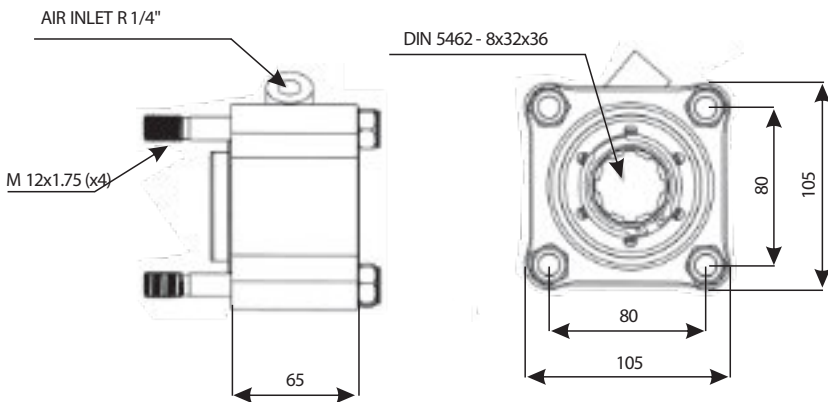
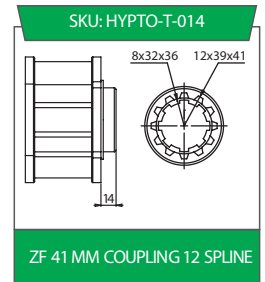
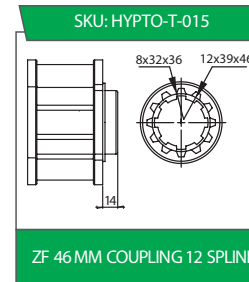
<b>PART NO.</b>	<b>TORQUE</b>	<b>POWER (100 rpm)</b>
17614638399	24 Kgm 235.5 Nm	22.5 Hp 16.8 Kw
<b>SPEED</b>	<b>RATIO</b>	<b>WEIGHT</b>
682 rpm	1/1.2	13.5 KG
<b>MOUNTING</b>	<b>CONTROL</b>	<b>ROTATION</b>
Rear	Pneumatic	Left - UNI

ZF

SKU: HYPTO-T-015 / SKU: HYPTO-T-014



COUPLING OPTIONS



GENERAL DATA

MAIN GEARBOX

ZF16S251-221-151-150-130 ZF S5/AK/65-120-111-110-92 GP ZF S5/AK/65-90-80-70-66-65-55-50-42-36-35  
 ECONOMIT 9575-95109-16S109 - ZF NEW ECOSPLIT 16S1620TD-16S1820TO - 18S1820TD-16S2220TD -  
 16S220TO - 16S2520TO - 16S2023TDL

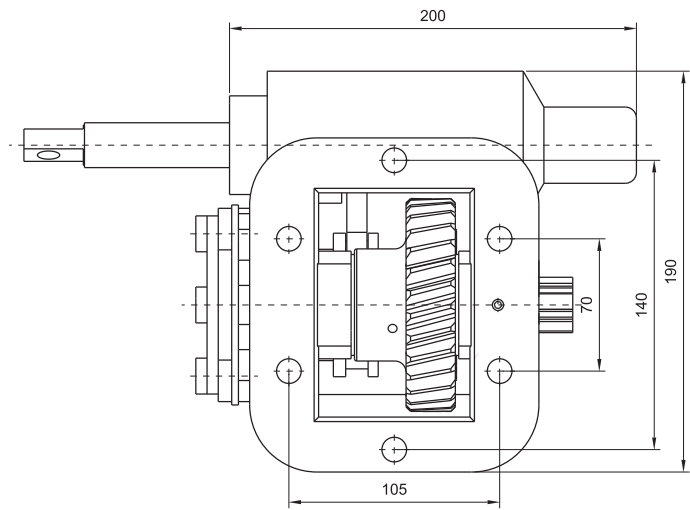
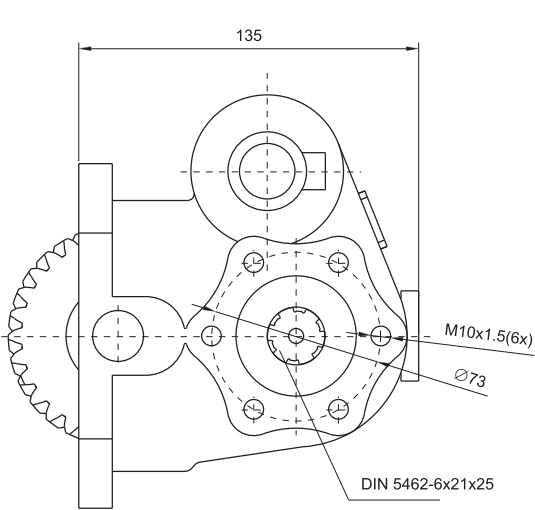
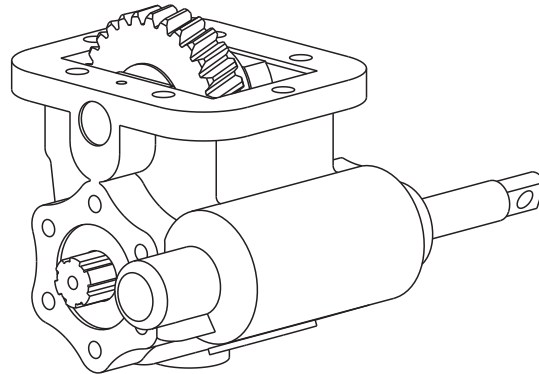
TRUCK MODELS USED

MAN / MERCEDES / BMC PROFESYONEL / FORD CARGO / CHRYSLER HINO / DODGE / FARGO / IVECO  
 / DAF / DAEWOO / RENAULT

SKU	TORQUE	POWER (100 rpm)
HYPTO-T-014	48.9 Kgm	34.5 Hp
HYPTO-T-015	479.5 Nm	25.7 Kw
SPEED	RATIO	WEIGHT
513 rpm	1/1	4 KG
MOUNTING	CONTROL	ROTATION
Rear	Pneumatic	Right - ISO

ZF - MB 800 SIDE

PART NO. 17524127166



GENERAL DATA

MAIN GEARBOX

ZF ECOLITE S5 - 42 (5.72)

TRUCK MODELS USED

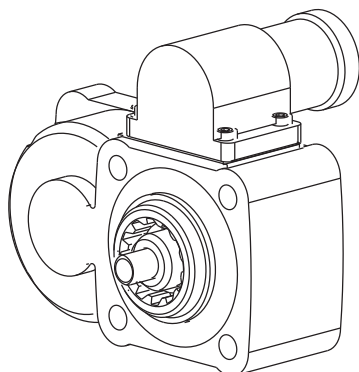
8.150 - 8.153 - 10.153 - 10.163 - 10.185 MAN / MB 800 - 1215 - 1517 - ATEGO MERCEDES BENZ / 45LF - 170 DAF 45, 120 - 45.130 - 45.150 - 45.160 - 50.130 - LEYLAND DAF / RENAULT S120. 07 - S120.08 - 135 - 370 - MIDLUM 302 - 304 - 306 - 313 - 317 LEYLAND / 45LF, 150 - 45LF. 170 / MERCEDES VARIO LEICHT, 614 - 712 - 715 - 812 - 814 - 815

<b>PART NO.</b>	<b>TORQUE</b>	<b>POWER</b> (100 rpm)
17524127166	21 Kgm 206.01 Nm	26.8 Hp 20 Kw
<b>SPEED</b>	<b>RATIO</b>	<b>WEIGHT</b>
1000 rpm	1/0.8	13 KG
<b>MOUNTING</b>	<b>CONTROL</b>	<b>ROTATION</b>
Right - Side	Mechanical	Right - UNI

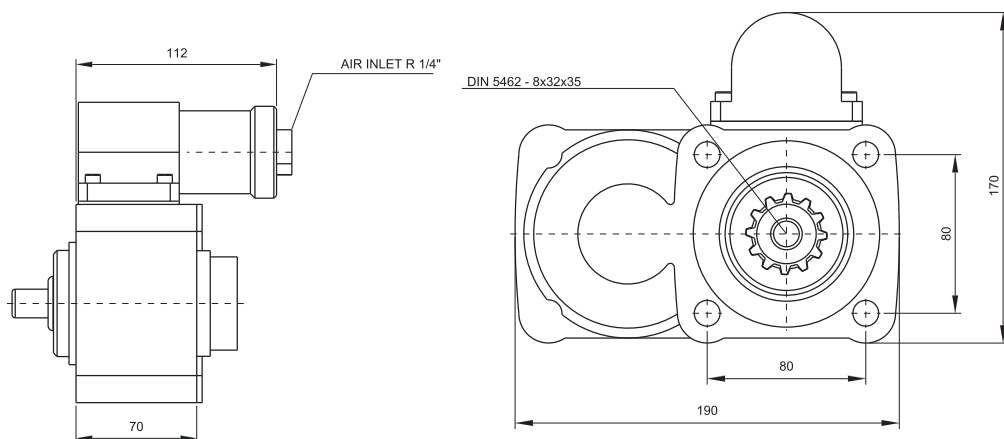
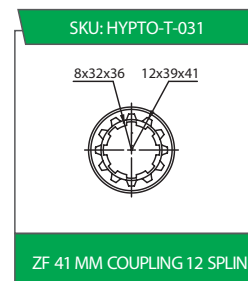
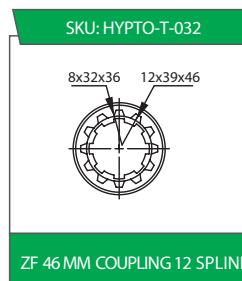
# POWER TAKE OFF (PTO)

## ZF Drop Box

SKU: HYPTO-T-032 / HYPTO-T-031



## COUPLING OPTIONS



### GENERAL DATA

#### MAIN GEARBOX

ZF16S251 - 221 - 151 - 150 - 130 - ZF S5 / AK / 65 - 120 - 111 - 110 - 92 - GP ZF S5 / AK / 65 - 90 - 80 - 70 - 66 - 65 - 55 - 50 - 42 - 36 - 35 - ZF - ECOMIT 95 75 - 95 109 - 16S 109 - ZF NEW ECOSPLIT 16S1620TD - 16S1820TO - 18S1820TO - 16S2220TD - 16S220TO - 16S2520TO - 16S2023TDL

#### TRUCK MODELS USED

MAN / MERCEDES / BMC PROFESYONEL / FORD CARGO / CHRYSLER HINO / DODGE / FARGO / IVECO / DAF / DAEWOO / RENAULT

<b>PART NO.</b>	<b>TORQUE</b>	<b>POWER (100 rpm)</b>
17531138399	26.5 Kgm 260 Nm	24.5 Hp 18.3 Kw
<b>SPEED</b>	<b>RATIO</b>	<b>WEIGHT</b>
675 rpm	1/1.2	7.5 KG
<b>MOUNTING</b>	<b>CONTROL</b>	<b>ROTATION</b>
Rear	Pneumatic	Left - ISO



# CONTROL VALVES



# CONTENTS

<a href="#"><u>40 LT MONOBLOCK CONTROL VALVE</u></a>	<a href="#"><u>79</u></a>
<a href="#"><u>45 LT MONOBLOCK CONTROL VALVE</u></a>	<a href="#"><u>79</u></a>
<a href="#"><u>70 LT MONOBLOCK CONTROL VALVE</u></a>	<a href="#"><u>79</u></a>
<a href="#"><u>80 LT MONOBLOCK CONTROL VALVE</u></a>	<a href="#"><u>79</u></a>
<a href="#"><u>80 LT SELECTION CONTROL VALVE</u></a>	<a href="#"><u>80</u></a>
<a href="#"><u>100 LT SELECTION CONTROL VALVE</u></a>	<a href="#"><u>80</u></a>
<a href="#"><u>120 LT SELECTION CONTROL VALVE</u></a>	<a href="#"><u>81</u></a>
<a href="#"><u>150 LT SELECTION CONTROL VALVE</u></a>	<a href="#"><u>81</u></a>



# CONTROL VALVES

## 40 LT MONOBLOCK CONTROL VALVE



PRODUCT CODE	PRODUCT NAME	DIMENSION	LT
65104001130	HYD-M-40-1P	3/8	40

PRODUCT CODE	PRODUCT NAME	DIMENSION	LT
65104001140	HYD-M-40-1P	1/2	40

## 45 LT MONOBLOCK CONTROL VALVE



PRODUCT CODE	PRODUCT NAME	DIMENSION	LT
65104501130	HYD-M-45-1P	3/8	45
65104502130	HYD-M-45-2P	3/8	45
65104503130	HYD-M-45-3P	3/8	45
65104504130	HYD-M-45-4P	3/8	45
65104505130	HYD-M-45-5P	3/8	45
65104506130	HYD-M-45-6P	3/8	45
65104507130	HYD-M-45-7P	3/8	45

PRODUCT CODE	PRODUCT NAME	DIMENSION	LT
65104501040	HYD-M-45-1P	1/2	45
65104502040	HYD-M-45-2P	1/2	45
65104503040	HYD-M-45-3P	1/2	45
65104504040	HYD-M-45-4P	1/2	45
65104505040	HYD-M-45-5P	1/2	45
65104506040	HYD-M-45-6P	1/2	45
65104507040	HYD-M-45-6P	1/2	45

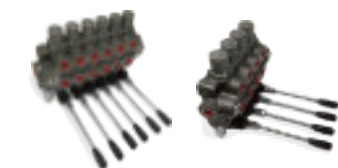
## 70 LT MONOBLOCK CONTROL VALVE



PRODUCT CODE	PRODUCT NAME	DIMENSION	LT
65107001050	HYD-M-70-1P	3/4	70
65107002050	HYD-M-70-2P	3/4	70
65107003050	HYD-M-70-3P	3/4	70
65107004050	HYD-M-70-4P	3/4	70
65107005050	HYD-M-70-5P	3/4	70
65107006050	HYD-M-70-6P	3/4	70

PRODUCT CODE	PRODUCT NAME	DIMENSION	LT
65107001040	HYD-M-70-1P	1/2	70
65107002040	HYD-M-70-2P	1/2	70
65107003040	HYD-M-70-3P	1/2	70
65107004040	HYD-M-70-4P	1/2	70
65107005040	HYD-M-70-5P	1/2	70
65107006040	HYD-M-70-6P	1/2	70

## 80 LT MONOBLOCK CONTROL VALVE



PRODUCT CODE	PRODUCT NAME	DIMENSION	LT
65108001050	HYD-M-80-1P	3/4	80
65108002050	HYD-M-80-2P	3/4	80
65108003050	HYD-M-80-3P	3/4	80
65108004050	HYD-M-80-4P	3/4	80
65108005050	HYD-M-80-5P	3/4	80
65108006050	HYD-M-80-6P	3/4	80

PRODUCT CODE	PRODUCT NAME	DIMENSION	LT
65108001040	HYD-M-80-1P	1/2	80
65108002040	HYD-M-80-2P	1/2	80
65108003040	HYD-M-80-3P	1/2	80
65108004040	HYD-M-80-4P	1/2	80
65108005040	HYD-M-80-5P	1/2	80
65108006040	HYD-M-80-6P	1/2	80

## 80 LT SELECTION CONTROL VALVE



PRODUCT CODE	PRODUCT NAME	DIMENSION	LT
65208001050	HYD-PD-80-1P	3/4	80
65208002050	HYD-PD-80-2P	3/4	80
65208003050	HYD-PD-80-3P	3/4	80
65208004050	HYD-PD-80-4P	3/4	80
65208005050	HYD-PD-80-5P	3/4	80
65208006050	HYD-PD-80-6P	3/4	80
65208007050	HYD-PD-80-7P	3/4	80
65208008050	HYD-PD-80-8P	3/4	80
65208009050	HYD-PD-80-9P	3/4	80
65208010050	HYD-PD-80-10P	3/4	80
65208011050	HYD-PD-80-11P	3/4	80
65208012050	HYD-PD-80-12P	3/4	80

PRODUCT CODE	PRODUCT NAME	DIMENSION	LT
65208001040	HYD-PD-80-1P	1/2	80
65208002040	HYD-PD-80-2P	1/2	80
65208003040	HYD-PD-80-3P	1/2	80
65208004040	HYD-PD-80-4P	1/2	80
65208005040	HYD-PD-80-5P	1/2	80
65208006040	HYD-PD-80-6P	1/2	80
65208007040	HYD-PD-80-7P	1/2	80
65208008040	HYD-PD-80-8P	1/2	80
65208009040	HYD-PD-80-9P	1/2	80
65208010040	HYD-PD-80-10P	1/2	80
65208011040	HYD-PD-80-11P	1/2	80
65208012040	HYD-PD-80-12P	1/2	80

## 100 LT SELECTION CONTROL VALVE



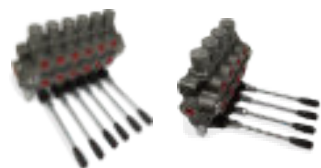
PRODUCT CODE	PRODUCT NAME	DIMENSION	LT
65210001050	HYD-PD-100-1P	3/4	100
65210002050	HYD-PD-100-2P	3/4	100
65210003050	HYD-PD-100-3P	3/4	100
65210004050	HYD-PD-100-4P	3/4	100
65210005050	HYD-PD-100-5P	3/4	100
65210006050	HYD-PD-100-6P	3/4	100
65210007050	HYD-PD-100-7P	3/4	100
65210008050	HYD-PD-100-8P	3/4	100
65210009050	HYD-PD-100-9P	3/4	100
65210010050	HYD-PD-100-10P	3/4	100
65210011050	HYD-PD-100-11P	3/4	100
65210012050	HYD-PD-100-12P	3/4	100

PRODUCT CODE	PRODUCT NAME	DIMENSION	LT
6521001040	HYD-PD-100-1P	1/2	100
6521002040	HYD-PD-100-2P	1/2	100
6521003040	HYD-PD-100-3P	1/2	100
6521004040	HYD-PD-100-4P	1/2	100
6521005040	HYD-PD-100-5P	1/2	100
6521006040	HYD-PD-100-6P	1/2	100
6521007040	HYD-PD-100-7P	1/2	100
6521008040	HYD-PD-100-8P	1/2	100
6521009040	HYD-PD-100-9P	1/2	100
65210010040	HYD-PD-100-10P	1/2	100
65210011040	HYD-PD-100-11P	1/2	100
65210012040	HYD-PD-100-12P	1/2	100



## CONTROL VALVES

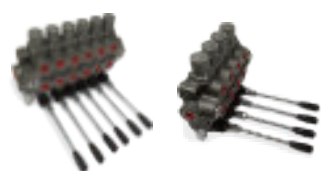
### 120 LT SELECTION CONTROL VALVE



PRODUCT CODE	PRODUCT NAME	DIMENSION	LT
65212001050	HYD-PD-120-1P	3/4	120
65212002050	HYD-PD-120-2P	3/4	120
65212003050	HYD-PD-120-3P	3/4	120
65212004050	HYD-PD-120-4P	3/4	120
65212005050	HYD-PD-120-5P	3/4	120
65212006050	HYD-PD-120-6P	3/4	120
65212007050	HYD-PD-120-7P	3/4	120
65212008050	HYD-PD-120-8P	3/4	120
65212009050	HYD-PD-120-9P	3/4	120
65212010050	HYD-PD-120-10P	3/4	120
65212011050	HYD-PD-120-11P	3/4	120
65212012050	HYD-PD-120-12P	3/4	120

PRODUCT CODE	PRODUCT NAME	DIMENSION	LT
65212001040	HYD-PD-120-1P	1/2	120
65212002040	HYD-PD-120-2P	1/2	120
65212003040	HYD-PD-120-3P	1/2	120
65212004040	HYD-PD-120-4P	1/2	120
65212005040	HYD-PD-120-5P	1/2	120
65212006040	HYD-PD-120-6P	1/2	120
65212007040	HYD-PD-120-7P	1/2	120
65212008040	HYD-PD-120-8P	1/2	120
65212009040	HYD-PD-120-9P	1/2	120
65212010040	HYD-PD-120-10P	1/2	120
65212011040	HYD-PD-120-11P	1/2	120
65212012040	HYD-PD-120-12P	1/2	120

### 150 LT SELECTION CONTROL VALVE



PRODUCT CODE	PRODUCT NAME	DIMENSION	LT
65215001050	HYD-PD-150-1P	3/4"	150
65215002050	HYD-PD-150-2P	3/4"	150
65215003050	HYD-PD-150-3P	3/4"	150
65215004050	HYD-PD-150-4P	3/4"	150
65215005050	HYD-PD-150-5P	3/4"	150
65215006050	HYD-PD-150-6P	3/4"	150
65215007050	HYD-PD-150-7P	3/4"	150
65215008050	HYD-PD-150-8P	3/4"	150
65215009050	HYD-PD-150-9P	3/4"	150
65215010050	HYD-PD-150-10P	3/4"	150
65215011050	HYD-PD-150-11P	3/4"	150
65215012050	HYD-PD-150-12P	3/4"	150

PRODUCT CODE	PRODUCT NAME	DIMENSION	LT
65215001060	HYD-PD-150-1P	1"	150
65215002060	HYD-PD-150-2P	1"	150
65215003060	HYD-PD-150-3P	1"	150
65215004060	HYD-PD-150-4P	1"	150
65215005060	HYD-PD-150-5P	1"	150
65215006060	HYD-PD-150-6P	1"	150
65215007060	HYD-PD-150-7P	1"	150
65215008060	HYD-PD-150-8P	1"	150
65215009060	HYD-PD-150-9P	1"	150
65215010060	HYD-PD-150-10P	1"	150
65215011060	HYD-PD-150-11P	1"	150
65215012060	HYD-PD-150-12P	1"	150



# PNEUMATIC CONTROLS



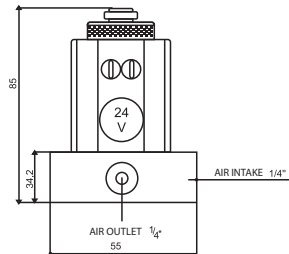
<a href="#">Hydraulic PTO Switch (Single) Inc 24V Solenoid Valve</a>	<a href="#">84</a>
<a href="#">Hydraulic PTO Switch (Double) Inc 24V Solenoid Valves</a>	<a href="#">84</a>
<a href="#">Hydraulic PTO Switch (Triple) Inc 24V Solenoid Valves</a>	<a href="#">85</a>
<a href="#">Hydraulic PTO Switch (Quadruple) Inc 24V Solenoid Valves</a>	<a href="#">85</a>
<a href="#">PTO Pull/Push External Control Air Switch Valve Dash Mounted</a>	<a href="#">86</a>
<a href="#">PTO 3 Position Joystick Internal Control Air Switch</a>	<a href="#">86</a>



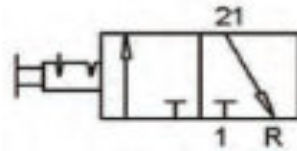
**PTO AIR SWITCH PNEUMATIC  
1 WAY 1/8" BSP**



**CODE 67011002000**



**CODE 63021000100**



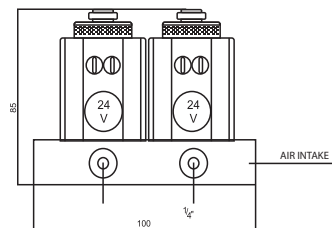
Permissible Medium	10 Bar
Current Type	6 Bar
Nominal Current	
Temperature	-40, +80 C
Permissible Medium	24 Volt
Nominal Current	650 mA
Current Type	DC
Weight	0.2 kg

Air Inlet	G 1/8
Air Outlet	G 1/8
Max Pressure	10 Bar
Temperature	-40, +80 C
Permissible Medium	Air
Connection Type	Optional
Weight	0.100 kg

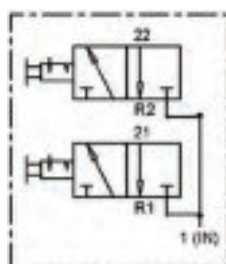
**PTO AIR SWITCH PNEUMATIC  
2 WAY 1/8" BSP**



**CODE 67012002000**



**CODE 63022000100**



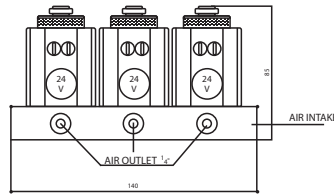
Permissible Medium	10 Bar
Current Type	DC
Nominal Current	
Temperature	-40, +80 C
Permissible Medium	24 Volt
Nominal Current	650 mA
Current Type	DC
Weight	0.3 kg

Air Inlet	G 1/8
Air Outlet	G 1/8
Max Pressure	10 Bar
Temperature	-40, +80 C
Permissible Medium	Air
Connection Type	Optional
Weight	0.178 kg

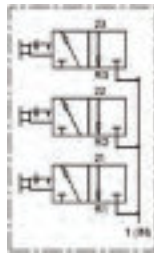
**PTO AIR SWITCH PNEUMATIC  
3 WAY 1/8" BSP**



**CODE 67013002000**



**CODE 63023000100**



Permissible Medium **10 Bar**

Current Type **DC**

Nominal Current

Temperature **-40, +80 C**

Permissible Medium **24 Volt**

Nominal Current **650 mA**

Current Type **DC**

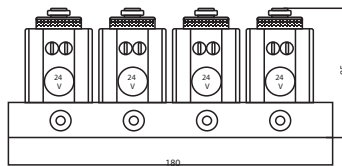
Weight **1.1 kg**

Air Inlet	G 1/8
Air Outlet	G 1/8
Max Pressure	10 Bar
Temperature	-40, +80 C
Permissible Medium	Air
Connection Type	Optional
Weight	0.230 kg

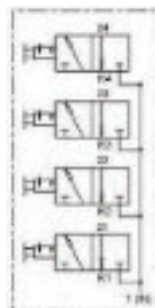
**PTO AIR SWITCH PNEUMATIC  
4 WAY 1/8" BSP**



**CODE 67014002000**



**CODE 63024000100**



Permissible Medium **10 Bar**

Current Type **DC**

Nominal Current

Temperature **-40, +80 C**

Permissible Medium **24 Volt**

Nominal Current **650 mA**

Current Type **DC**

Weight **1.5 kg**

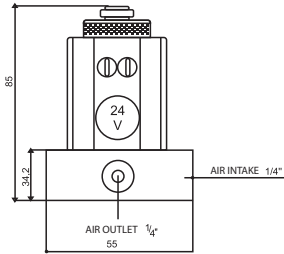
Air Inlet	G 1/8
Air Outlet	G 1/8
Max Pressure	10 Bar
Temperature	-40, +80 C
Permissible Medium	Air
Connection Type	Optional
Weight	0.330 kg

## PNEUMATIC CONTROL

### 24V SOLENOID VALVE 1 WAY PNEUMATIC 1/4" BSP (NC)



SKU: HYCON-T-014

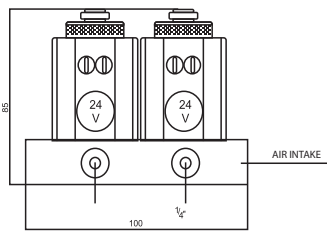


Permissible Medium	10 Bar
Current Type	DC
Nominal Current	650 mA
Temperature	-40, +80 C
Permissible Medium	24 Volt
Nominal Current	650 mA
Current Type	DC
Weight	0.2 kg

### 24V SOLENOID VALVE 2 WAY PNEUMATIC 1/4" BSP (NC)



SKU: HYCON-T-013

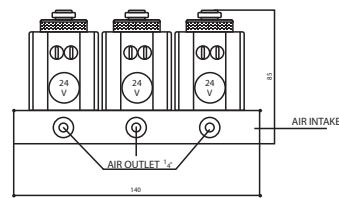


Permissible Medium	10 Bar
Current Type	DC
Nominal Current	650 mA
Temperature	-40, +80 C
Permissible Medium	24 Volt
Nominal Current	650 mA
Current Type	DC
Weight	0.3 kg

### 24V SOLENOID VALVE 3 WAY PNEUMATIC 1/4" BSP (NC)



SKU: HYCON-T-012

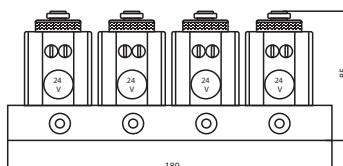


Permissible Medium	10 Bar
Current Type	DC
Nominal Current	650 mA
Temperature	-40, +80 C
Permissible Medium	24 Volt
Nominal Current	650 mA
Current Type	DC
Weight	1.1 kg

### 24V SOLENOID VALVE 4 WAY PNEUMATIC 1/4" BSP (NC)



SKU: HYCON-T-011



Permissible Medium	10 Bar
Current Type	DC
Nominal Current	650 mA
Temperature	-40, +80 C
Permissible Medium	24 Volt
Nominal Current	650 mA
Current Type	DC
Weight	1.5 kg

## PNEUMATIC CONTROL

### PTO PULL/PUSH EXTERNAL CONTROL AIR SWITCH VALVE DASH MOUNTED

SKU: HYCON-T-008



Designed for use with Skip Trucks,  
Refuse Trucks, Truck Mounted Cranes etc

### PTO 3 POSITION JOYSTICK INTERNAL CONTROL AIR SWITCH

SKU: HYCON-T-009



Designed for use with Tipper Trucks,  
Semi Tipping Trailers etc



# OIL TANKS





# CONTENTS

[ALUMINIUM SIDE MOUNT OIL TANK](#)

**89**

[ALUMINIUM REAR CAB OIL TANK BELTED](#)

**89**



## OIL TANKS

### ALUMINIUM SIDE MOUNT OIL TANK



CODE	SIZE
61604050402	40x50x40-65 LT
61604050504	40x50x50-80 LT
61604051006	40x50x60-100 LT
61608120409	56x64x40-120 LT
61608120514	56x64x50-160 LT
61608121018	56x64x60-190 LT
61611140413	62x67x40-150 LT
61611140517	62x67x50-180 LT
61611141022	62x67x60-220 LT
61617170416	71x71x40-170 LT
61617170523	71x71x50-225 LT
61617171027	71x71x60-270 LT
61713031309	65x32x65-120 LT
61713032516	65x32x90-170 LT
61713033120	65x32x110-205 LT
61713033425	65x32x125-235 LT
61704052008	40x50x79-115 LT
61704052410	40x50x89-130 LT
61704052813	40x50x98-150 LT
61704053116	40x50x110-170 LT
61704053424	40x50x125-230 LT

### ALUMINIUM REAR CAB OIL TANK BELTED



CODE	SIZE
61803131309	32x65x65-120 LT
61804052011	40x50x79-135 LT
61804052413	40x50x89-150 LT
61803132514	32x65x90-160 LT
61804052815	40x50x98-165 LT
61803133118	32x65x110-190 LT
61804053118	40x50x110-190 LT
61804053422	40x50x125-220 LT
61803133424	32x65x125-230 LT









**Tel: 01262 601600**

[www.mwhydraulics.co.uk](http://www.mwhydraulics.co.uk) | [sales@mwtruckparts.co.uk](mailto:sales@mwtruckparts.co.uk)